



## SAFETY AND INSTALLATION INSTRUCTIONS

Model:

### **2 X 26W Recessed Downlight with Drop Glass PL226DG**

These instructions are provided as a guideline to assist you.  
**PLEASE READ THESE INSTRUCTIONS BEFORE INSTALLING YOUR NEW FITTING.**  
**PLEASE RETAIN FOR FUTURE REFERENCE**



**Pack Contents**  
Recessed fitting  
Glass diffuser  
Fixing pack

# General Information and Safety Instructions

## Read this first

Check the pack and make sure you have all of the parts listed on the front of this booklet. If not, contact the outlet where you bought this product.

This product contains glass, care must be taken when assembling, fitting or handling to prevent personal injury or damage to the product.

This light fitting must be installed by a competent person in accordance with the Building Regulations making reference to the current edition of the IEE Wiring Regulations (BS7671). The Building Regulations may be obtained from OPSI (Office for Public Sector Information) or the department of Communities and Local Government and viewed and downloaded from [www.communities.gov.uk](http://www.communities.gov.uk) following the link for Building Regulations.

As the buyer, installer and/or user of this product it is your own responsibility to ensure that this fitting is fit for the purpose for which you have intended it. Eterna Lighting cannot accept any liability for loss, damage or premature failure resulting from inappropriate use.

If in any doubt, consult a qualified electrician.

Switch off the mains before commencing installation and remove the appropriate circuit fuse.

When working at heights, please use a suitable platform.

Disconnect from the electrical supply before flash or high voltage testing.

Suitable for indoor use only.

This product is suitable for installation on surfaces with normal flammability (indicated by the "F" in a triangle) e.g. wood, plasterboard, masonry. It is not suitable for use on highly flammable surfaces (e.g. polystyrene, textiles).

Before making fixing hole(s), check that there are no obstructions hidden beneath the mounting surface such as pipes or cables.

Do not cover the fitting with any insulating materials.

Do not attach to surfaces which are damp, freshly painted or otherwise electrically conductive (e.g. metallic surfaces).

If the location of your new fitting requires the provision of a new electrical supply, the supply must conform with the requirements of the Building Regulations making reference to the current edition of the IEE Wiring Regulations (BS7671).

This product is designed for permanent connection to fixed wiring: this should be either a suitable lighting circuit (protected with a 5 or 6 Amp MCB or fuse) or a fused spur (with a 3 Amp fuse) via a fused connection unit. We recommend that the supply incorporates a switch for ease of operation.

Make connections to the electrical supply in accordance with the following code:

Live - Brown or Red

Neutral - Blue or Black

Earth - Green and Yellow

When making connections, ensure that the terminals are tightened securely and that no strands of wire protrude. Check that the terminals are tightened onto the bared conductors and not onto any insulation. Wrap loose terminal blocks well with insulating tape.

This product must be connected to Earth.

**IMPORTANT**— Always switch off before changing the lamp.

You are advised at every stage of your installation to double-check any electrical connections you have made. After you have completed your installation there are electrical tests that should be carried out: these tests are specified in the Wiring Regulations (BS7671) referred to in the Building Regulations. If in doubt, consult a qualified electrician.

## Cleaning:

Clean this light fitting only with a soft dry cloth

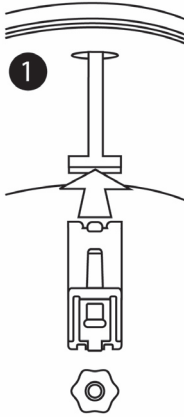
Disconnect the power and clean the exterior only of this fitting with a moist (not wet) cloth.

The glass may be removed and washed in a mild detergent solution. Make sure it is completely dry before putting it back on your light fitting.

Do not use any chemical or abrasive cleaners.

# Installation:

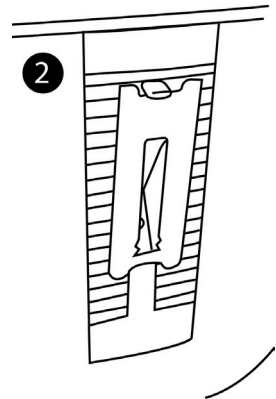
1. Choose the location for your fitting giving consideration to all of the points above.
2. Cut a round hole of 166mm diameter.



3. Fit the ceiling fixing clips to the side of the fitting—see fig. 1.
4. Remove the lid of the black gear case.
5. Remove one of the cable entry knock-outs and fit a cable gland or grommet (not supplied).
6. Thread your mains supply cable in through your gland or grommet and make connections to your electrical supply according to the colour code opposite and observing the polarity markings on the inside of the gear case.
7. Replace the top of the gear case and replace the two screws. Take care not to overtighten.
8. Adjust the gear support strap so that the weight of the gear rests on it once in position in your ceiling.

9. Pass the gear case through the hole in the ceiling and rest inside the ceiling void.
10. Push the body of the fitting up into the ceiling ensuring that the retaining clips spring correctly into position. If not, hold the fitting in place against the ceiling and draw the clips downwards from the inside of the fitting until they are tight and the fitting is held securely.
11. Ensure that the cut-out is positioned in line with the lampholders and tighten the nut in the centre.
12. Insert lamps according to the lamp type and Wattage marked next to the lampholders and on the back of this leaflet.
13. Dropped glass diffuser: remove the slotted screws from the three posts.
14. Locate the glass on the posts and secure in place using the 3 screws. Tighten the screws sufficiently to retain the glass securely but take care not to over-tighten.
15. Restore the power and switch on.

Plugs are supplied so that if you prefer not to fit the drop glass, you can press the plugs into the holes left once the glass supports have been removed



## Lamp replacement:

1. Switch off the electricity at the mains.
2. Undo the three slotted screws and remove the glass.
3. Remove and replace lamp.
4. Replace the glass, tighten the screws sufficiently to retain the glass securely but take care not to over-tighten.
5. Restore the power and switch on.

## Replacement lamp type:

Wattage: 2 x 26W  
Supply Voltage: 240V  
Size / Type: 26W G24q-3 Double Turn D 4pin CFL

## Eventually, you may want to replace replace this light fitting:

When your light fitting comes to the end of its life or you choose to update or upgrade it by replacing it, please do not dispose of it with your normal household waste, please recycle where facilities exist. When you need to dispose of this fitting, check with your retailer or local authority for suitable options. New regulations require the recycling of Waste from Electrical and Electronic Equipment (European "WEEE Directive" effective August 2005—UK WEEE Regulations effective 2nd January 2007). Environment Agency Registered Producer: WEE/GA0248QZ



## If you experience problems:

If your light is defective or develops a fault, please return it to the place where you bought it. You can call our Helpline for advice. The Helpline will gladly give advice on any aspect of any Eterna Lighting product but may not be able to give specific instructions regarding individual installations.

## If in doubt, consult a qualified electrician.

## Help line:

**Tel: 01933 673 144 Fax: 01933 678 083 Email: [sales@eterna-lighting.co.uk](mailto:sales@eterna-lighting.co.uk)**

For answers to frequently asked questions (FAQs) and other information visit our web-site [www.eterna-lighting.co.uk](http://www.eterna-lighting.co.uk)

