

Premium
Outdoor
Fitting



Code	Colour	Version	Wattage	Colour Temp.	Lumens	Avg. Rated Life (Hrs)	IP / IK Rating	MOM / OPQ
Full Trim								
ALMFWHFUL	White	MW	18W	4200K	1400 lm	35,000 hrs	IP65 IK10	1 / 1
Eyelid Trim								
ALSTDWHEYE	White	Standard	18W	4200K	1300 lm	35,000 hrs	IP65 IK10	1 / 1
ALMFWHEYE	White	MW						
ALMF3WHEYE	White	MW + EM3						
Grill Trim								
ALSTDBKGRI	Black	Standard	18W	4200K	1400 lm	35,000 hrs	IP65 IK10	1 / 1
ALSTDWHGRI	White							
ALEM3WHGRI	White	EM3						
ALMFBKGRI	Black	MW						
ALMFWHGRI	White							
ALMF3BKGR	Black	MW + EM3						

ALUMINIUM LED WALL LIGHTS

Superior range of die-cast aluminium fittings offering multiple functions and trim options suitable for outdoor applications where performance, style and durability are required. Modern and robust design with options - perfect for superior leisure, hotels & outdoor applications

- Die-cast aluminium base and bezel
- Polycarbonate diffuser • Full circular/eyelid LED array
- Plug in connector between the terminal block and the gear tray. Terminal block is located on the base, allowing for easy wiring and the gear tray to be removed during installation
- Four 20mm cable entries
- Tamper-proof, captive, stainless steel allen key screws

LI-ION EMERGENCY VERSIONS:

- 3 hour maintained mode as standard which can also be configured for non-maintained operation
- Battery - Li-Ion 3.2V 1500mAh • Battery 1 year warranty - Replacement battery code: EB11

MULTI-FUNCTION MICROWAVE SENSOR VERSIONS:

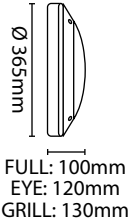
- Detection sensitivity adjustable - 10/50/75/100%
- Daylight sensor adjustable - 5/15/50 Lux/Disable
- Mounting height - maximum 6m
- Detection zone - maximum 16m diameter x 6m height
- Detection angle - 150° (wall mounted), 360° (ceiling mounted)

MULTI-FUNCTION MICROWAVE SENSOR WITH 3 INSTALLER OPTIONS:

- **Standard On/Off Mode:** operation at 100% light level then off after last presence detection. Operation on time can be set at 5 seconds/90 seconds/3 minutes/10 minutes
- **“Corridor Mode”:** operation at 100% light level after last presence detection which can be set at 5 seconds/90 seconds/3 minutes/10 minutes, then continuous operation at 10% light level
- **“Corridor” & Off Mode:** operation at 100% light level after last presence detection which can be set at 5 seconds/90 seconds/3 minutes/10 minutes, then operation at 10% light level which can be set at 30 seconds or 10 minutes, then off

SEE PAGE2
FOR QUICK INSTALL GUIDE

SEE PAGE3
FOR LED SPECIFICATIONS



5

Year Warranty



Emergency
Product



Li-Ion Battery



IP65



IK10



Microwave
Sensor



IES Files



Earthed



Hole
Knockouts

**STEP 1**

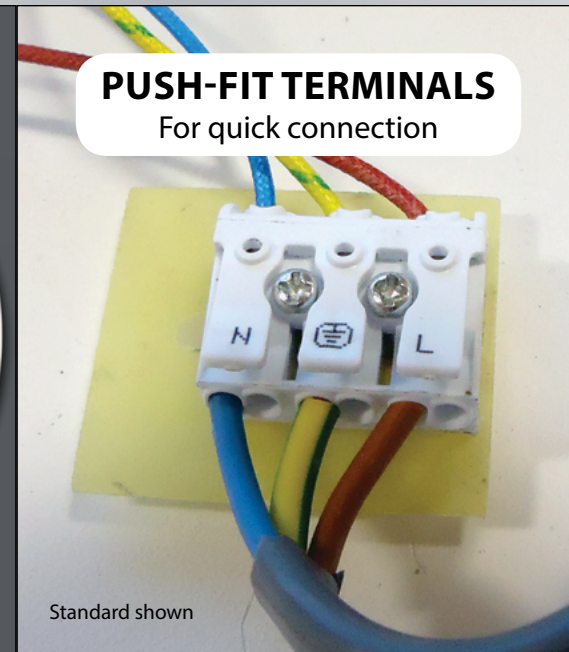
Unscrew with Allen key

**STEP 2**

Loosen screws and remove gear tray

**STEP 3**

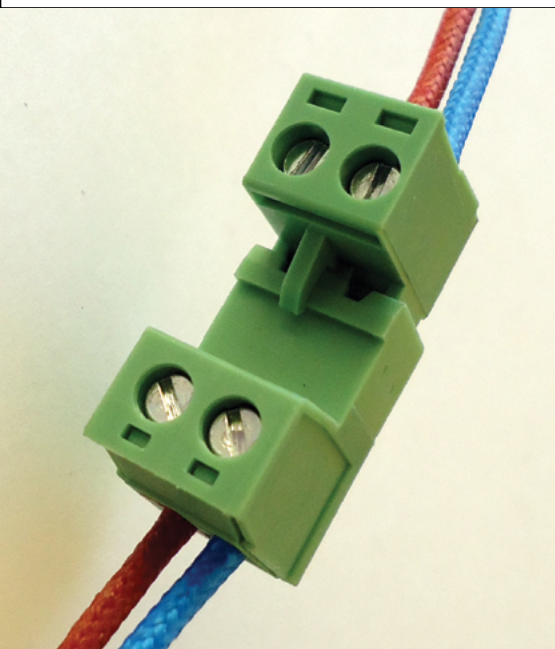
Fix base to mounting surface

**PUSH-FIT TERMINALS**

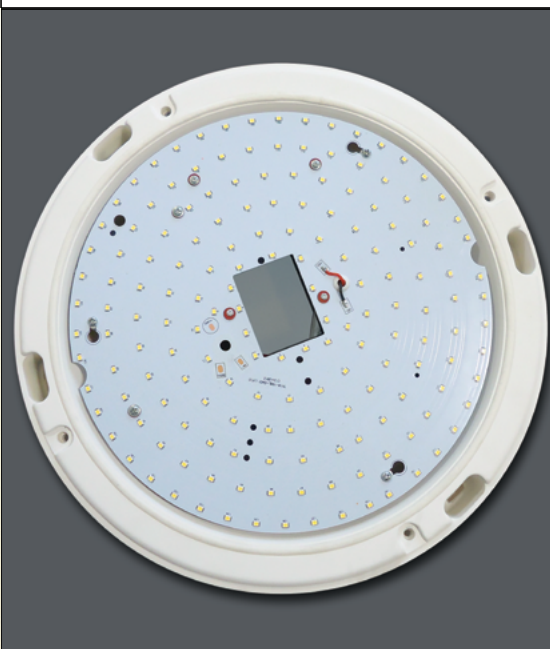
For quick connection

STEP 4

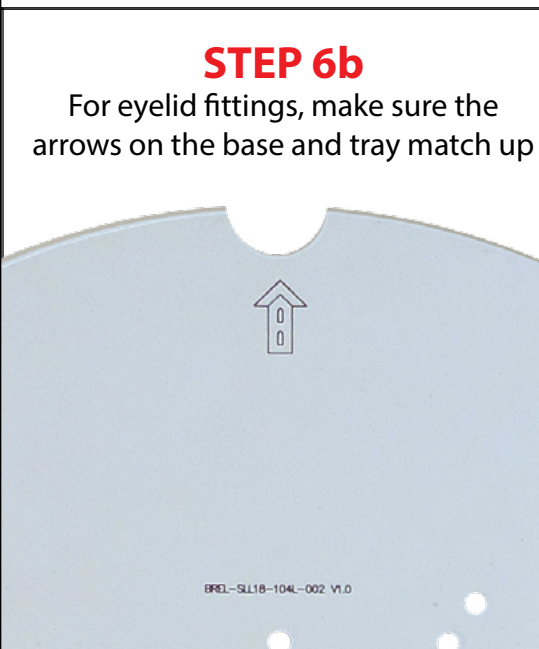
Connect mains supply

**STEP 5**

Connect plug between gear tray & base

**STEP 6a**

Fix and secure gear tray in place

**STEP 6b**

For eyelid fittings, make sure the arrows on the base and tray match up

**STEP 7**

Replace diffuser and trim

LED LAMP SPECIFICATIONS:	FULL / GRILL	EYELID
Luminaire lumens (diffuser)	1400 lm	1300 lm
Lumens from chip (no diffuser)	1900 lm	1750 lm
Useful lumens	1350 lm	1250 lm
Rated Wattage	18W	18W
Rated luminous flux	1350 lm	1250 lm
Nominal life time of the lamp	35,000 hrs	35,000 hrs
Colour temperature	4200K	4200K
Number of switching cycles before premature lamp failure	>15,000	>15,000
Warm-up time up to 60% of the full light output	Instant full light	Instant full light
Dimmable	No	No
Nominal beam angle	120°	120°
Rated power	18W	18W
Rated lamp lifetime	35,000 hrs	35,000 hrs
Lamp power factor	>0.9	>0.9
Lumen maintenance factor at end of nominal life	>0.7	>0.7
Starting time	<0.1s	<0.1s
Colour rendering	>80 Ra	>80 Ra
Colour consistency	Within 6 step Macadam ellipse	Within 6 step Macadam ellipse
Rated peak intensity	520cd	520cd
Rated beam angle	120°	120°
Voltage / Frequency	240V~50Hz	240V~50Hz
Not suitable for accent lighting		