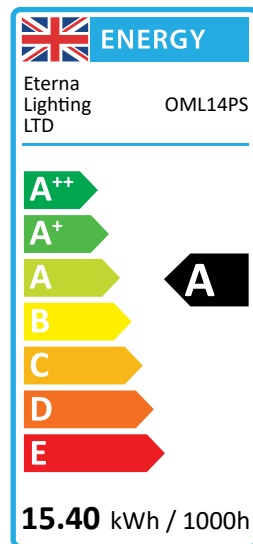


LAMP SPECIFICATIONS:	
Nominal Wattage	14W
Rated Wattage	14W
Average lifetime hours	18,000 hrs
Nominal useful luminous flux	<b>1204 lm</b>
Rated luminous flux	1204 lm
Luminous efficacy (lm/W) in HF operation	86
Rated lamp Lumen maintenance	2000hrs: 95% 4000 hrs: 92% 6000 hrs: 91% 8000 hrs: 90% 16000 hrs: 90%
Rated survival factors	2000hrs: 99% 4000 hrs: 97% 6000 hrs: 94% 8000 hrs: 92% 16000 hrs: 90%
Lamp dimensions (mm)	549mm
Cap type	G5
Lamp Mercury content to an accuracy of 0.1mg	≤2.5mg
Colour rendering index Ra	85
Colour temperature	3000K
Ambient temperature required to achieve maximum luminous flux	25°C
Dimmable	No



#### EVENTUALLY, YOU MAY WANT TO REPLACE THIS PRODUCT:

Regulations require the recycling of Waste from Electrical and Electronic Equipment (European "WEEE Directive" effective August 2005—UK WEEE Regulations effective 2nd January 2007). Environment Agency Registered Producer: WEE/ GA0248QZ.

WHEN YOUR PRODUCT COMES TO THE END OF ITS LIFE OR YOU CHOOSE TO REPLACE IT, PLEASE RECYCLE IT WHERE FACILITIES EXIST - DO NOT DISPOSE WITH HOUSEHOLD WASTE.

#### CLEANING:

Clean this light fitting only with a soft dry cloth.

The diffuser may be removed and washed in a mild detergent solution and ensure the diffuser is completely dry before putting them back on your light fitting.

Do not use any chemical or abrasive cleaners.

#### IF YOU EXPERIENCE PROBLEMS:

If you believe your product is defective, please return it to the place where you bought it. Our Technical Team will gladly advise on any Eterna Lighting product, but may not be able to give specific instructions regarding individual installations.



Email: [sales@eterna-lighting.co.uk](mailto:sales@eterna-lighting.co.uk) / [technical@eterna-lighting.co.uk](mailto:technical@eterna-lighting.co.uk)

Visit our website: [www.eterna-lighting.co.uk](http://www.eterna-lighting.co.uk)

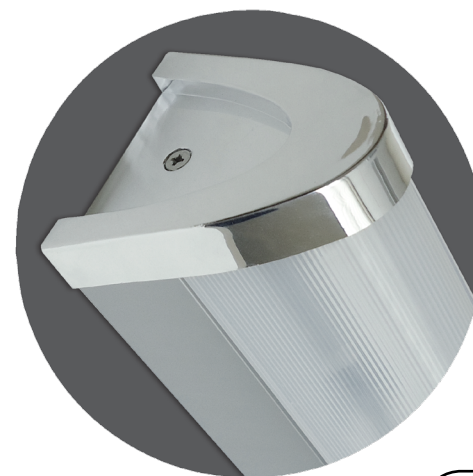
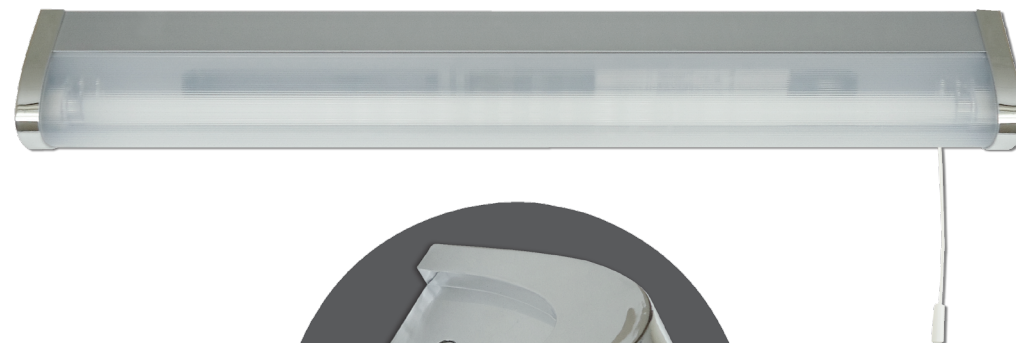
Made in China

Issue 0521

 **Eterna**  
Everyday Lighting For Professionals

## INSTALLATION INSTRUCTIONS

A guide for qualified electricians



**Pack contents:**  
1 x Fitting  
1 x 14W G5 T5 549mm tube

Model:

**OML14PS**

**Low Energy Over Mirror Light With Pull Switch**

These instructions are provided as a guideline to assist you.

**PLEASE READ THESE INSTRUCTIONS BEFORE INSTALLATION  
AND RETAIN FOR FUTURE REFERENCE**

## READ THIS FIRST:

Check the pack and make sure you have all of the parts listed on the front of this booklet. If not, contact the outlet where you bought this product.

This product contains glass, care must be taken when assembling, fitting or handling to prevent personal injury or damage to the product.

This product must be installed by a competent person in accordance with the current building and IEE wiring regulations.

As the buyer, installer and/or user of this product it is your own responsibility to ensure that this fitting is fit for the purpose for which you have intended it. Eterna Lighting cannot accept any liability for loss, damage or premature failure resulting from inappropriate use.

This product is designed and constructed according to the principles of the appropriate British Standard and is intended for normal domestic service. Using this fitting in any other environments may result in a shortened working life, for example where there is prolonged periods of use or higher than normal ambient temperatures such as lighting public or shared spaces or in care facilities.

Switch off the mains before commencing installation and remove the appropriate circuit fuse or lock off MCB.

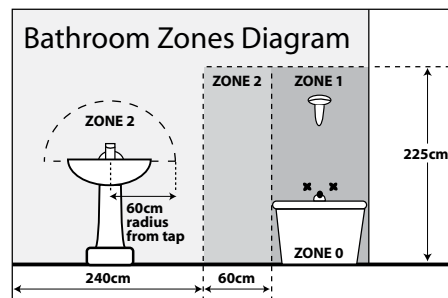
The lamps (bulbs/tubes), supplied with this fitting are consumable parts and therefore may be outside of any warranty offered.

Switch off the mains before commencing installation and remove the appropriate circuit fuse.

Disconnect the fitting from the electrical supply before flash or high voltage testing.

This unit is suitable for indoor use only.

This product is suitable for use in living areas, and Bathroom Zones 2 and outside (safe) zone only (see diagram below and current IEE Wiring Regulations for details). It is not suitable for Bathroom Zones 0 and 1 or other areas where contact with moisture is likely. If being fitted in a bathroom a 30mA RCD must be used.



This product is suitable for installation on surfaces with normal flammability e.g. wood, plasterboard and masonry. It is not suitable for use on highly flammable surfaces (e.g. polystyrene, textiles).

Before making fixing hole(s), check that there are no obstructions hidden beneath the mounting surface such as pipes or cables.

The chosen location of your new fitting should allow for the product to be securely mounted and safely connected to the mains supply (lighting circuit).

Do not attach to surfaces which are damp, freshly painted or otherwise electrically conductive (e.g. metallic surfaces).

This product is designed for permanent connection to fixed wiring: this should be either a suitable lighting circuit (protected with a 5 or 6 Amp MCB or fuse) or a fused spur (with a 3 Amp fuse) via a fused connection unit.

Make connections to the electrical supply in accordance with the following code:

Live - Brown or Red  
Neutral - Blue or Black  
Earth - Green and Yellow

When making connections, ensure that the terminals are tightened securely and that no strands of wire protrude. Check that the terminals are tightened onto the bared conductors and not onto any insulation. Wrap loose terminal blocks well with insulating tape.

This product must be connected to earth termination.

You are advised at every stage of your installation to double-check any electrical connections you have made. After you have completed your installation there are electrical tests that should be carried out, these tests are specified in the current IEE wiring and building regulations.

## INSTALLATION:

Choose the location of your new fitting according to the conditions listed above.

- 01) Undo the screws in the end caps and lift the end caps off the fitting taking care not to lose the screws.
- 02) Lift off the diffuser from the front of the fitting.
- 03) Rotate and remove the fluorescent tube.
- 04) Using the body of the fitting as a template, mark the positions of the fixing holes on your mounting surface.
- 05) Make fixing holes and insert fixing plugs etc. according to the type of fixings you have selected to secure the fitting in place.
- 06) Pierce the rubber grommet in the cable entry on the back of the fitting using a sharp implement. Make sure the hole is not too large as it must make a tight seal around the incoming mains cable to preserve the ingress protection of the fitting.
- 07) Thread the incoming mains cable through the hole you have just made in the grommet and offer the body of the fitting up to your mounting surface.
- 08) Secure the fitting in place using the fixings you have selected (not supplied).
- 09) Make the electrical connections according to the colour code above. Ensure that any extra cable is accommodated inside the body of the fitting or is pushed back into the wall cavity if possible.
- 10) Fit the fluorescent tube back into the fitting ensuring that the pins are correctly located in the lampholders.
- 11) Gently press the diffuser back into position making sure that it has correctly located in the groove along the top and bottom of the body.
- 12) Re-fit the polished end caps securing each in place with the screw provided.
- 13) Restore the mains power and switch on using the pull cord.

## LAMP REPLACEMENT:

- 01) Switch off the electricity at the mains.
- 02) Undo the screws at each end of the fitting and lift off the polished end caps.
- 03) Lift off the diffuser.
- 04) Twist to remove and replace lamp.
- 05) Replace diffuser; make sure that it is correctly located in the grooves at the top and bottom of the body.
- 06) Replace the polished end caps and secure using the screws provided.
- 07) Restore the power and switch on.

## REPLACEMENT LAMP TYPE:

Requires 1 x 14W G5 T5 549mm fluorescent tube 3000K (included).

Fitting is rated at 14W max.