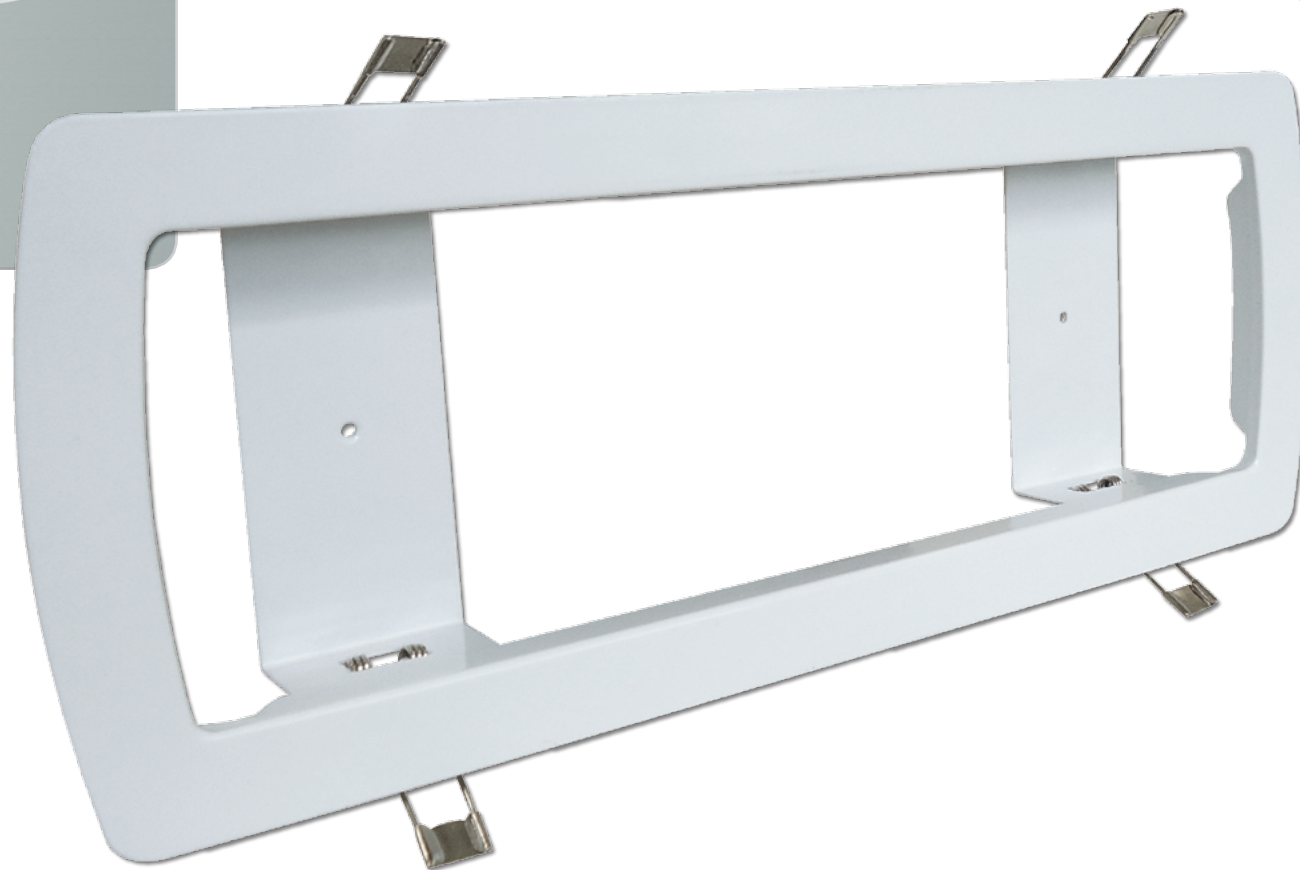
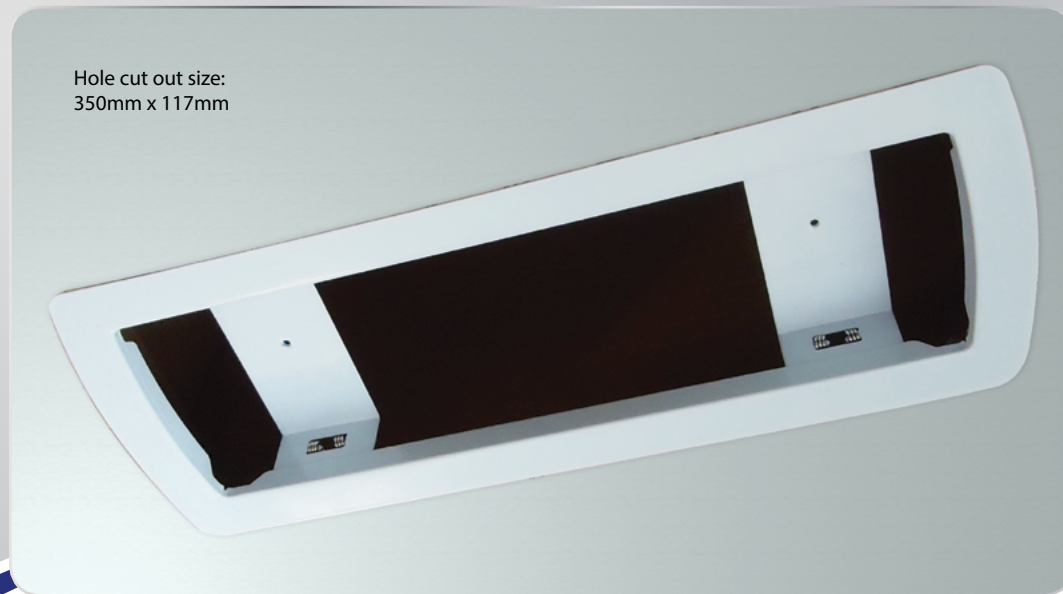


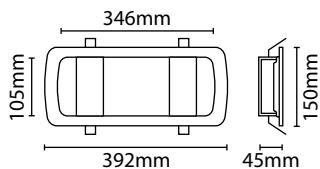
Hole cut out size:  
350mm x 117mm



**SEMI-RECESSED EMERGENCY BULKHEAD WHITE FRAME**

- For use with emergency bulkheads - see EMLED3 range
- Pressed steel construction
- Spring retaining clips
- Semi recessed fixing: allows a more discreet installation option
- Hole cut out size: 350mm x 117mm

• M.O.M: 1 / O.P.Q: 12



Code	Colour	IP Rating
BULKFRAME	White	IP20