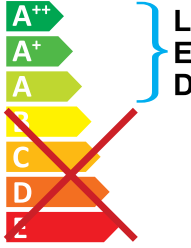


This luminaire contains built-in LED lamps.



The lamps cannot be changed in the luminaire.

Eterna ELEDWP5SIN/TWI 874/2012

LED LAMP SPECIFICATIONS:	SINGLE	TWIN
Luminaire lumens (with diffuser)	3000 lm	4000 lm
Lumens from chip (no diffuser)	3800 lm	4800 lm
Useful lumens	2850 lm	3800 lm
Rated Wattage	30W	48W
Rated luminous flux	2850 lm	3800 lm
Nominal life time of the lamp	30,000 hrs	30,000 hrs
Colour temperature	4000K	4000K
Number of switching cycles before premature lamp failure	>15,000	>15,000
Warm-up time up to 60% of the full light output	Instant full light	Instant full light
Dimmable	No	No
LED array dimensions (L/W)	1455 x 12mm	2x 1455 x 12mm
Nominal beam angle	120°	120°
Rated power	30W	48W
Rated lamp lifetime	30,000 hrs	30,000 hrs
Lamp power factor	>0.9	>0.9
Lumen maintenance factor at end of nominal life	70%	70%
Starting time	<0.5	<0.5
Colour rendering	>80	>80
Colour consistency	Within a six step Macadam ellipse	Within a six step Macadam ellipse
Rated peak intensity	825cd	1319cd
Rated beam angle	120°	120°
Voltage / Frequency	240V~50Hz	240V~50Hz
Not suitable for accent lighting		



Email: sales@eterna-lighting.co.uk / technical@eterna-lighting.co.uk

Visit our website: www.eterna-lighting.co.uk

Made in China

Issue 0816



INSTALLATION INSTRUCTIONS

A guide for qualified electricians

- PACK CONTENTS:**
LED weatherproof fitting
- FIXING KIT:**
2 x Hanging clips
2 x Hanging hooks
2 x IP65 glands (one fitted)
4 x Wall plugs
4 x Fixing screws



Model: ELEDWP5SIN / ELEDWP5TWI

IP65 5ft LED Weatherproof Fittings

These instructions are provided as a guideline to assist you.

**PLEASE READ THESE INSTRUCTIONS BEFORE INSTALLATION
AND RETAIN FOR FUTURE REFERENCE**

READ THIS FIRST:

Check the pack and make sure you have all of the parts listed on the front of this booklet. If not, contact the outlet where you bought this product.

This product must be installed by a competent person in accordance with the current building and IEE wiring regulations.

As the buyer, installer and/or user of this product it is your own responsibility to ensure that this fitting is fit for the purpose for which you have intended it. Eterna Lighting cannot accept any liability for loss, damage or premature failure resulting from inappropriate use.

This product is designed and constructed according to the principles of the appropriate British Standard and is intended for normal service. Using this fitting in any other environments may result in a shortened working life, for example where there is prolonged periods of use or higher than normal ambient temperatures.

Switch off the mains before commencing installation and remove the appropriate circuit fuse or lock off MCB.

Disconnect from the electrical supply before flash or high voltage testing.

Do not connect to a circuit which also has inductive loads connected; switching of inductive loads will generate spikes which may damage electronic components within your driver / dimmer.

This unit is suitable for outdoor use.

This product is designed for permanent connection to fixed wiring: this must be a suitable circuit (protected with the appropriate MCB or fuse).

Before making fixing hole(s), check that there are no obstructions hidden beneath the mounting surface such as pipes or cables.

Make sure that the fixings are strong enough to support the considerable weight of the fitting and hold it rigidly.

The chosen location of your new fitting should allow for the product to be securely mounted (e.g. to a ceiling joist) and safely connected to the mains supply (lighting circuit).

When making connections ensure that the terminals are tightened securely and that no strands of wire protrude. Check that the terminals are tightened onto the bared conductors and not onto any insulation.

This product is double insulated. Do not connect any part to Earth.

This product is not intended to be used by children and persons with sensory, physical and/or mental impairments that would prevent them from using it safely.

You are advised at every stage of your installation to double-check any electrical connections you have made. After you have completed your installation there are electrical tests that should be carried out, these tests are specified in the current IEE wiring and building regulations.

LAMP REPLACEMENT:

CAUTION, RISK OF ELECTRIC SHOCK!



The light source contained in this luminaire is designed to last the lifetime of the luminaire. It should only be replaced by the manufacturer or a similar qualified person.

EVENTUALLY, YOU MAY WANT TO REPLACE THIS PRODUCT:

Regulations require the recycling of Waste from Electrical and Electronic Equipment (European "WEEE Directive" effective August 2005—UK WEEE Regulations effective 2nd January 2007). Environment Agency Registered Producer: WEE/GA0248QZ.

WHEN YOUR PRODUCT COMES TO THE END OF ITS LIFE OR YOU CHOOSE TO REPLACE IT, PLEASE RECYCLE IT WHERE FACILITIES EXIST - DO NOT DISPOSE WITH HOUSEHOLD WASTE.

CLEANING:

Disconnect the power and clean the exterior only of this fitting with a moist (not wet) cloth.

Do not use any chemical or abrasive cleaners.

IF YOU EXPERIENCE PROBLEMS:

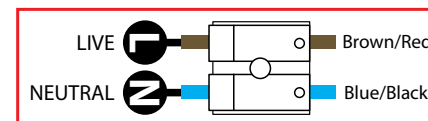
If you believe your product is defective, please return it to the place where you bought it. Our Technical Team will gladly advise on any Eterna Lighting product, but may not be able to give specific instructions regarding individual installations.

INSTALLATION:

1. Choose the location of your new fitting giving consideration to all of the conditions listed above and the position of the entry points for the mains supply cable.
2. If fixing direct to a mounting surface - using the luminaire and mounting brackets as a template, mark the location of the fixing holes on your mounting surface, drill holes and insert plugs supplied (if suitable) and fix the two brackets to the ceiling.
3. If suspending the luminaire - hanging clips are supplied to allow you to suspend the fitting from chains (not supplied). Fix the metal brackets to the rear housing and fit the triangle hooks. Ensure that the chain is strong enough to support the weight of the fitting and that the tops of the chains are fixed securely to the mounting surface.
4. Remove the back plate nearest to the fitted cable gland.
5. Thread the supply cable through the gland.

6. Make connections to the terminal block according to the following colour code:

Live – Brown or Red
Neutral – Blue or Black

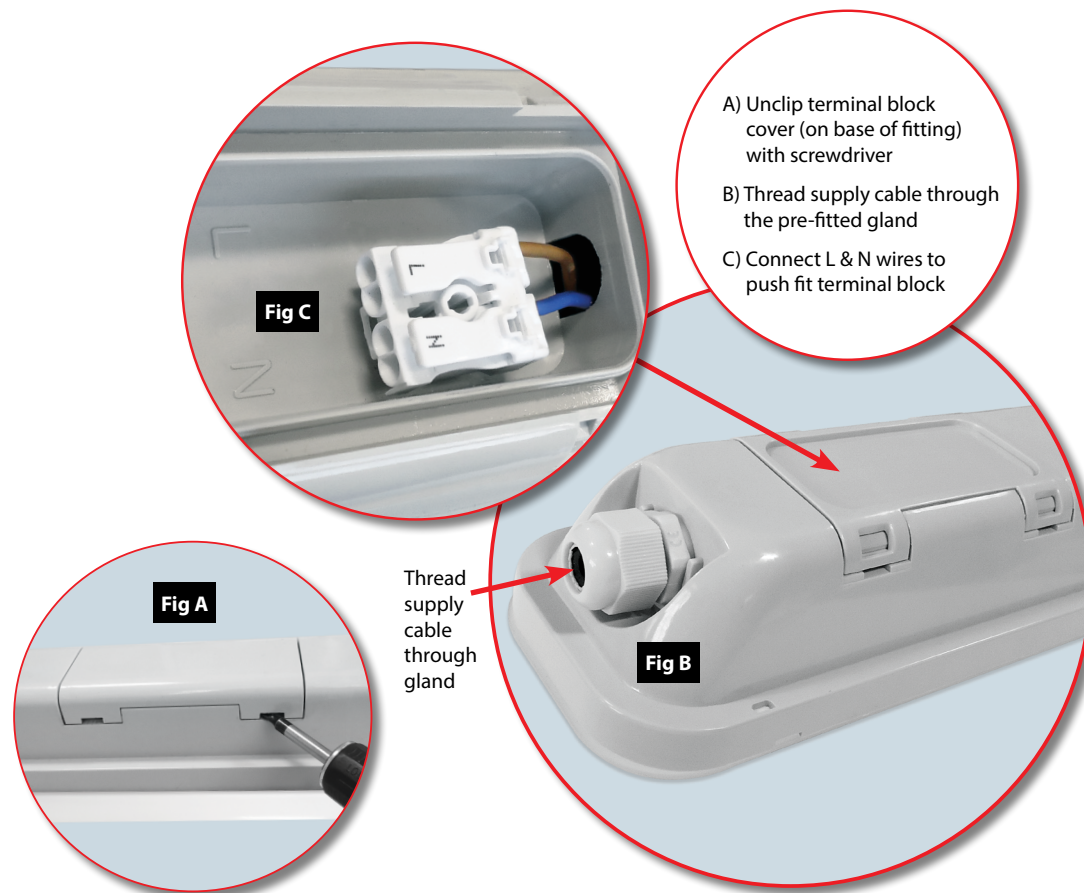


7. Replace the back plate.

8. Offer the luminaire into the two brackets in the ceiling.

9. Restore the power and switch on.

NOTE: If through-wiring there are terminal connections at the other end of the luminaire and a second 16mm cable gland is supplied. To fit this remove the diffuser and gear tray, drill suitable hole and fit the spare cable gland in place.



A) Unclip terminal block cover (on base of fitting) with screwdriver

B) Thread supply cable through the pre-fitted gland

C) Connect L & N wires to push fit terminal block

Thread supply cable through gland