

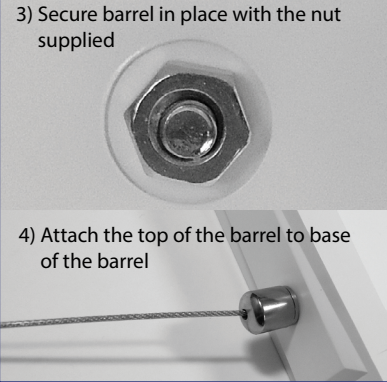
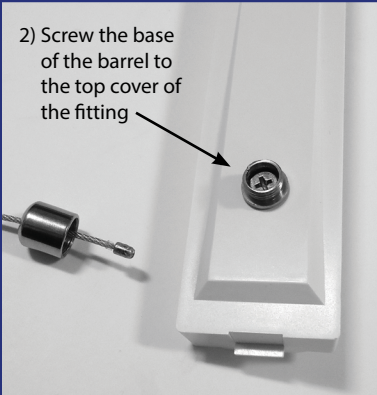
Quick Guide Mounting Instructions



1) Suspension kit is in 2 parts - cable and ceiling mount

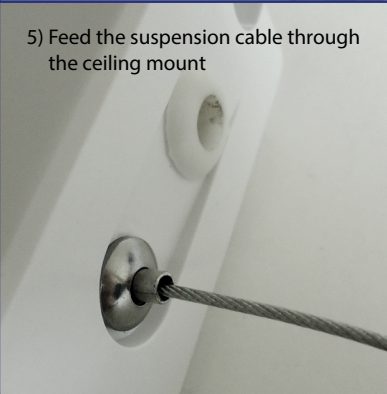


2) Screw the base of the barrel to the top cover of the fitting



3) Secure barrel in place with the nut supplied

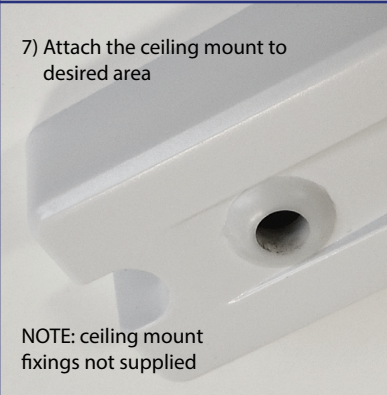
4) Attach the top of the barrel to base of the barrel



5) Feed the suspension cable through the ceiling mount

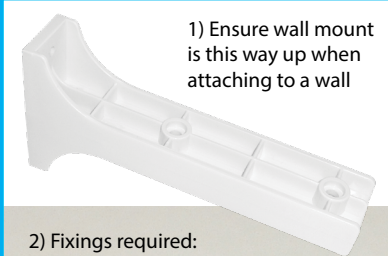


6) Adjust the cable length by pushing the release button



7) Attach the ceiling mount to desired area

NOTE: ceiling mount fixings not supplied



1) Ensure wall mount is this way up when attaching to a wall

2) Fixings required:



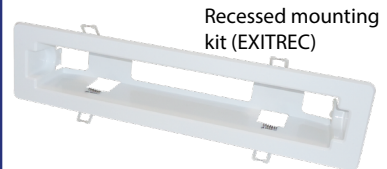
3) Feed the screws through the wall mount & the top cover of the fitting. Secure these with nuts supplied



4) Re attach the top cover of the fitting and secure with the screw that was removed earlier

WALL MOUNT (INCLUDED)

RECESSED MOUNTING KIT (EXITREC)



Recessed mounting kit (EXITREC)

1) Cut a 360mm x 65mm fixing hole ensuring the hole is cut accurately



2) Fit EXITREC into the fixing hole using it's retaining clips



3) Push the EXITMMO into the EXITREC until it is secured in place



NOTE: the charge and test buttons are still visible with the EXITREC on

DIRECT MOUNTING

The top of the fitting rotates 45° so it can be mounted directly to a ceiling or wall.

