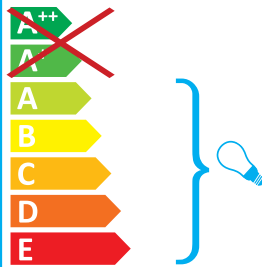


LAMP SPECIFICATIONS:	
Nominal Wattage	57W
Rated Wattage	57W
Average lifetime hours	16,000 hrs
Nominal useful luminous flux	4275 lm
Rated luminous flux	4275 lm
Luminous efficacy (Lm/W) in HF operation	75
Rated lamp Lumen maintenance	2000hrs: 90% 4000 hrs: 84% 8000 hrs: 81% 16000 hrs: 78%
Rated survival factors	2000hrs: 99% 4000 hrs: 98% 8000 hrs: 88%
Lamp dimensions (mm)	191mm
Cap type	GX24q-5
Lamp Mercury content to an accuracy of 0.1mg	4mg
Colour rendering index Ra	81
Colour temperature	6400K
Ambient temperature required to achieve maximum luminous flux	25°C
Dimmable	No

Eterna FL157B/PC



This luminaire is compatible with bulbs of the energy classes:

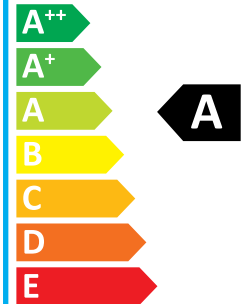


This luminaire is sold with a bulb of the energy class: **A**

874/2012



Eterna FL157B/PC

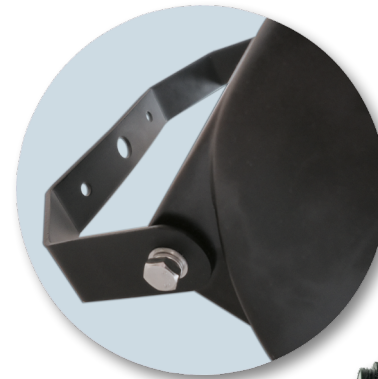


62.70 kWh/1000h



INSTALLATION INSTRUCTIONS

A guide for qualified electricians



Pack contents:
1 x Floodlight
1 x 57W Fluorescent Lamp

EVENTUALLY, YOU MAY WANT TO REPLACE THIS PRODUCT:

Regulations require the recycling of Waste from Electrical and Electronic Equipment (European "WEEE Directive" effective August 2005—UK WEEE Regulations effective 2nd January 2007). Environment Agency Registered Producer: WEE/GA0248QZ.

WHEN YOUR PRODUCT COMES TO THE END OF ITS LIFE OR YOU CHOOSE TO REPLACE IT, PLEASE RECYCLE IT WHERE FACILITIES EXIST - DO NOT DISPOSE WITH HOUSEHOLD WASTE.

CLEANING:

Disconnect the power and clean the exterior only of this fitting with a moist (not wet) cloth.

Do not use any chemical or abrasive cleaners.

IF YOU EXPERIENCE PROBLEMS:

If you believe your product is defective, please return it to the place where you bought it. Our Technical Team will gladly advise on any Eterna Lighting product, but may not be able to give specific instructions regarding individual installations.

For breakage information visit:
www.eterna-lighting.co.uk



Issue 2013



FOR PRODUCT ADVICE:

- T: 01933 673 144
- F: 01933 678 083
- E: sales@eterna-lighting.co.uk

Visit our website:

www.eterna-lighting.co.uk

Model:

FL157B / FL157BPC

57W Low Energy Floodlight / With Photocell

These instructions are provided as a guideline to assist you.

PLEASE READ THESE INSTRUCTIONS BEFORE INSTALLATION AND RETAIN FOR FUTURE REFERENCE

READ THIS FIRST:

Check the pack and make sure you have all of the parts listed on the front of this booklet. If not, contact the outlet where you bought this product.

This product contains glass, care must be taken when assembling, fitting or handling to prevent personal injury or damage to the product.

This light fitting must be installed by a competent person in accordance with the Building Regulations making reference to the current edition of the IEE Wiring Regulations (BS7671).

As the buyer, installer and/or user of this product it is your own responsibility to ensure that this fitting is fit for the purpose for which you have intended it. Eterna Lighting cannot accept any liability for loss, damage or premature failure resulting from inappropriate use.

The lamps (bulbs/tubes) supplied with this fitting are consumable parts and therefore may be outside of any warranty offered.

Switch off the mains before commencing installation and remove the appropriate circuit fuse.

When working at heights, please use a suitable platform.

Disconnect the fitting from the electrical supply before flash or high voltage testing.

Suitable for indoor and outdoor use.

FL157BPC - Do not install under eaves or in a location of frequent shadow that will prevent the light from switching on when required. Do not install near other sources of bright light that will prevent the light from switching on when the ambient light level falls.

This product is suitable for installation on surfaces with normal flammability e.g. wood, plasterboard, and masonry. It is not suitable for use on highly flammable surfaces (e.g. polystyrene, textiles).

Before making fixing hole(s), check that there are no obstructions hidden beneath the mounting surface such as pipes or cables.

The chosen location of your new fitting should allow for the product to be securely mounted and safely connected to the mains supply (lighting circuit).

When choosing the location for your new fitting, ensure that the fixings will be anchored in a solid surface e.g. concrete, brick or a joist - do not fix directly onto panelling, cladding, plasterboard etc.

If the location of your new fitting requires the provision of a new electrical supply, the supply must conform with the requirements of the Building Regulations making reference to the current edition of the IEE Wiring Regulations (BS7671).

This product is designed for permanent connection to fixed wiring: this should be either a suitable lighting circuit (protected with a 5 or 6 Amp MCB or fuse) or a fused spur (with a 3 Amp fuse) via a fused connection unit. If the connection to your fitting is to be made in a humid or wet location, the connections must be contained within an approved, ingress protected, water-proof connection box (not supplied).

We recommend that the supply incorporates a switch for ease of operation.

Make connections to the electrical supply in accordance with the following code:

Live - Brown or Red
Neutral - Blue or Black
Earth - Green and Yellow

When making connections, ensure that the terminals are tightened securely and that no strands of wire protrude. Check that the terminals are tightened onto the bared conductors and not onto any insulation. Wrap loose terminal blocks well with insulating tape.

This product must be connected to Earth.

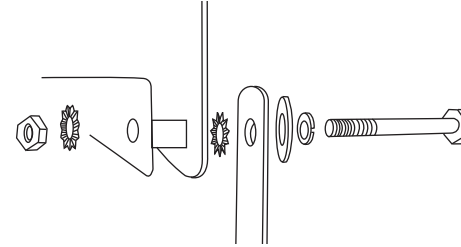
IMPORTANT - Always switch off at the mains before changing the lamp.

If the external flexible cable of this luminaire is damaged it shall be exclusively replaced by repair or service agent or similar qualified person.

You are advised at every stage of your installation to double-check any electrical connections you have made. After you have completed your installation there are electrical tests that should be carried out: these tests are specified in the Wiring Regulations (BS7671) referred to in the Building Regulations.

READ THIS FIRST:

01. Choose the location for your new floodlight giving consideration to all of the conditions listed.
02. Undo the nuts and bolts that hold the fixing strap onto the fitting noting the order and position of the various washers as shown below.



03. Using the fixing strap as a template, mark the position for the fixing holes on your mounting surface.
04. Prepare your mounting surface as appropriate for your chosen fixings (not supplied). Use a spirit level to ensure the fitting will be level.
05. Secure the fixing strap in place.
06. Attach the fitting onto the fixing strap using the fixings removed earlier, adjust the angle of your floodlight to give the desired spread of light.
07. Tighten the nuts to lock your floodlight into position.
08. Make your connections to your mains supply as described in the "Read this first" section.
09. Using a wide flat bladed screwdriver, lever the trim off the front of the floodlight.
10. Using a cross-headed screwdriver, undo the screws that secure the diffuser and lift off.
11. Fit the fluorescent lamp: Note the position of the lamp pins and push the lamp into the lampholder so that the pins engage in the holes in the socket. Make sure the lamp is pressed fully into position.
12. Replace the diffuser and tighten making sure that the waterproof gasket is correctly positioned and compressed.
13. Press the trim back onto the front of the fitting making sure the slots used for removal are at the bottom.
14. Restore the power and switch on.
15. **FL157B**: The fitting should light when switched on.

FL157BPC: The fitting will light when the power has been restored and the ambient light level falls below the preset threshold (not adjustable).

LAMP REPLACEMENT:

01. Switch off the electricity at the mains.
02. Using a wide flat bladed screwdriver, lever off the trim from the front of the fitting.
03. Using a cross-headed screwdriver, loosen the screws and lift off the diffuser.
04. Remove the lamp by pulling directly to the side.
05. Press a new lamp into position noting the position of the lamp pins and holes in the lampholder.
06. Push the lamp firmly to ensure that it is correctly engaged in the lampholder.
07. Replace the diffuser and secure in position making sure that the gasket is correctly positioned and compressed.
08. Press the trim back onto the fitting making sure that the slots used for removal are at the bottom.
09. Restore the power and switch on.

REPLACEMENT LAMP TYPE:

Requires 1 x 57W GX24q-5 triple turn T 4 pin CFL 6400K (included).

Fitting is rated at 57W max.

Replacement lamp available from Eterna: CFL57W.