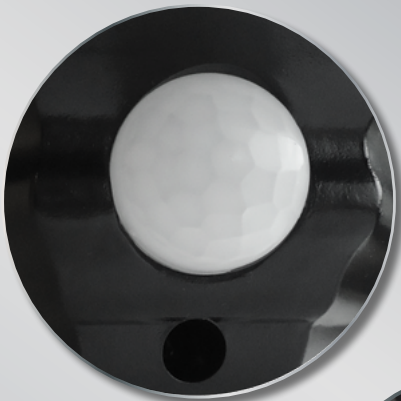
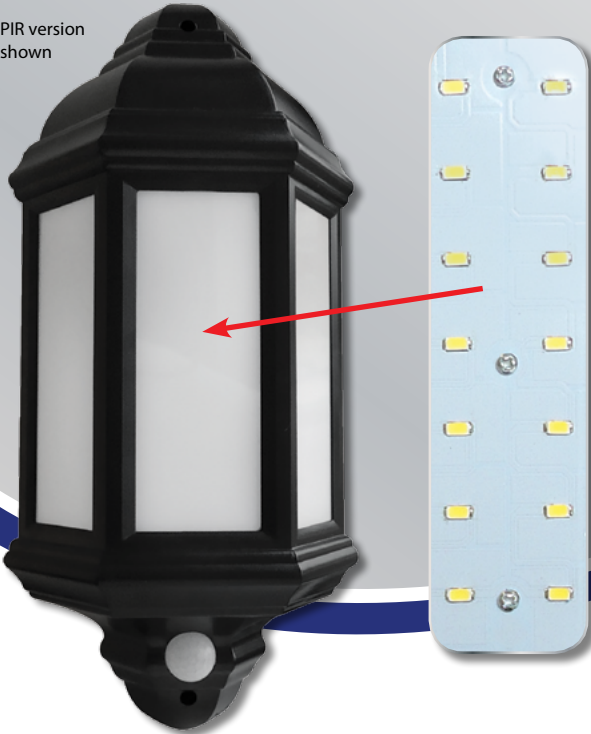


PIR version shown



7W LED HALF LANTERN / WITH PIR

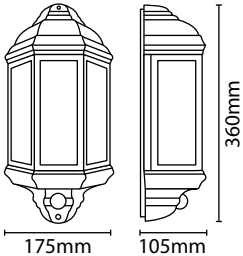
Energy efficient LED alternative to traditional lanterns

- 7W, 420 Lumens, 35,000 hours average rated life
- Tough polycarbonate construction

PIR VERSION:

- Time on adjustment 5 secs - 5 mins
- Lux level adjustments
- 120° detection angle
- 8 metre detection range

• M.O.M: 1 / O.P.Q: 10



Code	Version	Colour	Wattage	Colour Temp.	Lumens	Avg. Rated Life (Hrs)	IP Rating	Energy Rating
HALFBK	Standard	Black	7W	3100K	420 lm	35,000 hrs	IP44	A
HALFPIRBK	120° PIR							



Eterna HALFBK/HALFPIRBK



This luminaire contains built-in LED lamps.



LED

The lamps cannot be changed in the luminaire.

874/2012



LAMP SPECIFICATIONS:

Lumens total flux	420 lm
Lumens 120° flux	380 lm
Rated Wattage	7W
Rated luminous flux	380 lm
Nominal life time of the lamp	35,000 hrs
Colour temperature	3100K
Number of switching cycles before premature lamp failure	≥15,000
Warm-up time up to 60 % of the full light output	Instant full light
Dimmable	No
LED array dimensions (L/W)	130x35mm
Nominal beam angle	120°
Rated power	7W
Rated lamp lifetime	35,000 hrs
Lamp power factor	>0.5s
Lumen maintenance factor at end of nominal life	≥0.70
Starting time	<0.1s
Colour rendering	≥80
Colour consistency	Within 6 step Macadam ellipse
Rated peak intensity	110cd
Rated beam angle	120°
Voltage	240V

Not suitable for accent lighting