



**5**  
Year Warranty



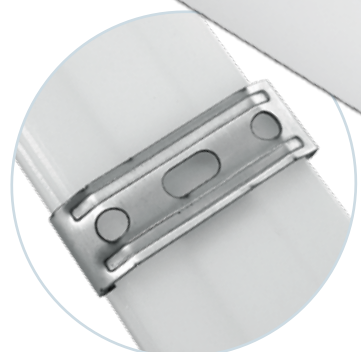
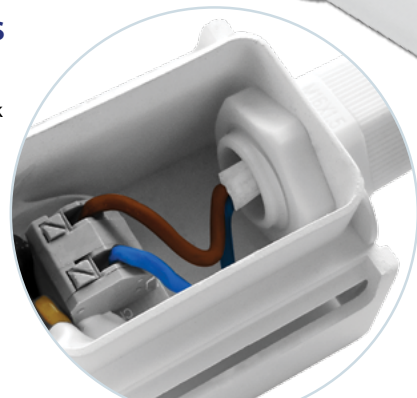
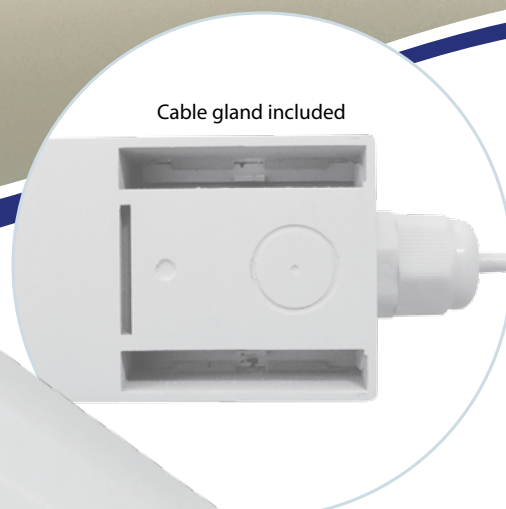
✓ IES Files



Double Insulated



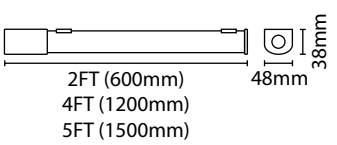
Hole Knockouts



**Eterna**<sup>®</sup>  
Everyday Lighting For Professionals

**IP65 NANO UTILITY BATTENS**

- Tough polycarbonate construction
- Push fit terminal connections for quick installation
- Cable gland included



LED LAMP SPECIFICATIONS:	2ft	4ft	5ft
Luminaire lumens (with diffuser)	<b>1800 lm</b>	<b>2550 lm</b>	<b>2870 lm</b>
Lumens from chip (no diffuser)	<b>1900 lm</b>	<b>2700 lm</b>	<b>3100 lm</b>
Useful lumens	<b>1700 lm</b>	<b>2400 lm</b>	<b>2780 lm</b>
Rated Wattage	15W	20W	25W
Rated luminous flux	1700 lm	2400 lm	2780 lm
Nominal life time of the lamp	40,000 hrs	40,000 hrs	40,000 hrs
Colour temperature	4000K	4000K	4000K
Number of switching cycles before premature lamp failure	≥15,000	≥15,000	≥15,000
Warm-up time up to 60% of the full light output	Instant Full Light	Instant Full Light	Instant Full Light
Dimmable	No	No	No
Nominal beam angle	120°	120°	120°
Rated power	15W	20W	25W
Rated lamp lifetime	40,000 hrs	40,000 hrs	40,000 hrs
Lamp power factor	>0.55	>0.55	>0.9
Lumen maintenance factor at end of nominal life	≥0.70	≥0.70	≥0.70
Starting time	Instant full light	Instant full light	Instant full light
Colour rendering	≥80	≥80	≥80
Colour consistency	Within a six step Macadam ellipse	Within a six step Macadam ellipse	Within a six step Macadam ellipse
Rated peak intensity	507cd	716cd	837cd
Rated beam angle	120°	120°	120°
Voltage / Frequency	240V~50Hz	240V~50Hz	240V~50Hz
Class 2 double insulated			
Not suitable for accent lighting			

Code	Length	Wattage	Colour Temp.	Lumens	Avg. Rated Life (Hrs)	IP Rating	MOM / OPQ
KNANOIP2FT	2ft	15W	4000K	1800 lm	40,000 hrs	IP65	1 / 20
KNANOIP4FT	4ft	20W		2550 lm			
KNANOIP5FT	5ft	25W		2870 lm			