



WARNING!

Children of less than 3 years should be kept away from the heater unless continuously supervised.

Children aged from 3 years and less than 8 years shall only switch on/off the appliance provided that it has been placed or installed in its intended normal operating position and they have been given supervision or instruction concerning use of the appliance in a safe way and understand the hazards involved. Children aged from 3 years and less than 8 years shall not plug in, regulate and clean the appliance or perform user maintenance.



CAUTION!

SOME PARTS OF THIS PRODUCT CAN BECOME VERY HOT AND CAUSE BURNS. PARTICULAR ATTENTION HAS TO BE GIVEN WHERE CHILDREN AND VULNERABLE PEOPLE ARE PRESENT.

CLEANING:

Always remove the plug from the electrical socket and allow the heater to cool down before cleaning the heater.

Wipe heater with a soft dry cloth.

Wind the cable around the cable tidy and store the heater in a clean dry place.

CLEANING WARNING:

Do not immerse the heater in water.

Do not use any cleaning chemicals such as detergents and abrasives.

Do not allow the interior to get wet.

EVENTUALLY, YOU MAY WANT TO REPLACE THIS PRODUCT:

Regulations require the recycling of Waste from Electrical and Electronic Equipment (European "WEEE Directive" effective August 2005—UK WEEE Regulations effective February 2014). Environment Agency Registered Producer: WEE/GA0248QZ.

WHEN YOUR PRODUCT COMES TO THE END OF ITS LIFE OR YOU CHOOSE TO REPLACE IT, PLEASE RECYCLE IT WHERE FACILITIES EXIST - DO NOT DISPOSE WITH HOUSEHOLD WASTE.

IF YOU EXPERIENCE PROBLEMS:

If you believe your product is defective, please return it to the place where you bought it. Our Technical Team will gladly advise on any Eterna Lighting product, but may not be able to give specific instructions regarding individual installations.



Pack contents:

- 1 x Oil filled heater c/w 10A. fused, 3 pin plug fitted
- 2 x Heater wheel clamping plates
- 4 x Castor wheels
- 4 x Dome nuts
- 2 x U clamping bolts
- 2 x U clamp securing wing nuts

As with all portable heating appliances - this product is only suitable for well insulated spaces or occasional use.

Model:

OILHT157 / OILHT211

1.5kW / 2kW Oil Filled Heater

These instructions are provided as a guideline to assist you.

PLEASE READ THESE INSTRUCTIONS BEFORE INSTALLATION AND RETAIN FOR FUTURE REFERENCE



Email: sales@eterna-lighting.co.uk / technical@eterna-lighting.co.uk

Visit our website: www.eterna-lighting.co.uk

Made in China

READ THIS FIRST:

Check the pack and make sure you have all of the parts listed on the front of this booklet. If not, contact the supplier where you bought this product.

IMPORTANT SAFEGUARDS:

When using an electrical appliance, basic safety precautions should always be observed, including the following:

This appliance is not intended for use by persons (including children) with reduced physical, sensory or mental capabilities, or lack of experience and knowledge, unless they have been given supervision or instruction concerning use of the appliance by a person responsible for their safety.

Extreme caution is necessary where children or persons with reduced physical, sensory or mental capabilities may come into contact with the heater when in use.

This heater is hot when in use. To avoid burns and personal injury, do not let bare skin touch hot surfaces. Never leave the heater unattended whilst it is in use.

The product is for household/office use only.

WARNING - In order to avoid overheating when in use, do not cover the heater or position where it may come in contact with flammable materials, such as curtains, drapes etc. to avoid the risk of fire.

WARNING - When scrapping the heater, follow the regulations concerning the disposal of oil.

This heater is filled with a precise quantity of special oil. In case of leakage or repair which requires opening of the oil container this should only be carried out by the manufacturer or qualified engineer.

The heater must not be located adjacent to or against an electrical socket.

Do not run the cord under carpets/rugs.

Arrange the cord away from high traffic areas and where it will not present a trip hazard.

Do not operate the heater with a damaged cord/plug or if the heater malfunctions.

If the supply cord is damaged, it must be replaced by qualified engineer.

Avoid the use of an extension cord as this may overheat and cause a risk of fire.

Use the heater in a well ventilated area.

Do not use the heater in any areas where petrol, paint or other flammable liquids are stored e.g. garages or workshops.

Do not use this heater in the immediate surroundings of a bath, shower, swimming pool or where water is present.

WARNING:

Only operate the heater in an upright position with the feet attached, any other position could cause malfunction.

When in use this product contains hot liquid.

Before each use the user must make a physical inspection to ensure there is no damage to the metal case of the product.

Do not try to repair the heater yourself, always consult a suitably qualified engineer.

Never leave the heater unattended when it is in use.

Do not use the heater in small rooms when they are occupied by persons who are not capable of leaving the room on their own, unless constant supervision is provided.

ASSEMBLY INSTRUCTIONS:

YOU MUST ATTACH THE FEET BEFORE OPERATING THE HEATER.

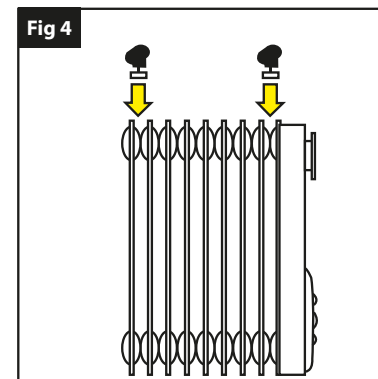
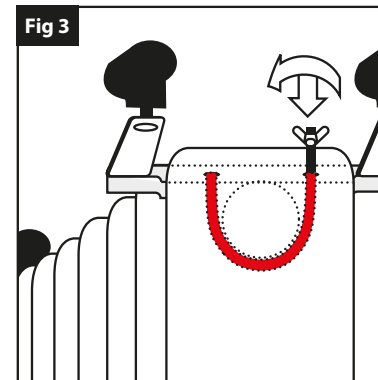
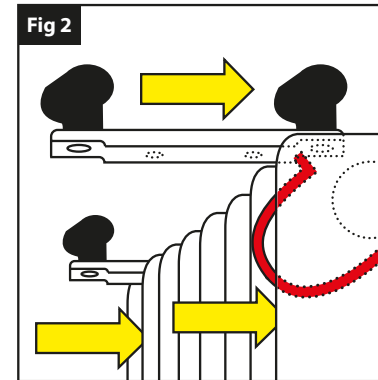
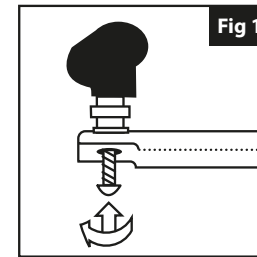
1. Place the radiator upside-down on a scratch-free location, making sure it is stable and will not fall.
2. Attach wheels to wheel base (fig1).
3. Place the 'hook' end of the U bolt bracket into the wheel base assembly and position between the first two fins (fig 2).
4. Lift the U bolt bracket to position the screwed portion through the Wheel Assembly and secure with wing nut provided. Taking care not to overtighten (fig 3).
5. Repeat 3 & 4 to fix second wheel assembly between last 2 fins. (fig 4).
6. Once wheel assemblies are both secure turn Heater the right way up.

SPECIFICATION:

VOLTAGE: 220-240V~50Hz
OILHT157 - POWER MAX: 1.5kW
OILHT211 - POWER MAX: 2kW

Useful Energy Efficiency (at nominal heat output)	100%
Useful Energy Efficiency (at minimum load)	40%

NOTE: When in use ensure full length of cable is uncoiled from the cable tidy.



INSTRUCTIONS FOR USE:

WHEN IN USE THIS PRODUCT CONTAINS HOT LIQUID.



BEFORE EACH USE THE USER MUST MAKE A PHYSICAL INSPECTION TO ENSURE THERE IS NO DAMAGE TO THE METAL CASE OF THE PRODUCT.

NOTE: When the heater is turned on for the first time or after having not been used for a long period, it may smell for a short while.

1. Position the heater on a flat and stable surface.
2. Set all controls to OFF and insert the plug into an electrical socket.
3. Rotate the thermostat knob clockwise to MAX position and switch the heater on as follows:

OILHT157:

I = Low heat (600W)
II = Medium heat (900W)
I + II = High heat (1.5kW)

OILHT211:

I = Low heat (800W)
II = Medium heat (1.2kW)
I + II = High heat (2kW)

4. When your room reaches the desired temperature, slowly rotate the thermostat knob counter clockwise until the red indicator light goes out. The thermostat can now be left at this setting. As soon as the room temperature has dropped below the set temperature, the unit will switch itself on automatically until the set temperature has been reached again. In this way the room temperature remains constant with the most economical use of electricity.
5. To change the room temperature setting, rotate the thermostat knob clockwise to raise the temperature, or anti-clockwise to lower it.
6. This heater includes an overheat protection system that shuts off the heater when parts of the heater get excessively hot.
7. This unit is fitted with anti-tip cut-out protection. Should the unit not be in the correct vertical position, the heater will shut off.
8. To completely shut the heater off, turn all the controls to OFF, and remove plug from the electrical socket.

Model Identifier(s):		OILHT157	OILHT211	
Heat output				
Nominal heat output	Pnom	1.5	2.0	kW
Minimum heat output (indicative)	Pmin	0.6	0.8	kW
Maximum continuous heat output	Pmax,c	1.5	2.0	kW
Auxiliary electricity consumption				
At nominal heat output	elmax	0.000	0.000	kW
At minimum heat output	elmin	0.000	0.000	kW
In standby mode	eSB	N/A	N/A	kW
Type of heat output/room temperature control				
With mechanic thermostat room temperature control				Yes

Contact details: Eterna Lighting Ltd, Huxley Close, Wellingborough, Northamptonshire NN8 6AB