

| LAMP SPECIFICATIONS:                                     |                                   |
|--|-----------------------------------|
| Luminaire lumens (with glass diffuser)                   | <b>600 lm</b>                     |
| Lumens from chip (no diffuser)                           | <b>800 lm</b>                     |
| Useful lumens  | <b>570 lm</b>                     |
| Rated Wattage  | 10W                               |
| Rated luminous flux                                      | 570 lm                            |
| Nominal life time of the lamp                            | 30,000 hrs                        |
| Colour temperature                                       | 6000K                             |
| Number of switching cycles before premature lamp failure | >15,000                           |
| Warm-up time up to 60 % of the full light output         | 0.2s                              |
| Dimmable   | No                                |
| LED dimensions   | 11mm <sup>2</sup>                 |
| Nominal beam angle                                       | 120°                              |
| Rated power  | 10W                               |
| Rated lamp lifetime                                      | 30,000 hrs                        |
| Lumen maintenance factor at end of nominal life          | 50%                               |
| Starting time  | 0.2s                              |
| Colour rendering   | ≥65                               |
| Colour consistency                                       | Within a six step Macadam ellipse |
| Rated peak intensity                                     | 210cd                             |
| Rated beam angle   | 120°                              |
| Charger Output Voltage                                   | 8.4V 1A                           |
| Not suitable for accent lighting                         |                                   |

### EVENTUALLY, YOU MAY WANT TO REPLACE THIS PRODUCT:

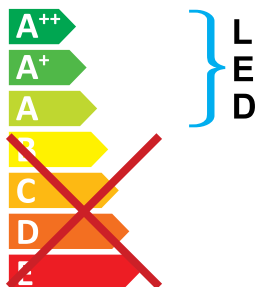
Regulations require the recycling of Waste from Electrical and Electronic Equipment (European "WEEE Directive" effective August 2005—UK WEEE Regulations effective 2nd January 2007). Environment Agency Registered Producer: WEE/GA0248QZ.

WHEN YOUR PRODUCT COMES TO THE END OF ITS LIFE OR YOU CHOOSE TO REPLACE IT, PLEASE RECYCLE IT WHERE FACILITIES EXIST - DO NOT DISPOSE WITH HOUSEHOLD WASTE.

**Eterna** RCFLOOD10



This luminaire contains built-in LED lamps.



The lamps cannot be changed in the luminaire.

874/2012



### CLEANING:

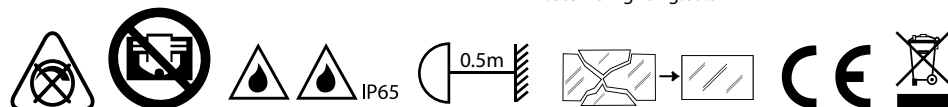
Clean this fitting only with a soft dry cloth.

Do not use any chemical or abrasive cleaners.

### IF YOU EXPERIENCE PROBLEMS:

If you believe your product is defective, please return it to the place where you bought it. Our Technical Team will gladly advise on any Eterna Lighting product, but may not be able to give specific instructions regarding individual installations.

For breakage information visit:  
[www.eterna-lighting.co.uk](http://www.eterna-lighting.co.uk)



Email: [sales@eterna-lighting.co.uk](mailto:sales@eterna-lighting.co.uk) / [technical@eterna-lighting.co.uk](mailto:technical@eterna-lighting.co.uk)

Issue 0216

Visit our website: [www.eterna-lighting.co.uk](http://www.eterna-lighting.co.uk)

Made in China



## INSTALLATION INSTRUCTIONS

A guide for qualified electricians



Model:  
**RCFLOOD10**

**10W Rechargeable LED Floodlight**

These instructions are provided as a guideline to assist you.

**PLEASE READ THESE INSTRUCTIONS BEFORE INSTALLATION  
AND RETAIN FOR FUTURE REFERENCE**

### Pack contents:

1 x Floodlight  
1 x Mains charger  
1 x Car charger

### READ THIS FIRST:

This product contains glass, care must be taken when assembling, fitting or handling to prevent personal injury or damage to the product.

As the buyer, installer and/or user of this product it is your own responsibility to ensure that this fitting is fit for the purpose for which you have intended it. Eterna Lighting cannot accept any liability for loss, damage or premature failure resulting from inappropriate use.

This unit is suitable for both indoor and outdoor use (not to be used outside when charging).

Do not charge in the bathroom or near water.

Do not use this portable floodlight where there are flammable liquids or gasses.

The lamp must be positioned so that there is at least 0.5m (500mm) between the bulb and any illuminated surface.

This product is not intended to be used by children and persons with sensory, physical and/or mental impairments that would prevent them from using it safely.

Small children should be supervised to ensure that they do not play with this appliance.

### IMPORTANT:

The plug is fitted with a suitable fuse. When replacing, use only a suitable fuse approved to BS1362 and carrying the relevant approval mark. Never use the plug with the fuse bypassed or omitted. If the external flexible cable of this luminaire is damaged it shall be exclusively replaced by a service agent or similar qualified engineer.

### LAMP REPLACEMENT:

This luminaire has a sealed LED lamp and is maintenance free, no lamp replacement is required.

### BATTERY CHARGING:

Charge times from full discharge are as follows:

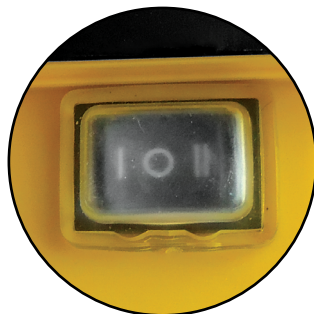
4 hours (mains charger)  
6 hours (car charger)

### USAGE:

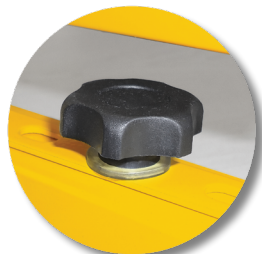
The switch has three settings:

- 0 = OFF
- I = 60% Light Output
- II = 100% Light Output

The 60% setting will increase how long the light remains illuminated.



The light can be rotated on the horizontal plane using the adjustable screw and on the vertical plane by loosening the bracket connection to the body. (Note: Allen key not supplied).



### INDUSTRIAL BATTERIES:

Within certain products Eterna Lighting Ltd places lead acid, lithium ion, nickel cadmium & nickel metal hydride batteries on the market. Industrial batteries are subject to waste regulation under the Waste Batteries and Accumulators Regulations 2009 and should be disposed of responsibly. Purchasers may be able to dispose of their waste industrial batteries locally via legitimate licensed trade waste contractors. Eterna is obliged to take back, free of charge and within a reasonable time, waste industrial batteries of the same chemistry supplied to a Purchaser, for treatment and recycling and is required to do this in any calendar year new industrial batteries are placed on the market. In certain circumstances, this may include batteries not originally supplied by Eterna. If any Purchaser requires Eterna to take back Industrial batteries, they should write to the Operations Director, Eterna Lighting Ltd, Huxley Close, NN8 6AB, who will then advise on the necessary arrangements for the receipt, proper treatment and recycling of, the waste industrial batteries.

### WARNING!



To maintain the lamp and ensure safety please follow the below instructions:

**DO NOT** turn on the light when charging

**DO NOT** leave the lamp on charge for over 24 hours

Only use the charger supplied with the lamp

**DO NOT** use a modified or damaged charger

**DO NOT** disassemble the lamp

Ensure that the IP plug is in place after charging and before use

Recharge the floodlight every six months when in stock.

### WARNING!



This device utilises a rechargeable Lithium-ion battery that can rupture, ignite and cause serious injury if used improperly. Please follow the below safety rules:

**DO NOT** place batteries in fire or in areas of high temperature

**DO NOT** tamper with the battery wiring

**DO NOT** puncture or damage the batteries

**DO NOT** use batteries if they appear damaged

**DO NOT** immerse the batteries in water or expose to water

**DO NOT** alter or modify the batteries

**DO NOT** attempt to change the batteries

**DO NOT** dispose of the batteries in fire or water

**DO NOT** use the charging unit outside, this is not IP rated