

REPLACEMENT BATTERY TYPE:

3.6V 800mAh Ni-Cd batteries.

BATTERY REPLACEMENT:

If after routine operation check, the lamp does not remain lit for the three hour period, a new battery pack may be required.

01. Switch off the electricity at the mains.
02. Remove the diffuser.
03. Remove the two screws indicated on the gear tray and open the fitting.
04. Disconnect the battery from the circuit board.
05. Cut the cable tie that secures the battery pack in place and lift the battery pack out of the fitting.
06. Write current date on the new battery pack.
07. Fit new battery pack securing in place using cable tie.
08. Connect the battery to the circuit board.
09. Close and secure gear tray.
10. Replace diffuser.

EVENTUALLY, YOU MAY WANT TO REPLACE THIS PRODUCT:

Regulations require the recycling of Waste from Electrical and Electronic Equipment (European "WEEE Directive" effective August 2005—UK WEEE Regulations effective 2nd January 2007). Environment Agency Registered Producer: WEE/GA0248QZ.

WHEN YOUR PRODUCT COMES TO THE END OF ITS LIFE OR YOU CHOOSE TO REPLACE IT, PLEASE RECYCLE IT WHERE FACILITIES EXIST - DO NOT DISPOSE WITH HOUSEHOLD WASTE.

INDUSTRIAL BATTERIES:

Within certain products Eterna Lighting Ltd places lead acid, lithium ion, nickel cadmium & nickel metal hydride batteries on the market. Industrial batteries are subject to waste regulation under the Waste Batteries and Accumulators Regulations 2009 and should be disposed of responsibly. Purchasers may be able to dispose of their waste industrial batteries locally via legitimate licensed trade waste contractors. Eterna is obliged to take back, free of charge and within a reasonable time, waste industrial batteries of the same chemistry supplied to a Purchaser, for treatment and recycling and is required to do this in any calendar year new industrial batteries are placed on the market. In certain circumstances, this may include batteries not originally supplied by Eterna. If any Purchaser requires Eterna to take back Industrial batteries, they should write to the Operations Director, Eterna Lighting Ltd, Huxley Close, NN8 6AB, who will then advise on the necessary arrangements for the receipt, proper treatment and recycling of, the waste industrial batteries.

SPECIFICATIONS:

Self test in accordance with BS EN 62034 : 2012

Rated wattage: 3.5W
Viewing distance: 30m

IF YOU EXPERIENCE PROBLEMS:

If you believe your product is defective, please return it to the place where you bought it. Our Technical Team will gladly advise on any Eterna Lighting product, but may not be able to give specific instructions regarding individual installations.

The light source is designed to last the lifetime of the luminaire.

The light source contained in this luminaire shall only be replaced by the manufacturer, service agent or a similar qualified person.

CAUTION, RISK OF ELECTRIC SHOCK.



 **Eterna**
Everyday Lighting For Professionals

INSTALLATION INSTRUCTIONS

A guide for qualified electricians

3 HOURS DURATION IN EMERGENCY MODE



Pack contents:
1 x LED fitting with up legend
1 x Maintenance check record

Model:

SELMDDEM3

Self Test Recessed LED Emergency Drop Sign

These instructions are provided as a guideline to assist you.

**PLEASE READ THESE INSTRUCTIONS BEFORE INSTALLATION
AND RETAIN FOR FUTURE REFERENCE**

Email: sales@eterna-lighting.co.uk / technical@eterna-lighting.co.uk

Visit our website: www.eterna-lighting.co.uk

Made in China

READ THIS FIRST:

Check the pack and make sure you have all of the parts listed on the front of this booklet. If not, contact the outlet where you bought this product.

This light fitting must be installed by a competent person in accordance with the Building Regulations making reference to the current edition of the IEE Wiring Regulations (BS7671).

As the buyer, installer and/or user of this product it is your own responsibility to ensure that this fitting is fit for the purpose for which you have intended it. Eterna Lighting cannot accept any liability for loss, damage or premature failure resulting from inappropriate use.

This product is designed and constructed according to the principles of the appropriate British Standard and is intended for normal service. Use of this fitting in any other environment, for example in higher than normal ambient temperatures, may result in a foreshortened working life.

The batteries supplied with this fitting are consumable parts and therefore may be outside of any warranty offered.

Switch off the mains before commencing installation and remove the appropriate circuit fuse.

When working at heights, please use a suitable platform.

Suitable for indoor use only.

This product is suitable for installation on surfaces with normal flammability e.g. wood, plasterboard, masonry. It is not suitable for use on highly flammable surfaces (e.g. polystyrene, textiles).

This product is suitable for mounting in plasterboard ceilings, suspended ceilings and similar board surfaces. Check specification of ceiling for suitability.

Before making fixing hole(s), check that there are no obstructions hidden beneath the mounting surface such as pipes or cables.

The chosen location of your new fitting should allow for the product to be securely mounted and safely connected to the mains supply (lighting circuit).

Do not attach to surfaces which are damp or freshly painted.

This product is designed for permanent connection to fixed wiring: this should be either a suitable lighting circuit (protected with a 5 or 6 Amp MCB or fuse) or a fused spur (with a 3 Amp fuse) via a fused connection unit.

Make connections to the electrical supply in accordance with the following code:

Live - Brown or Red, Neutral - Blue or Black
Earth - Green and Yellow

When making connections, ensure that the terminals are tightened securely and that no strands of wire protrude. Check that the terminals are tightened onto the bared conductors and not onto any insulation. Wrap loose terminal blocks well with insulating tape.

This product must be connected to Earth.

You are advised at every stage of your installation to double-check any electrical connections you have made. After you have completed your installation there are electrical tests that should be carried out: these tests are specified in the Wiring Regulations (BS7671) referred to in the Building Regulations.

IMPORTANT NOTES:

The control gear must be operated only within the enclosure supplied. The gear must not be operated outside of the enclosure.

The battery charging circuit and DC ballast are separated from the mains by at least basic (single layer) insulation.

When energised by a constant mains supply, the battery will be constantly charged whether or not the lamp is illuminated. On failure of the constant mains supply, the fitting will switch automatically using transistorised switching from battery charging to battery discharge powering the lamp whether or not the lamp was illuminated before the power failure. Both the mains and battery supplies incorporate fuse protection: see fitting for location and rating.

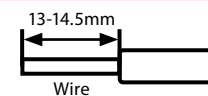
CLEANING:

Clean this fitting only with a soft dry cloth.
Do not use any chemical or abrasive cleaners.

NOTE: please keep this instruction booklet and the test record in a safe place. A fire officer or other authorised person may want to see your record of inspection and testing.

INSTALLATION:

NOTE: Wires should be stripped 13-14.5mm for best fit with the push-fit terminal block.

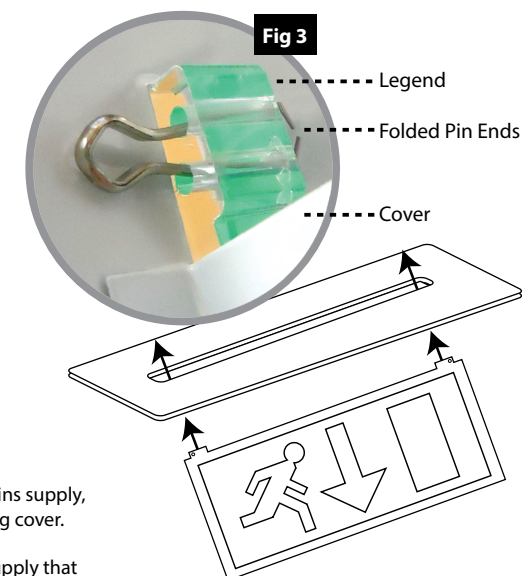
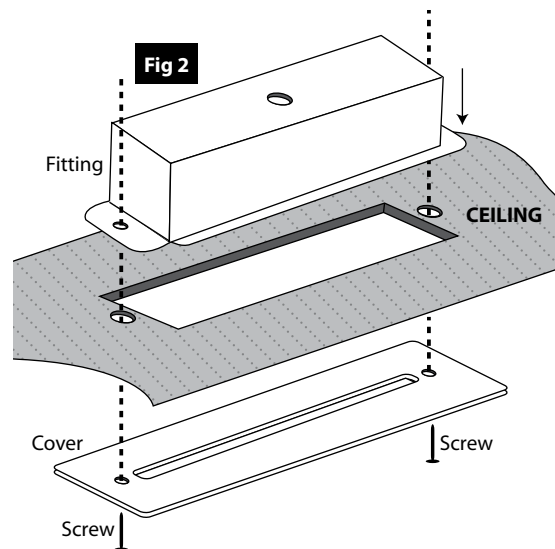
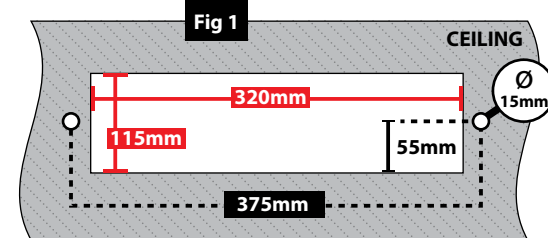


- Undo the screws at each end of the diffuser or front plate and lift off.
- Decide which of the cable entries you need to use and remove one of the knock-outs if necessary.
- Cut the hole in your mounting surface using the dimensions, see Fig 1.
- Offer the fitting up through the hole in the ceiling and allow to rest with the two large ears on the top side of your ceiling, see Fig 2.
- Undo the screws at each end of the gear tray and allow to drop open.
- Thread the mains supply cable in through the hole in the back of the fitting.
- Make the electrical connections according to the colour code opposite. Take care not to leave any strands protruding from the terminals and to tighten all terminals securely. Ensure also that the terminals clamp onto the bare wire and not onto the insulation.
- Mark the current date on the battery pack.
- Connect the battery pack to the circuit board.
- Close the gear tray and secure using the screws removed earlier, see Fig 3.
- Fit the sign panel into the slotted front plate:
 - Offer the top of the sign panel into the slot in the diffuser from beneath and press down on the top of the diffuser until it rests on the shoulders at the top of the panel.
 - Fit the small split-pins into the holes at each end of the top edge of the sign panel and bend the ends over to stop them from coming out again, see Fig 3.
- Replace the diffuser or front plate and tighten securely making sure that the fitting is properly located around the hole in your ceiling.



NOTE: this unit has a permanent live mains supply, please ensure you isolate before removing cover.

There may also be a separate switched supply that controls the emergency light fitting - this also needs to be isolated.



OPERATION CHECKS:

This product is fitted with an automatic, self-test function that will commission and test itself in accordance with the requirements of the British Standards. Monthly and annual tests will be automatically completed as detailed below with tests including battery charge condition, functional test and duration test.

Monthly – ten minute functional test

Annually – full three-hour duration test

- On installation a date will be randomly assigned for the first monthly and first annual test.
- The initial monthly test will be between 16 and 30 days from installation.
- The initial full-duration test will be between 200 and 360 days from installation (annual tests will then be conducted every 360 days).
- The schedule of these tests will be remembered for a period of 7 days if no power is supplied to the luminaire.
- If there is a mains failure in 24 hours before a test is due to be conducted, the test will automatically be postponed until sufficient time is allowed to recharge the battery.
- If there is a mains failure during the self-test operation the unit will go into emergency mode.

TESTING

This product is designed to conduct self-testing in accordance with EN 62034, the results of monthly and annual tests should be endorsed on the test record form supplied.

Because of the possibility of a failure of the normal lighting supply occurring shortly after a period of testing of the emergency lighting system or during the subsequent recharge period, all full duration tests shall wherever possible be undertaken preceding time of low risk to allow for battery recharge.

Daily:

Visual inspection of the battery charge LED.

Each Month:

The product will be energised from its battery for adequate time to ensure that emergency mode is functioning correctly.

Once Each Year:

The product will be placed into emergency mode and check that the duration provided meets the specified time period.

There is a control button within the fitting:

- Press for 1 second to reset the timer function, the monthly test will then be conducted after 30 days and the annual test after 360 days.
- Press for 3 seconds to initiate a 5 minute functional test.

NOTE: This can only be completed under mains conditions and accordingly must only be conducted by a qualified electrician.



— SW1

PERFORMANCE AND FAULT INDICATORS:

Normal operation	constant green LED
Duration test underway	red indicator flashing rapidly
Battery circuit failure	red indicator flashing once every 3 seconds
Light source failure	red indicator flashing twice every 3 seconds
Failure of duration test	red indicator flashing three times every 3 seconds
Auto test function fails	red indicator flashing four times every 3 seconds
LED indicator off	in emergency mode (mains failure)

