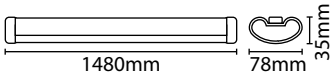


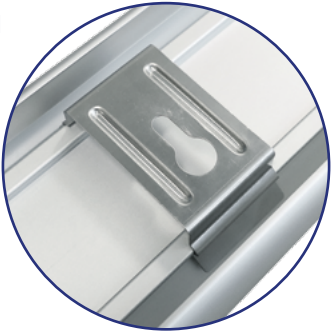
3000K / 5000 lm
option shown



**5FT ECONOMY LED COLOUR
TEMPERATURE SELECTABLE BATTEN**

- Aluminium body and polycarbonate diffuser
- Three colour temperature options selected by switch - 3000K, 4000K & 6800K
- Pre-wired with 1m cable
- Supplied with plug connector for ease of installation - with a slim design this can be concealed when installed
- Up to 100 lm / W
- 5 year warranty

• M.O.M: 1 / O.P.Q: 10



3000K
5000 lm

4000K
5900 lm

6800K
5350 lm

Code	Colour	Wattage	Colour Temp.	Luminaire Lumens	Avg. Rated Life (Hrs)	IP Rating
VECOCSBAT5	Matt Silver	58W	3000/4000/6800K	5000/5900/5350 lm	30,000 hrs	IP42

LED LAMP SPECIFICATIONS:

Luminaire lumens (with diffuser): Warm White, Cool White, Daylight White	5000 lm 5900 lm 5350 lm
Lumens from chip (array): Warm White, Cool White, Daylight White	7150 lm 7850 lm 7450 lm
Useful lumens (array): Warm White, Cool White, Daylight White	4650 lm 5450 lm 5000 lm
Rated Wattage	58W
Rated luminous flux	4650/5450/5000 lm
Nominal life time of the lamp	30,000 hrs
Colour temperature	3000/4000/6800K
Number of switching cycles before premature lamp failure	>15,000
Warm-up time up to 60% of the full light output	Instant full light
Dimmable	No
Nominal beam angle	120°
Rated power	58W
Rated lamp lifetime	30,000 hrs
Lamp power factor	>0.9
Lumen maintenance factor at end of nominal life	>0.7
Starting time	0.1s
Colour rendering	>80
Colour consistency	Within 6 step Macadam ellipse
Rated peak intensity	1743cd
Rated beam angle	120°
Voltage / Frequency	240V~50Hz
Not suitable for accent lighting	