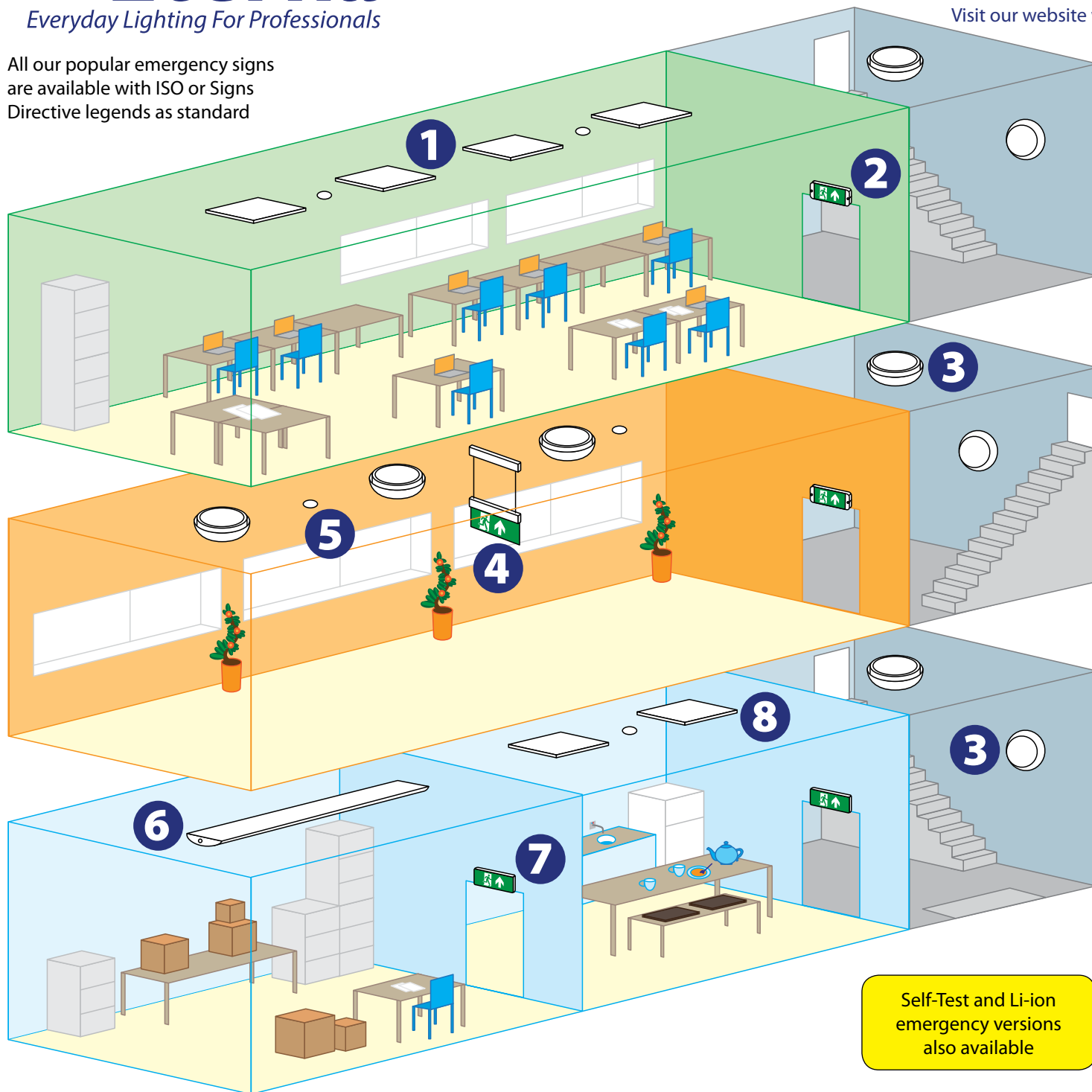


All our popular emergency signs
are available with ISO or Signs
Directive legends as standard



Self-Test and Li-ion
emergency versions
also available

1



600P4KTPU
Low glare UGR≤19 panel

2



EML3MISO
Emergency exit bulkhead

3



CSLEDWH
Carina ceiling/wall light

4



SIGNEM3ISO
EM3 exit hanging sign

5



LDLEM3
Emergency downlight

6



ELEGAN5EM3
5ft emergency fitting

7



EXIT3MLISO
Emergency exit box

8



600P4K
4000K TP(b) panel

LED LOW GLARE UGR≤19 PANEL

30W | 4000K | 3150 lm | 40,000 hrs | IP20

- Eliminates the need for TP(a) or TP(b) compliance due to steel construction
- Includes a plug and play constant current non-dimmable LED driver
- High CRI (≥80:) to minimise colour distortion of illuminated area & objects
- Push fit wiring terminal direct into the LED driver, terminal capacity up to 1.5mm²
- Emergency battery packs available

1



Code
600P4KTPU

LED MAINTAINED EM3 BULKHEAD

7W | 6000K | 30,000 hrs | IP65

- Polycarbonate construction
- ISO 7010 legend set included
- 20mm gland entries as standard
- Hinged gear tray & push fit terminal block
- Minimum 3 hour functionality in emergency mode
- Viewing distance 20m
- Facility for remote switching and non-maintained mode
- 235 lm when connected to mains, 150 lm when connected to battery

2



Code
EML3MISO

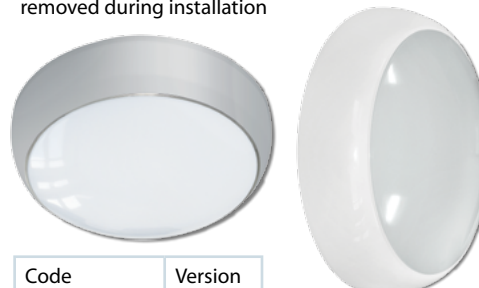
Signs directive, Non maintained & Self-Test versions available

LED CARINA CEILING/WALL LIGHT

17W | 3100/42006400K | 35,000 hrs | IP65

- Colour temperature selectable - easily set by a dip switch on the gear tray
- Full circular LED array
- Polycarbonate construction
- Plug in connector between the terminal block and the gear tray. Terminal block is located on the base, allowing for easy wiring and the gear tray to be removed during installation

3



Code	Version
CSLEDWH	White
CSLEDCR	Chrome

Emergency, on/off MW sensor, 10% Step Dim versions available

LED EM3 HANGING EXIT SIGN

2.3W | 6000K | 171 lm | 25,000 hrs

- Polycarbonate construction
- Remote connection box complete with adjustable length suspension cable (max 80cm)
- 3 hour maintained mode as standard which can also be configured for non-maintained or remote switched operation
- Viewing distance 29m
- Test button and LED charge light

4

Signs directive, & Self-Test versions available

Code
SIGNEM3ISO



LED EMERGENCY DOWNLIGHT

1.4W | IP20 | 32mmØ hole cut out

- Aluminium construction • Compact design
- Matt silver and white trims included
- Pre-wired for easy installation
- LED glows green in standby mode and super bright white light in the event of a mains failure
- Excellent alternative to a converted downlight
- Minimum 3 hour functionality in emergency mode
- 118 lumens in emergency mode



Self-Test version available

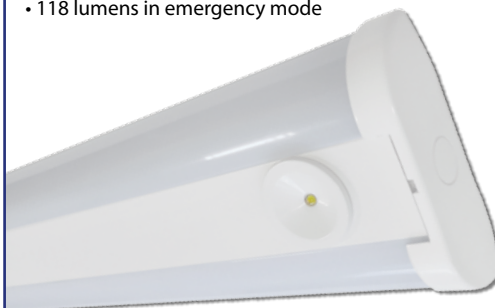
Code
LDLEM3

5

LED 5FT EMERGENCY FITTING

50W | 4000K | 5000 lm | 40,000 hrs | IP20

- Polycarbonate and aluminium construction
- Push terminal connections • 100 lm / W
- Pre-wired for easy installation
- LED glows green in standby mode and super bright white light in the event of a mains failure
- Minimum 3 hour functionality in emergency mode
- 118 lumens in emergency mode



Code
ELEGAN5EM3

6

LED EMERGENCY EXIT BOX

4W | 30,000 hrs | IP20

- Steel construction • Viewing distance 32m
- 3 hour maintained mode as standard which can also be configured for non maintained operation
- Facility for remote switching • 55 lm in mains mode
- Diffuser on base: for added downward illumination of exit path
- LED charge light • Battery test button



Code
EXIT3MLISO

Signs directive, & Self-Test versions available

7

LED TP(b) PANEL

36W | 30,000 hrs | Lifud driver

- Aluminium frame • 100 lm / W
- Ultra slim profile and a white trim finish to match the majority of T. bar ceilings
- CRI Ra:≥80: High CRI to minimise colour distortion of illuminated products
- Use SUSPACK to recess panel in the ceiling or suspend it from wires. Use SURFMK for surface mounting. Emergency battery packs available

8

Code	Version
600P3K	3000K / 3400 lm
600P4K	4000K / 3600 lm
600P5K	5000K / 3600 lm

TP(a), switch/ push dim, DALI dimmable versions available

