

Our Definition

Corporate Social Responsibility (CSR) is a concept whereby we recognise that our business operations and processes may have an impact on social, economic, and environmental issues outside of the workplace. It also demonstrates our commitment to ensuring and maintaining socially responsible behaviour in our organisation.

Our Policy

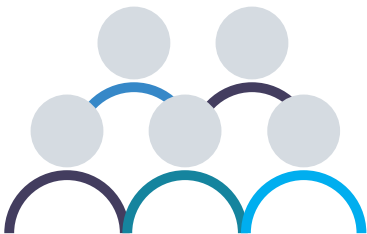
We are aware that the running of our businesses will, in many ways, affect our place of work, the community and the wider environment in which we operate. We believe that the way we run our businesses can and should make a positive difference in these areas and we aim to ensure that continued authentic efforts are made to achieve that. We have aligned our policy with the environmental, social and governance (ESG) criteria defined originally by the United Nations in the Principles for Responsible Investment in 2006, as well as our company objectives.

Our corporate social responsibilities are identifiable in the following areas:

Our People

We aim to

- Promote our company values and behaviours including respect, integrity, positivity
- Encourage personal development, education, and training
- Recognise success and loyalty
- Provide a safe and healthy working environment
- Reward our people fairly and equitably
- Promote inclusivity and equal opportunities
- Maintain an open and honest approach in all our communications
- Support mental and physical health and wellbeing
- Have robust processes to handle and store personal information



The Environment

We aim to

- Reduce the energy and water that we consume
- Limit the waste that we produce, especially paper waste
- Source energy from renewable sources, where possible
- Recycle the waste products that we cannot yet eliminate
- Consider the carbon impact of digital technology
- Travel less and, where unavoidable, travel sustainably



Our Suppliers

We require our suppliers to demonstrate

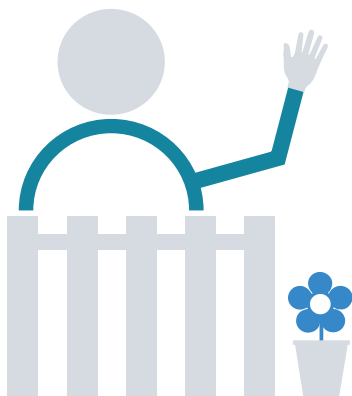
- Ethical working practices
- Good working conditions and respect for their people
- Excellent health, safety, environmental and quality standards
- Good management systems and respect for personal data
- Open and honest relationship



Local Community

We aim to

- Support local businesses
- Look after the local environment and minimise noise pollution
- Support local charitable causes
- Engage with local community initiatives



Our Customers

We aim to

- Share clear and honest information
- Provide proactive response to customer feedback
- Partner with our customers to help them to achieve their sustainability goals



Our Products

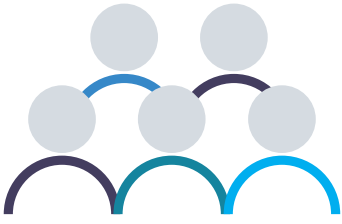
We aim to

- Work towards increased sustainability as materials and technology become available
- Produce reliable, long-lasting goods with replaceable parts where possible
- Use recycled and recyclable materials in our products and our packaging
- Minimise carbon miles and promote a sustainable Supply Chain

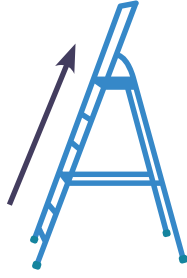


Our People. *We aim to*

Promote our company values and behaviours including respect, integrity & positivity



Encourage personal development, education and training



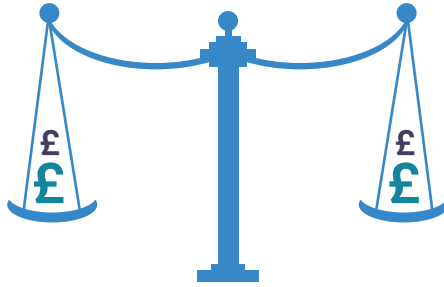
Recognise success and loyalty



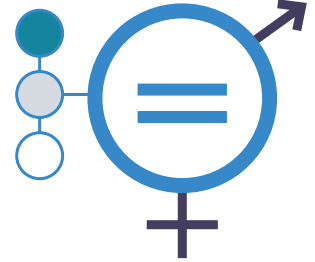
Provide a safe and healthy working environment



Reward our people fairly and equitably



Promote inclusivity and equal opportunities



Maintain an open and honest approach in all our communications



Support mental and physical health and wellbeing

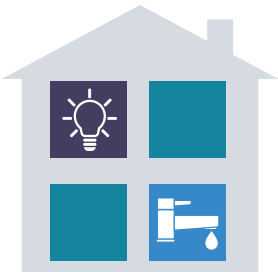


Have robust processes to handle and store personal information

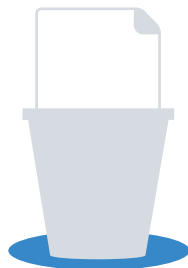


The Environment. *We aim to*

Reduce the energy and water that we consume



Limit the waste that we produce, especially paper waste



Source energy from renewable sources where possible



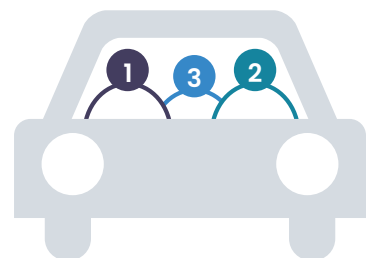
Recycle the waste products that we cannot yet eliminate



Consider the carbon impact of digital technology



Travel less and where unavoidable, travel sustainably

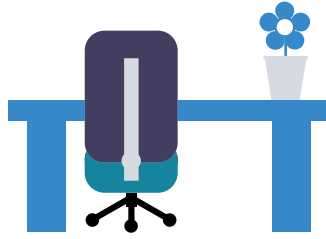


With Our Suppliers. *We require our suppliers to demonstrate*

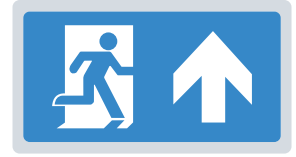
Ethical working practices



Good working conditions and respect for their people



Excellent health, safety, environmental and quality standards



Good management systems and respect for personal data

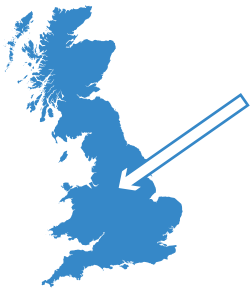


Open and honest relationship

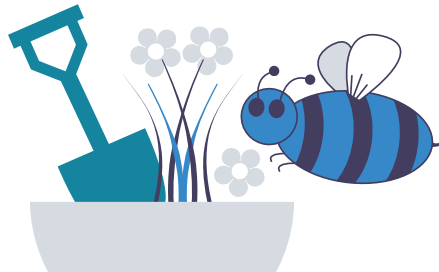


For Our Local Community. *We aim to*

Support local businesses



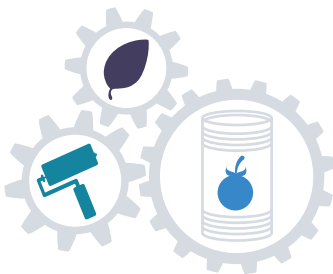
Look after the local environment and minimise noise pollution



Support local charitable causes

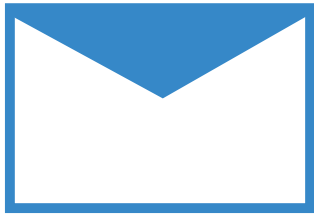


Engage with local community initiatives

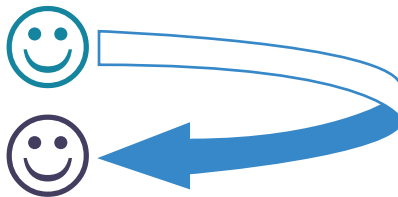


For Our Customers. *We aim to*

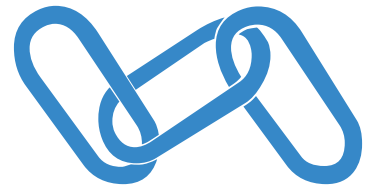
Share clear and honest information



Provide proactive response to customer feedback



Partner with our customers to help them to achieve their sustainability goals

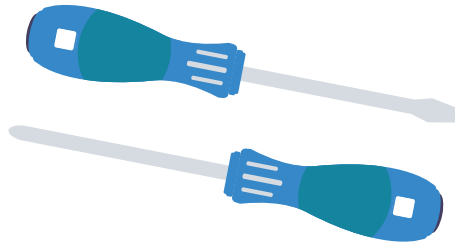


With Our Products. *We aim to*

Work towards increased sustainability as materials and new technologies become available



Produce reliable, long-lasting goods with replaceable parts where possible



Use recycled and recyclable materials in our products and our packaging



Minimise carbon miles and promote a sustainable Supply Chain



Please contact us for any further information on our policy

Tel: 01933 673 144

Email: enquiries@eterna-lighting.co.uk

www.eterna-lighting.co.uk/corporate-social-responsibility-policy