

eterna.

2025 UK Product Guide



Lighting | Heating | Electrical

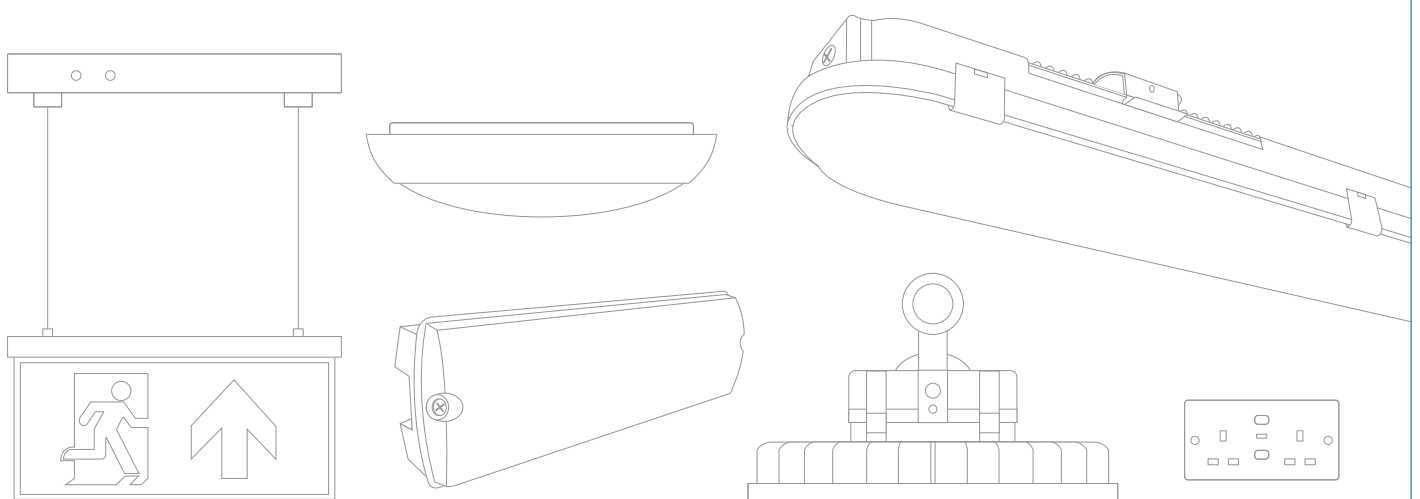
eterna.

Eterna has been a specialist supplier of lighting, heating, and electrical products to the UK and Irish trade markets since 1946. We provide wholesale-friendly, energy-efficient, and cost-effective solutions that meet the diverse needs of stock and project requirements across the residential, commercial, amenity, and industrial sectors.

This is not just about an updated logo; it's a fresh approach

We've not only refreshed our logo, which had been long overdue, but as a business in 2024, we've also made significant improvements in how we interact with our customers. We are committed to ensuring that the entire business is fully aligned with this new approach. Looking ahead to 2025, we anticipate exciting developments, including product updates and new product launches throughout the year.

Most importantly, you will be supported by our expanding external sales force, who will provide regular face-to-face contact. They will be backed by our dedicated internal teams, all working together to consistently exceed market expectations with our exceptional service levels.



Emergency Lighting	10-13
Bulkheads	10
Twinspots	10
Downlights	11
Exit Boxes	12
Exit Signs	13
Battery Packs	13
Ceiling & Wall	14-19
Chara	14
Sparrowhawk	14
Carina	15
Fresh Prince	16
Cassi	16
Chameleon	17
Uplighter	17
Well Glass	17-18
Wall Packs	18
Bulkheads	18-19
Panels	20
Capax	20
Linear Battens - Interior	20-21
Amplus	20
Verus	20
Elegance	21
LED Battens	21
Linear Battens - Exterior	22
Foris	22
Nano	22
Floodlighting	22-23
High Power	22
Robi	22
Standard	23
High Bay & Low Bay	23-24
Ara	23
Low Bay	23
High Bay	24
Downlights	24-25
CCT Commercial	24
Recessed Flat	24
Fire Rated	24-25
Converters	25

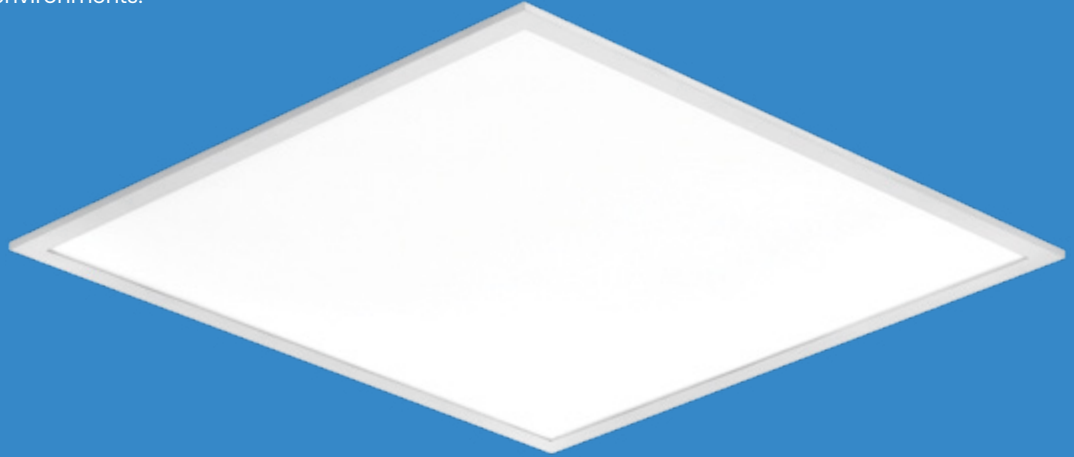
Bathroom Lighting	26-27
Shaver	26
Over Mirror	26
Mirror	26
Ceiling	26
Designer Style	27
Cabinet Lighting	27
Linkable	27
Super Flat	27
Surface/Recessed	27
Garden & Spotlighting	28-29
Spotlights	28-29
Bollard	29
Deck/Plinth	29
Bricklight	29
Lanterns	30
Aluminium	30
Half & Full	30
Hand Dryers & Heating	30-32
High Performance Hand Dryers	30
Convactor & Oil Heaters	31
Plinth	31
Downflow	31
Screen	31
Tubular	32
Lighting Controls	32-33
Push Switches	32
Photocells	32
Sensors & PIR Detectors	33
Accessories	34-35
Bells & Chimes	34
Sockets & RCDs	34
TRS Glands	34
Waterproof Boxes	34-35
Electrical Connectors	35
Lampholders	35
Ceiling Rose	35
Index	Back Page



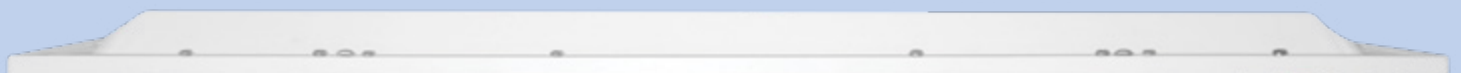
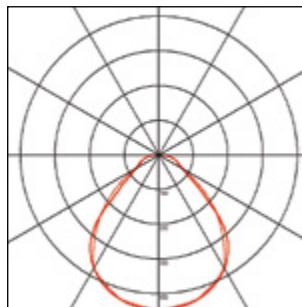
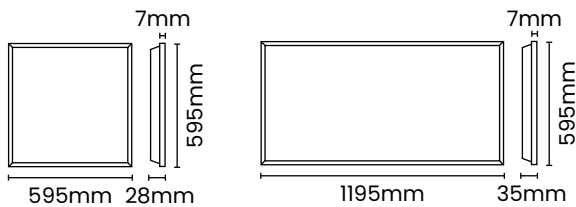
TP(b) UGR19 Power CCT Selectable Back Lit Panels

The Capax TP(b) UGR19 rated backlit panel delivers high levels of efficiency at 130 lm/w, achieving low glare and effective light distribution.

The dual power and three colour temperature selection within the panel offers significant versatility for a wide range of applications including commercial and educational environments.



Code	Version	Wattage	Lumens	CCT	IP	lm/W
E03CP60AC	600x600x28mm	25W/36W	3250 lm-4770 lm	3000K/4000K/6000K	IP44 (front)	130 lm/W
E03CP12AC	1200x600x35mm	40W/58W	5250 lm-7630 lm	3000K/4000K/6000K	IP44 (front)	130 lm/W
Accessories						
PANSUSKIT	2m cable length suspension pack					
SURFACEMK	Surface mounting kit (supplied in kit form) for 600x600 panel					
SURFMK12	Surface mounting kit (supplied in kit form) for 1200x600 panel					
EBPM3LI	18-60Vdc 150W Max LiFePO4 emergency battery pack					
Dali & 0-10V driver options available						



600x600 - 28mm backlit panel depth
1200x600 - 35mm backlit panel depth

Ara

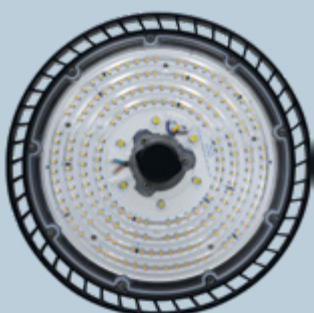
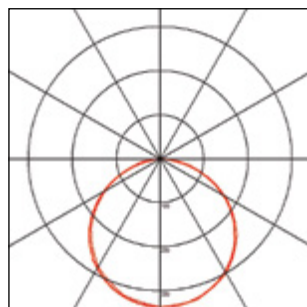
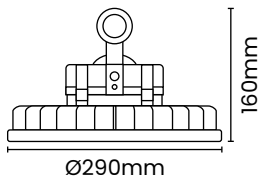
Ara 90W/120W/150W 0-10V Dimmable Highbay 120° 4000K

The Ara highbay offers a flexible solution delivering high levels of efficiency of up to 180 lm/w. As standard the Ara comes complete with a front plug in sensor port ready to use the plug in step dim Ara microwave sensor for additional energy savings or utilise the 0-10V connection for added control.

The three power options built in offer flexibility to suit many retrofit and new warehouse applications.



Code	Version	Wattage	Lumens	CCT	IP / IK	lm/W
E07ARA40	Ø173x160mm	90W/120W/150W	16200-27000 lm	4000K	IP65 / IK10	180 lm/W
Accessories						
E07ARL90	Ara 90° lens					
E07ARMW	Ara Plug in microwave sensor with corridor function					
E07ARRC	Ara microwave sensor remote controller					
E07ARES	Ara Self-Test LiFePO4 emergency pack					
E07ARSM	Ara surface mount bracket					



Amplus

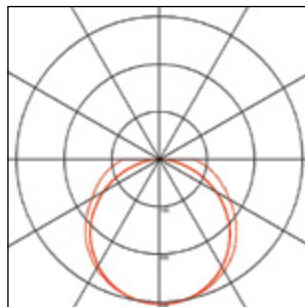
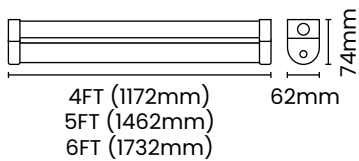
Wattage Switchable LED CCT Battens

The Amplus indoor batten range available in 4ft, 5ft & 6ft offers both wattage and colour temperature selection enabling 12 combinations into 1 fitting.

The Amplus is designed for simple and quick installation with a hinged front diffuser for easy access to the gear tray, with plug and play emergency and microwave sensor accessories to suit multiple applications.



Code	Version	Wattage	Lumens	CCT	IP / IK	lm/W
E04AP4AC	4ft - 1172x74x62mm	21W/27W/32W/38W	3150 lm-5700 lm	3000K/4000K/6000K	IP20 / IK08	150 lm/W
E04AP5AC	5ft - 1462x74x62mm	29W/36W/44W/52W	4350 lm-7800 lm	3000K/4000K/6000K	IP20 / IK08	150 lm/W
E04AP6AC	6ft - 1732x74x62mm	33W/42W/51W/60W	4950 lm-9000 lm	3000K/4000K/6000K	IP20 / IK08	150 lm/W
Plug In Accessories						
E04APFSEM	3W LiFePO4 emergency pack					
E04APFSMS	On/off microwave sensor					



Verus

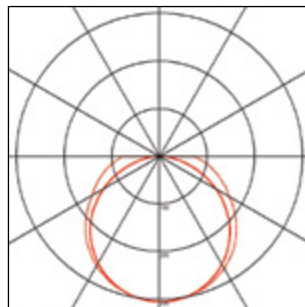
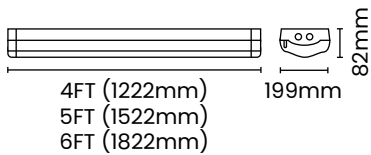
Verus Wattage Switchable LED CCT Linear

The Verus range is available in 4ft, 5ft & 6ft offering both wattage and colour temperature selection.

The Verus comes complete with 20mm conduit entry points at both ends and BESA fixing points to the rear. The plug and play emergency and microwave sensor enable further flexibility to suit varying requirements on site.



Code	Version	Wattage	Lumens	CCT	IP	lm/W
E04VS4AC	4ft - 1222x82x199mm	21W/27W/32W/38W	2625 lm-4750 lm	3000K/4000K/6000K	IP20 / IK08	125 lm/W
E04VS5AC	5ft - 1522x82x199mm	32W/41W/50W/58W	4000 lm-7250 lm	3000K/4000K/6000K	IP20 / IK08	125 lm/W
E04VS6AC	6ft - 1822x82x199mm	36W/46W/55W/65W	4500 lm-8125 lm	3000K/4000K/6000K	IP20 / IK08	125 lm/W
Plug In Accessories						
E04VSEM	3W LiFePO4 emergency pack					
E04VSMS	On/off microwave sensor					



Foris

Wattage Switchable LED CCT Anti-Corrosive Battens

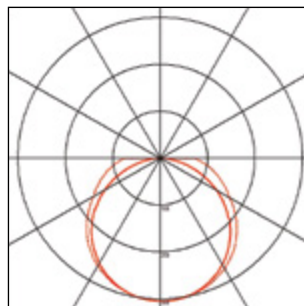
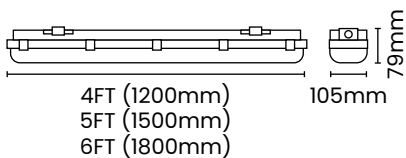
The Foris anti-corrosive range, available in 4ft, 5ft & 6ft offers both wattage and colour temperature selection enabling 12 combinations into 1 fitting.

The Foris comes complete with pre-drilled 20mm conduit entry points (capped), stainless steel retaining clips that require a flat head tool to gain access and flexible bracket sliders to suit retrofit positioning.

The plug and play emergency and microwave sensor enables further flexibility to suit varying requirements on site.



Code	Version	Wattage	Lumens	CCT	IP / IK	lm/W
E05FS4AC	4ft - 1200x79x105mm	17W/21W/26W/30W	2550 lm-4500 lm	3000K/4000K/6000K	IP65 / IK08	150 lm/W
E05FS5AC	5ft - 1500x79x105mm	28W/35W/43W/50W	4200 lm-7500 lm	3000K/4000K/6000K	IP65 / IK08	150 lm/W
E05FS6AC	6ft - 1800x79x105mm	31W/40W/48W/57W	4650 lm-8550 lm	3000K/4000K/6000K	IP65 / IK08	150 lm/W
Plug In Accessories						
E04APFSEM	3W LiFePO4 emergency pack					
E04APFSMS	On/off microwave sensor					



Robi

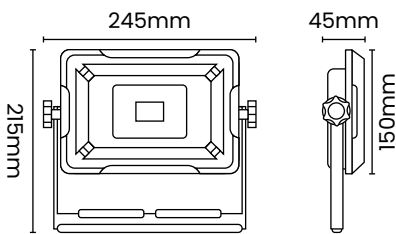
Robi 20W 2000lm Rechargeable Floodlight 4000K

Robi 20 is a compact and efficient portable rechargeable floodlight able to offer up to 2000 lumens with a fully adjustable bracket for flexibility in a number of internal and external applications.

Robi 20 features a useful charge status indicator and the 50% power adjustment allows you to extend duration from 3 hours to over 5 hours.



Code	Version	Wattage	Lumens	CCT	IP / IK
E06RB2040	245x215x45mm	20W	2000 lm	4000K	IP54 / IK05





Emergency LED Bulkheads

IP65 | 20m viewing distance | 5 year warranty

Code	Version	Wattage	Lumens	CCT	Box Qty	Notes
EMLED3M	Maintained + Signs Directive legend set + Ni-Cd battery	7W	320/170 lm	6000K	12	
EMLED3NM	Non-maintained + Signs Directive legend set + Ni-Cd battery	2W	170 lm	6000K	12	
EML3NMISO	Non-maintained + ISO 7010 legend set + Ni-Cd battery	2W	200 lm	6000K	12	
KEM3BULKLI	Maintained + ISO 7010 legend set + LiFePO4 battery	4W	270/130 lm	6400K	10	
SEMEM3	Self-Test maintained + ISO 7010 legend set + LiFePO4 battery	4W	270/130 lm	6400K	10	
Accessories						
BULKFRAME	White bulkhead frame				12	
ISOLGDSET	ISO 7010 legend set				12	
LGDSET	Signs Directive legend set				12	
EB4	Replacement battery for EM range				1	
EB19	Replacement battery for SEMEM3				1	
EB17	Replacement battery for KEM3BULKLI				1	



Emergency LED Twinspots

5 year warranty

Code	Version	Wattage	Lumens	CCT	Box Qty	Notes
LEDTWNSPOT	IP65 + Ni-Cd battery	Twin 3W	441 lm	6000K	6	
TSPOTLIP20	IP20 + Ni-Cd battery	3.4W	405 lm	6000K	6	
KTWINSPLI	IP20 + LiFePO4 battery	2W	420 lm	6300K	20	
VECOTWINSP	IP20 + Ni-Cd battery	2W	405 lm	6300K	20	
SETSPOT	Self-Test IP20 + LiFePO4 battery	4.5W	437 lm	6000K	20	
Accessories						
EB3	Replacement battery for LEDTWNSPOT				1	
EB16	Replacement battery for TSPOTLIP20				1	
EB18	Replacement battery for KTWINSPLI & SETSPOT				1	
EB13	Replacement battery for VECOTWINSP				1	



Emergency Ø 45mm LED Emergency Downlights

Matt silver and white bezels | Pre-wired
Hole cut out size: Ø 32mm | 5 year warranty

Code	Version	Wattage	Lumens	Box Qty	Notes
LDLEM3	Ni-Cd battery	1.4W	118 lm	20	
SELDLEM3	Self-Test + Ni-Cd battery	1.4W	118 lm	20	
Accessories					
EB2	Replacement battery			1	



Emergency Ø 60mm LED Emergency Downlight

White, matt silver and black bezels | Pre-wired
Hole cut out size: Ø 50mm | 5 year warranty

Code	Version	Wattage	Lumens	Box Qty	Notes
LDLEM3LI	LiFePO4 battery	2W	160 lm	40	
Accessories					
EB19	Replacement battery			1	



Surface Mount LED Emergency Downlight

Supplied with open area lens | 5 year warranty

Code	Version	Wattage	Lumens	Box Qty	Notes
SESMDLEM3	Self-Test + Ni-Cd battery	3W	150 lm	20	
Accessories					
SESMDCL	Corridor lens			20	
EB15	Replacement battery			1	

Battery Replacement Service

www.eterna-lighting.co.uk/battery-replacement-service

IMPORTANT OPERATIONAL CHECKS TO KEEP YOUR FITTING WORKING

Periodic testing should be carried out to ensure emergency lighting is operating correctly. For the period of the test, isolate the power supply by operation of a key switch, or other isolation device. At the end of the test, power should be restored and all indicator lamps checked

DAILY: Visual inspection of the battery charge LED

EACH MONTH: Isolate the power supply for a period sufficient to ensure that each lamp is illuminated. Endorse the test record form supplied

ONCE EACH YEAR: Isolate the power supply and check that the light is still illuminated after 3 hours. Endorse the test record form

BATTERY REPLACEMENT

If after routine operation, the lamp does not remain lit for the three hour period, a new battery pack may be required

- Switch off the electricity at the mains, both switched and permanent supply
 - Allow batteries to fully discharge then reconnect to supply and allow to charge for 24 hours
 - Test again for 3 hours, if light does not remain lit change the battery pack
 - Check install guides for procedure on changing the battery
- Please note that in the unlikely event your new fitting is supplied with a faulty battery, we will replace the battery free of charge subject to our terms and conditions



Emergency LED Exit Box

32m viewing distance | 5 year warranty

Code	Version	Wattage	Dimensions	Box Qty	Notes
EXIT3MLED	Maintained + Signs Directive down arrow legend + Ni-Cd battery	4W	390x192x60mm	6	
Accessories					
EBLGD	Signs Directive left arrow legend			100	
EBLGDR	Signs Directive right arrow legend			100	
EBLGDU	Signs Directive up arrow legend			100	
ISOEBLGD	ISO 7010 left arrow legend			100	
ISOEBLGDR	ISO 7010 right arrow legend			100	
ISOEBLGDU	ISO 7010 up arrow legend			100	
ISOEBLGDD	ISO 7010 down arrow legend			100	
EB4	Replacement battery			1	



Compact Emergency LED Exit Box

29m viewing distance | 5 year warranty

Code	Version	Wattage	Dimensions	Box Qty	Notes
KEXIT3MLI	Maintained + ISO 7010 up arrow legend + LiFePO4 battery	4W	300x180x40mm	20	
Accessories					
VECOISOD	ISO 7010 down arrow legend			20	
VECOISOL	ISO 7010 left arrow legend			20	
VECOISOR	ISO 7010 right arrow legend			20	
EB17	Replacement battery			1	



Slim Emergency LED Exit Box

33m viewing distance | 5 year warranty

Code	Version	Wattage	Dimensions	Box Qty	Notes
EBLSLIMM	Maintained + full set Signs Directive legends + Ni-Mh battery	5.2W	393x193x27mm	10	
Accessories					
EB7	Replacement battery			1	

The full **Self-Test** guide online: www.eterna-lighting.co.uk/self-test



Emergency LED Multi-Fixing Exit Sign

30m viewing distance | 5 year warranty
Ceiling mounting, end mounting, wall mounting and suspended

Code	Version	Wattage	Dimensions	Box Qty	Notes
EXITMMO	ISO 7010 up arrow legend + Ni-Cd battery	2.8W	345x235mm x base 42mm	6	
Accessories					
EXITREC	White recessed mounting kit			25	
ISOMMOLR	ISO 7010 left/right arrow legend			100	
ISOMMOD	ISO 7010 down arrow legend			100	
ISOMMOLRD	ISO 7010 left/right down arrow legend			100	
EMMOUP	Signs Directive up arrow legend			100	
EMMOD	Signs Directive down arrow legend			100	
EMMOLR	Signs Directive left/right arrow legend			100	
EB8	Replacement battery			1	



Emergency LED Hanging Exit Sign Light

29m viewing distance | 5 year warranty
Adjustable length suspension cable (max 800mm)

Code	Version	Wattage	Dimensions	Box Qty	Notes
SIGNEDEM3	Signs Directive down arrow legend + Ni-Cd battery	2.3W	Base 340x45x55mm	6	
SESIGNLEM3	Self-Test + ISO 7010 up arrow legend + Ni-Cd battery	2.3W	Base 340x45x55mm	6	
Accessories					
SIGNLGD	Signs Directive left/right arrow legend			100	
SIGNLGDUP	Signs Directive up arrow legend			100	
ISOSIGNUP	ISO 7010 up arrow legend			100	
ISOSIGND	ISO 7010 down arrow legend			100	
ISOSIGNLR	ISO 7010 left/right arrow legend			100	
EB8	Replacement battery			1	



Emergency Battery Packs

Code	Version	Wattage	Box Qty	Notes
EBPM3	Ni-Cd battery	10-60V 100W Max	1	
SEEBPM3	Self-Test + Ni-Cd battery	10-60V 100W Max	1	
EBPM3LI	LiFePO4 battery	18-60V 150W Max	40	
Accessories				
EB5	Replacement battery for EMPM3/SEEBPM3		1	
EB20	Replacement battery for EBPM3LI		1	



Chara

Power & CCT Selectable LED Ceiling/Wall Lights

Ø 315mm | IP65 | IK10 | Full white trim | BESA box mounting | 5 year warranty

Code	Version	Wattage	Lumens	CCT	Box Qty	Notes
CHA18STD	Standard	9W/14W/18W	1000 lm-2130 lm	3000K/4400K/6500K	10	
CHA18MW	MW sensor	9W/14W/18W	1000 lm-2130 lm	3000K/4400K/6500K	10	
CHA18EM3	LiFePO4 EM3	9W/14W/18W	1000 lm-2130 lm	3000K/4400K/6500K	10	
CHA18MW3	MW sensor + LiFePO4 EM3	9W/14W/18W	1000 lm-2130 lm	3000K/4400K/6500K	10	
CHA18SD	Step Dim MW sensor	9W/14W/18W	1000 lm-2130 lm	3000K/4400K/6500K	10	
CHA18SDEM3	Step Dim MW sensor + LiFePO4 EM3	9W/14W/18W	1000 lm-2130 lm	3000K/4400K/6500K	10	

Accessories

CHAEYEBK	Black eyelid trim				1	
CHAEYEGY	Dark grey eyelid trim				1	
CHAEYEWB	White eyelid trim				1	
CHAFULLBK	Black full trim				1	
CHAFULLCR	Chrome full trim				1	
EB11	Replacement battery				1	



Sparrowhawk

LED Amenity Ceiling/Wall Lights

Ø 305mm | IP66 | IK08 | 5 year warranty

Code	Version	Wattage	Lumens	CCT	Box Qty	Notes
SHFULLBK	Black Full	11W	1150 lm	4000K	10	
SHFULLWH	White Full	11W	1150 lm	4000K	10	
SHEYEBK	Black Eyelid	11W	790 lm	4000K	10	
SHEYEWB	White Eyelid	11W	790 lm	4000K	10	
SHFULLMWBK	Black Full + MW Sensor	11W	1150 lm	4000K	10	
SHFULLMWWH	White Full + MW Sensor	11W	1150 lm	4000K	10	
SHEYEMWBK	Black Eyelid + MW Sensor	11W	790 lm	4000K	10	

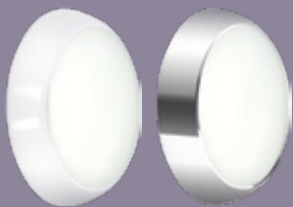


Sparrowhawk

LED Mini Amenity Ceiling/Wall Lights

Ø 215mm | IP66 | IK08 | 5 year warranty

Code	Version	Wattage	Lumens	CCT	Box Qty	Notes
MINIFULLWH	White Full	6W	530 lm	4200K	10	
MINIEYEBK	Black Eyelid	6W	445 lm	4200K	10	



Carina

CCT Selectable LED Ceiling/Wall Lights

Ø 325mm | IP65 | BESA box mounting | 5 year warranty

Code	Version	Wattage	Lumens	CCT	Box Qty	Notes
CSLEDCR	Chrome standard	17W	1250 lm-1350 lm	3100K/4200K/6400K	8	
CSLEDWH	White standard	17W	1250 lm-1350 lm	3100K/4200K/6400K	8	
CSLEDCREM3	Chrome LiFePO4 EM3	17W	1250 lm-1350 lm	3100K/4200K/6400K	8	
CSLEDWHEM3	White LiFePO4 EM3	17W	1250 lm-1350 lm	3100K/4200K/6400K	8	
MSCSLEDCR	Chrome MW sensor	17W	1250 lm-1350 lm	3100K/4200K/6400K	8	
MSCSLEDWH	White MW sensor	17W	1250 lm-1350 lm	3100K/4200K/6400K	8	
MSCSLCREM3	Chrome MW sensor + LiFePO4 EM3	17W	1250 lm-1350 lm	3100K/4200K/6400K	8	
MSCSLWHEM3	White MW sensor + LiFePO4 EM3	17W	1250 lm-1350 lm	3100K/4200K/6400K	8	
SDCSLEDCR	Chrome Step Dim MW sensor	17W	1250 lm-1350 lm	3100K/4200K/6400K	8	
SDCSLCREM3	Chrome Step Dim MW sensor + LiFePO4 EM3	17W	1250 lm-1350 lm	3100K/4200K/6400K	8	
SDCSLWHEM3	White Step Dim MW sensor + LiFePO4 EM3	17W	1250 lm-1350 lm	3100K/4200K/6400K	8	
Accessories						
EB11	Replacement battery				1	



Carina

LED Ceiling/Wall Lights

Ø 325mm | IP65 | 5 year warranty

Code	Version	Wattage	Lumens	CCT	Box Qty	Notes
CFLEDWHSC	Standard	17W	1843 lm	4000K	8	
MSLEDWHSC	MW Sensor	17W	1843 lm	4000K	8	
CFLWHEM3SC	LiFePO4 EM3	17W	1843 lm	4000K	8	
MSLWHEM3SC	MW Sensor + LiFePO4	17W	1843 lm	4000K	8	
Accessories						
EB11	Replacement battery				1	



Carina

Mini LED Ceiling/Wall Lights

Ø 273mm | IP65 | 5 year warranty

Code	Version	Wattage	Lumens	CCT	Box Qty	Notes
CFLEDMINSC	Standard	9W	875 lm	4200K	10	
MSLEDMINSC	MW Sensor	9W	875 lm	4200K	10	



Fresh Prince V3

Power & CCT Utility LED Ceiling/Wall Lights

IP65 | IK10 | BESA box mounting | 5 year warranty | 20mm conduit entries
 Ø 288mm | SQU: 255x255mm

Code	Version	Wattage	Lumens	CCT	Box Qty	Notes
OPCIRSTD	Circular Opal Standard	9W/14W/18W	1090 lm-2190 lm	3000K/4400K/6500K	8	
OPCIRMW	Circular Opal Step Dim MW Sensor	9W/14W/18W	1090 lm-2190 lm	3000K/4400K/6500K	8	
OPCIREM3	Circular Opal LiFePO4 EM3	9W/14W/18W	1090 lm-2190 lm	3000K/4400K/6500K	8	
OPCIRMW3	Circular Opal Step Dim MW Sensor + LiFePO4 EM3	9W/14W/18W	1090 lm-2190 lm	3000K/4400K/6500K	8	
PRCIRSTD	Circular Prismatic Standard	9W/14W/18W	1180 lm-2270 lm	3100K/4200K/6400K	8	
PRCIRMW	Circular Prismatic Step Dim MW Sensor	9W/14W/18W	1180 lm-2270 lm	3100K/4200K/6400K	8	
PRCIREM3	Circular Prismatic LiFePO4 EM3	9W/14W/18W	1180 lm-2270 lm	3100K/4200K/6400K	8	
PRCIRMW3	Circular Prismatic Step Dim MW Sensor + LiFePO4 EM3	9W/14W/18W	1180 lm-2270 lm	3100K/4200K/6400K	8	
OPSQSTD	Square Opal Standard	9W/14W/18W	1080 lm-2200 lm	3100K/4200K/6400K	8	
OPSQMW	Square Opal Step Dim MW Sensor	9W/14W/18W	1080 lm-2200 lm	3100K/4200K/6400K	8	
OPSQEM3	Square Opal LiFePO4 EM3	9W/14W/18W	1080 lm-2200 lm	3100K/4200K/6400K	8	
OPSQMW3	Square Opal Step Dim MW Sensor + LiFePO4 EM3	9W/14W/18W	1080 lm-2200 lm	3100K/4200K/6400K	8	
PRSQSTD	Square Prismatic Standard	9W/14W/18W	1150 lm-2360 lm	3100K/4200K/6400K	8	
PRSQMW	Square Prismatic Step Dim MW Sensor	9W/14W/18W	1150 lm-2360 lm	3100K/4200K/6400K	8	
PRSQEM3	Square Prismatic LiFePO4 EM3	9W/14W/18W	1150 lm-2360 lm	3100K/4200K/6400K	8	
PRSQMW3	Square Prismatic Step Dim MW Sensor + LiFePO4 EM3	9W/14W/18W	1150 lm-2360 lm	3100K/4200K/6400K	8	
Accessories						
EB11	Replacement battery				1	



Cassi

LED Ceiling/Wall Lights

8W - Ø173mm | 14W - Ø228mm | IP54 | IK08 | 5 year warranty

Code	Version	Wattage	Lumens	CCT	Box Qty	Notes
KCAS8WHFL	White full diffuser	8W	855 lm	4000K	40	
KCAS8BKFL	Black full diffuser	8W	855 lm	4000K	40	
KCAS14WHFL	White full diffuser	14W	1480 lm	4000K	20	
KCAS14BKFL	Black full diffuser	14W	1480 lm	4000K	20	



Chameleon

Modular LED Ceiling/Wall Lights

Ø 300mm | IP65 | IK08 | BESA box mounting (CO18 range only) | 5 year warranty
20mm conduit entries

Code	Version	Wattage	Lumens	CCT	Box Qty	Notes
CO18	Standard	18W	1580 lm-1640 lm	3100K/4200K/6400K	10	
CO18EM3	LiFePO4 EM3	18W	1580 lm-1640 lm	3100K/4200K/6400K	10	
CO18MW	MW Sensor	18W	1580 lm-1640 lm	3100K/4200K/6400K	10	
CO18MW3	MW Sensor + LiFePO4 EM3	18W	1580 lm-1640 lm	3100K/4200K/6400K	10	
CO18PC	Photocell	18W	1580 lm-1640 lm	3100K/4200K/6400K	10	
CO12	Standard	12W	1180 lm-1290 lm	3100K/4200K/6400K	10	
CO12EM3	LiFePO4 EM3	12W	1180 lm-1290 lm	3100K/4200K/6400K	10	
CO12MW	MW Sensor	12W	1180 lm-1290 lm	3100K/4200K/6400K	10	
CO12MW3	MW Sensor + LiFePO4 EM3	12W	1180 lm-1290 lm	3100K/4200K/6400K	10	
CO12PC	Photocell	12W	1180 lm-1290 lm	3100K/4200K/6400K	10	
CO12SCPC	Photocell	12W	1200 lm	4200K	10	

Accessories

GRILLWH	White grill trim				50	
GRILLBK	Black grill trim				50	
EYEWLH	White eyelid trim				50	
EYEBK	Black eyelid trim				50	
CIRCWH	White full trim				50	
CIRCBK	Black full trim				50	
CIRCCR	Chrome full trim				50	
CPRIS	Prismatic diffuser				50	
EB11	Replacement battery				1	



B22 Ceramic Uplighter

IP20 | Plaster body | 1 year warranty
Pre-wired with 300mm mains lead

Code	Wattage	Box Qty	Notes
CW3021	100W Max	6	



Polycarbonate LED Well Glass

IP65 | 5 year warranty
Bracket included for optional corner mounting

Code	Version	Wattage	Lumens	CCT	Box Qty	Notes
WELLWHSTD	White standard	10W	660 lm	4000K	6	
WELLBKSTD	Black standard	10W	660 lm	4000K	6	
WELLWHPIR	White 120° PIR	10W	660 lm	4000K	6	
WELLBKPIR	Black 120° PIR	10W	660 lm	4000K	6	



LED Well Glass

IP65 | 5 year warranty | LED E27 lamp included
Bracket included for optional corner mounting

Code	Version	Wattage	Lumens	CCT	Box Qty	Notes
WGLEDBK	White standard	8.9W	810 lm	2700K	4	
WGLEDWH	Black standard	8.9W	810 lm	2700K	4	
Accessories						
WELLDIFF	Replacement polycarbonate diffuser				1	



LED CCT Slim Wallpacks

IP65 | 5 year warranty
20mm conduit entries

Code	Version	Wattage	Lumens	CCT	Box Qty	Notes
WPCSBK	Black	17W	1500 lm-1550 lm	3000K/4000K/6000K	10	
WPCSWH	White	17W	1500 lm-1550 lm	3000K/4000K/6000K	10	
WPCSBKPC	Black Photocell	17W	1500 lm-1550 lm	3000K/4000K/6000K	10	
WPCSWHPC	White Photocell	17W	1500 lm-1550 lm	3000K/4000K/6000K	10	



Tough LED Integrated Wallpacks

IP65 | IK08 | 5 year warranty
20mm knockouts side and rear

Code	Version	Wattage	Lumens	CCT	Box Qty	Notes
WPACKLED	Standard	30W	2000 lm	4200K	4	
WPACKLEDPC	Photocell	30W	2000 lm	4200K	4	



Tough LED Bulkheads with Opal Diffuser

IP65 | 5 year warranty
Cable channel on reverse of fitting with 20mm knockout conduit entries

Code	Version	Wattage	Lumens	CCT	Box Qty	Notes
BULKLED	Standard	12W	1250 lm	6500K	12	
BULKLEDPC	Photocell	12W	1250 lm	6500K	12	



LED CCT Bulkhead with 120° PIR

IP65 | IK05 | 5 year warranty

Code	Wattage	Lumens	CCT	Box Qty	Notes
BHPIRCS	10W	1166 lm-1232 lm	3000K/4000K/6000K	10	



LED Bulkhead with Opal Diffuser

IP65 | 5 year warranty
3x 20mm knock-out conduit entry positions

Code	Version	Wattage	Lumens	CCT	Box Qty	Notes
KRECBOPL	Standard	10W	1045 lm	4000K	10	
KRECBOPLPC	Photocell	10W	1045 lm	4000K	10	



Bulkhead with E27 Lampholder

IP65 | IK08 | 1 year warranty
3x 20mm knock-out conduit entry positions

Code	Wattage	Box Qty	Notes
BH100E27	100W Max	10	



B22 Bulkhead with 120° PIR

IP44 | 1 year warranty

Code	Wattage	Box Qty	Notes
PIR80BK	60W Max	20	



LED Bulkheads

IP44 | 5 year warranty

Code	Version	Wattage	Lumens	CCT	Box Qty	Notes
BLEDBK	Standard	7W	500 lm	3100K	10	
BLEDPIRBK	120° PIR	7W	500 lm	3100K	10	



LED Atom Bulkhead

IP65 | 5 year warranty
3 x 20mm conduit entries

Code	Wattage	Lumens	CCT	Box Qty	Notes
ATOM5	6W	450 lm	4200K	20	

Downloadable guides available online: www.eterna-lighting.co.uk/guides
IP Rating | IK Rating | Conduit Entry | Lighting Controls | Wiring Basics | CCT | Fire Rated | LED | & More



Capax

TP(b) UGR19 Power CCT Selectable Back Lit Panels

IP44 (front) | IP20 (back) | 5 year warranty

Code	Version	Wattage	Lumens	CCT	Box Qty	Notes
E03CP60AC	600x600x28mm	25W/36W	3250 lm-4770 lm	3000K/4000K/6000K	6	
E03CP12AC	1200x600x35mm	40W/58W	5250 lm-7630 lm	3000K/4000K/6000K	4	
Plug In Accessories						
PANSUSKIT	2m cable length suspension pack				100	
SURFACEMK	Surface mounting kit (supplied in kit form) for 600x600 panel				20	
SURFMK12	Surface mounting kit (supplied in kit form) for 1200x600 panel				20	
EBPM3LI	18-60Vdc 150W Max LiFePO4 emergency battery pack				40	
Dali & 0-10V driver options available						



Amplus

Wattage Switchable LED CCT Battens

IK08 | 150 lm/W | 20mm conduit entry and BESA fixing points | 5 Year Warranty

Code	Version	Wattage	Lumens	CCT	Box Qty	Notes
E04AP4AC	4ft - 1172x74x62mm	21W/27W/32W/38W	3150 lm-5700 lm	3000K/4000K/6000K	6	
E04AP5AC	5ft - 1462x74x62mm	29W/36W/44W/52W	4350 lm-7800 lm	3000K/4000K/6000K	6	
E04AP6AC	6ft - 1732x74x62mm	33W/42W/51W/60W	4950 lm-9000 lm	3000K/4000K/6000K	6	
Plug In Accessories						
E04APFSEM	3W LiFePO4 emergency pack				40	
E04APFSMS	On/off microwave sensor				100	



Verus

Wattage Switchable LED CCT Linears

IK06 | 125 lm/W | 20mm conduit entry and BESA fixing points | 5 Year Warranty

Code	Version	Wattage	Lumens	CCT	Box Qty	Notes
E04VS4AC	4ft - 1222x82x199mm	21W/27W/32W/38W	2625 lm-4750 lm	3000K/4000K/6000K	4	
E04VS5AC	5ft - 1522x82x199mm	32W/41W/50W/58W	4000 lm-7250 lm	3000K/4000K/6000K	4	
E04VS6AC	6ft - 1822x82x199mm	36W/46W/55W/65W	4500 lm-8125 lm	3000K/4000K/6000K	4	
Plug In Accessories						
E04VSEM	3W LiFePO4 emergency pack				40	
E04VSMS	On/off microwave sensor				100	



LED 5ft Twin Slimline Ceiling Fittings

1503x127x43mm | IP20 | 100 lm/W | 5 year warranty

Code	Version	Wattage	Lumens	CCT	Box Qty	Notes
ELEGANCE5	Standard	50W	5000 lm	4000K	6	
ELEGAN5EM3	EM3 + Ni-Cd battery	50W	5000 lm	4000K	6	
Accessories						
ELESUSPACK	1m cable suspension pack				100	
EB2	Replacement battery				1	



S2 Classic Design LED Battens

20mm conduit entry and BESA fixing points | 5 Year Warranty
4ft - 1170x73x60mm | 5ft - 1460x73x60mm | 6ft - 1730x73x60mm

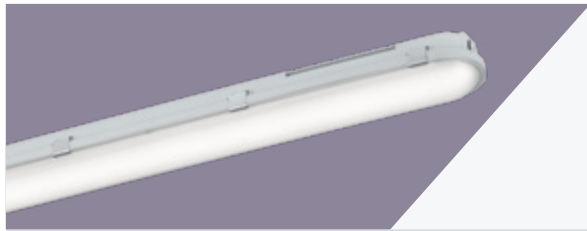
Code	Version	Wattage	Lumens	CCT	Box Qty	Notes
BATLED4FT	4ft	23W	2950 lm	4200K	6	
BATLED5FT	5ft	38W	4750 lm	4200K	6	
BATLED6FT	6ft	48W	6050 lm	4200K	6	
BATLED5HO	5ft High Output	60W	7550 lm	4200K	6	
BATLED6HO	6ft High Output	65W	8450 lm	4200K	6	
BATL4FTEM3	4ft + LiFePO4 EM3	23W	2950 lm	4200K	6	
BATL5FTEM3	5ft + LiFePO4 EM3	38W	4750 lm	4200K	6	
BATL6FTEM3	6ft + LiFePO4 EM3	48W	6050 lm	4200K	6	
BATL5HOEM3	5ft High Output + LiFePO4 EM3	60W	7550 lm	4200K	6	
BATL6HOEM3	6ft High Output + LiFePO4 EM3	65W	8450 lm	4200K	6	
Accessories						
BATLEDPIR	Add-on 100° PIR sensor Detection range 3-6 metres Time-on adjustable: 30 secs, 3 mins, 5 mins, 8 mins Night & day or night only options selectable				100	
EB19	Replacement battery				1	



LED Battens

IP20 | Up to 106 lm/W | 5 year warranty | 20mm conduit entry and BESA fixing points
4ft - 1185x67x58mm | 5ft - 1480x67x58mm | 6ft - 1750x67x58mm

Code	Version	Wattage	Lumens	CCT	Box Qty	Notes
VECOBAT4FT	4ft	18W	1800 lm	4000K	6	
VECOBAT5FT	5ft	24W	2400 lm	4000K	6	
VECOBAT6FT	6ft	32W	3400 lm	4000K	6	
VECOBAT5HO	5ft High Output	48W	4000 lm	4000K	6	
VECOBAT6HO	6ft High Output	64W	5200 lm	4000K	6	



Foris

Wattage Switchable LED CCT Anti-Corrosive Battens

IP65 | IK08 | 150 lm/W | Ends pre-drilled and capped | 5 Year Warranty
Supplied with IP cable grommet, 2 x ceiling brackets & suspension hooks

Code	Version	Wattage	Lumens	CCT	Box Qty	Notes
E05FS4AC	4ft - 1200x79x105mm	17W/21W/26W/30W	2550 lm-4500 lm	3000K/4000K/6000K	6	
E05FS5AC	5ft - 1500x79x105mm	28W/35W/43W/50W	4200 lm-7500 lm	3000K/4000K/6000K	6	
E05FS6AC	6ft - 1800x79x105mm	31W/40W/48W/57W	4650 lm-8550 lm	3000K/4000K/6000K	6	

Plug In Accessories

E04APFSEM	3W LiFePO4 emergency pack				40	
E04APFSMS	On/off microwave sensor				100	



Nano Utility LED Battens

IP65 | 5 Year Warranty
Cable gland included

Code	Version	Wattage	Lumens	CCT	Box Qty	Notes
KNANOIP2FT	2ft - 600x38x48mm	15W	1800 lm	4000K	20	
KNANOIP4FT	4ft - 1200x38x48mm	20W	2550 lm	4000K	20	
KNANOIP5FT	5ft - 1500x38x48mm	25W	2870 lm	4000K	20	

Floodlighting



Tough Commercial High Power LED Floodlights

IP65 | Pre-wired with 80cm of cable | Over 108 lm/W | 5 year warranty

Code	Version	Wattage	Lumens	CCT	Box Qty	Notes
FLOOD50W	184x195x66mm	50W	5400 lm	4000K	6	
FLOOD80W	234x248x70mm	80W	9400 lm	4000K	4	
FLOOD120W	314x328x82mm	120W	14500 lm	4000K	1	
FLOOD200W	422x475x113mm	200W	23000 lm	4000K	1	



Robi

Robi 20W 2000lm Rechargeable Floodlight 4000K

IP54 | IK05 | USB-C to USB 1m cable included | 5 year warranty

Code	Version	Wattage	Lumens	CCT	Box Qty	Notes
E06RB2040	245x215x45mm	20W	2000 lm	4000K	6	



LED Floodlights

IP65 | 5 year warranty | Pre-wired with 22cm 3 core flex | Quick fix bracket

Code	Version	Wattage	Lumens	CCT	Box Qty	Notes
KFLD10	101x82x21mm	10W	900 lm	4000K	60	
KFLD20	120x94x21mm	20W	1800 lm	4000K	40	
KFLD30	158x121x21mm	30W	2800 lm	4000K	30	
KFLD50	203x158x31mm	50W	4500 lm	4000K	20	
Accessories						
KFLDPIR	Quick fix, plug & play 120° PIR attachment				100	

High Bay & Low Bay

All Eterna **LiFePO4** batteries come with a 5 year warranty

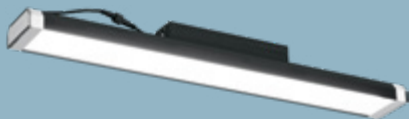


Ara

Ara 90/120/150W 0-10V Dimmable Highbay 120° 4000K

IP65 | IK10 | 5 year warranty | Pre-wired with 1.5m mains lead

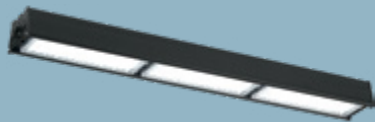
Code	Version	Wattage	Lumens	CCT	Box Qty	Notes
E07ARA40	Ø173x160mm	90W/120W/150W	16200-27000 lm	4000K	4	
Accessories						
E07ARL90	Ara 90° lens				100	
E07ARMW	Ara Plug in microwave sensor with corridor function				100	
E07ARRC	Ara microwave sensor remote controller				100	
E07ARES	Ara Self-Test LiFePO4 emergency pack				4	
E07ARSM	Ara surface mount bracket				50	



Linear LED Luminaires

IP40 | IK10 | 119 lm/W | 5 year warranty
Fitted with 1.5m mains input cable | Suspension pack included

Code	Version	Wattage	Lumens	CCT	Box Qty	Notes
LEDLBAY30	371x81x103mm	30W	3622 lm	4000K	10	
LEDLBAY50	522x81x103mm	50W	6263 lm	4000K	8	
LEDLBAY80	820x81x103mm	80W	9734 lm	4000K	6	
LEDLBAY120	1220x81x103mm	120W	14309 lm	4000K	4	
Accessories						
LBB3050	1 x 283mm fixing bracket For LEDLBAY30/50				20	
LBB80	1 x 530mm fixing bracket For LEDLBAY80				20	
LBB120	2 x 224mm fixing brackets For LEDLBAY120				40	



Linear Highbay with 90° Lens

IP20 | 143 lm/W | 5 year warranty
 Supplied with 900mm mains cable & adjustable hanging kit (900mm length)
 Includes ceiling/wall tilt brackets

Code	Version	Wattage	Lumens	CCT	Box Qty	Notes
HBAYLIN	850x110x68mm	150W	21460 lm	6300K	4	

Downlights

All Eterna **LiFePO4** batteries
 come with a 5 year warranty



Dimmable Recessed CCT LED Commercial Downlights

IP44 | 113 lm/W | 5 Year Warranty

Code	Version	Wattage	Lumens	CCT	Box Qty	Notes
KCOMCS8	110mm hole cut out	8W	845 lm-872 lm	3000K/4000K/6000K	30	
KCOMCS13	165mm hole cut out	13W	41401 lm-1475 lm	3000K/4000K/6000K	20	
KCOMCS18	205mm hole cut out	18W	1985 lm-2030 lm	3000K/4000K/6000K	12	

Accessories for 8W and 13W only

Code	Version	Wattage	Lumens	CCT	Box Qty	Notes
EBPM3	10-60V 100W Max emergency battery pack				1	
SEEBPM3	Self-Test 10-60V 100W Max emergency battery pack				1	
EBPM3LI	LiFePO4 18-60Vdc Maximum 150W emergency battery pack				40	



CCT Recessed Flat Downlights

IP44 (Front) | 109 lm/W | 5 Year Warranty

Code	Version	Wattage	Lumens	CCT	Box Qty	Notes
KFLATDL12	155mm hole cut out	12W	1250 lm-1300 lm	3000K/4000K/6000K	30	
KFLATDL18	220mm hole cut out	18W	1900 lm-1970 lm	3000K/4000K/6000K	20	
KFLATDL24	280mm hole cut out	24W	2500 lm-2530 lm	3000K/4000K/6000K	12	

Accessories

Code	Version	Wattage	Lumens	CCT	Box Qty	Notes
EBPM3LI	LiFePO4 18-60Vdc Maximum 150W emergency battery pack				40	



Power & CCT Dimmable Fire Rated LED Downlight

IP65 | 106 lm/W | 60° beam angle | White trim supplied | 5 Year Warranty

Code	Version	Wattage	Lumens	CCT	Box Qty	Notes
FIRELEDPCS	60mm hole cut out	5W/8W	475 lm-849 lm	3000K/4200K/6500K	40	

Accessories for 8W and 13W only

Code	Version	Wattage	Lumens	CCT	Box Qty	Notes
FIRETRCR	Chrome trim				1	
FIRETRSN	Brushed nickel trim				1	
FIRETRBK	Black trim				1	



Dimmable Fire Rated LED Downlight

IP65 (front) | IP20 (rear) | 103 lm/W | 40° beam angle | 5 Year Warranty
 Loop-in Loop-out wiring facility | 65mm hole cut out

Code	Version	Wattage	Lumens	CCT	Box Qty	Notes
KFIRE4CR	Chrome	5W	515 lm	4000K	20	
KFIRE4SN	Brushed nickel	5W	515 lm	4000K	20	
KFIRE4WH	White	5W	515 lm	4000K	20	



GU10 Mains Shower Light Converters

IP65 | 1 Year Warranty | 70mm hole cut out

Code	Version	Wattage	Box Qty	Notes
SLGUCR	Chrome	50W Max	50	
SLGUSN	Brushed nickel	50W Max	50	
SLGUWH	White	50W Max	50	



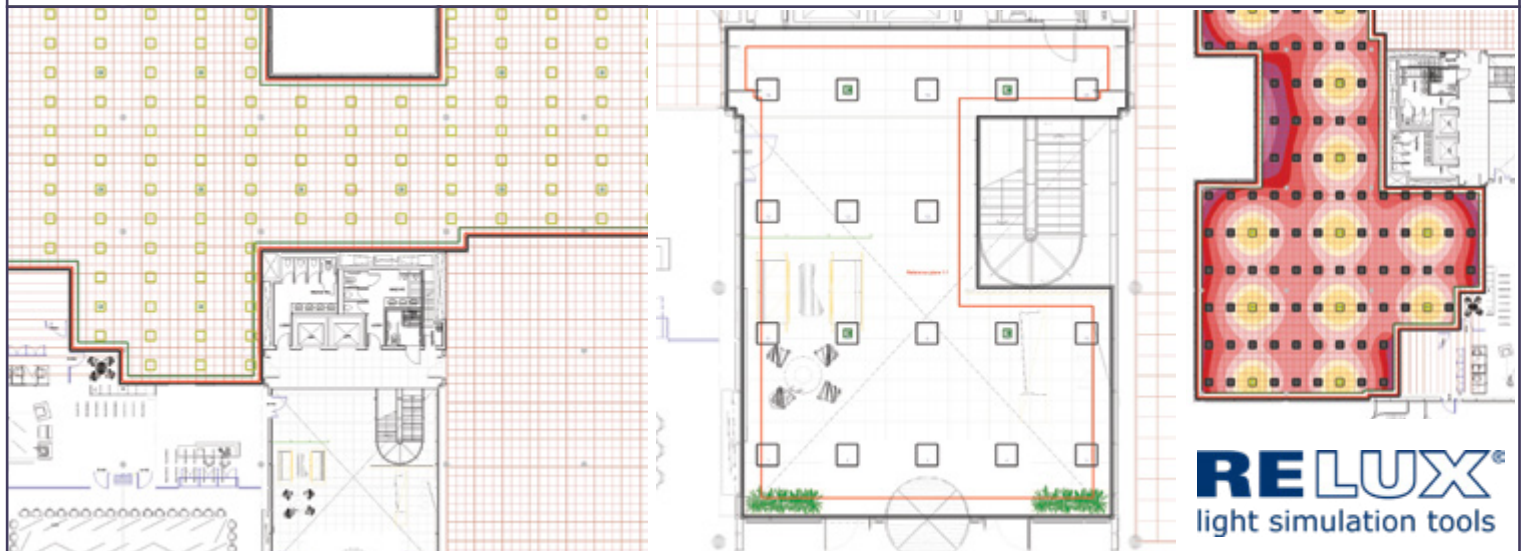
GU10 Mains / GU5.3 Low Voltage Ceiling Downlight Converters

IP20 | 1 Year Warranty | 70-140mm hole cut out

Code	Version	Wattage	Box Qty	Notes
CR80CR	Chrome	50W Max	40	
CR80SN	Brushed nickel	50W Max	40	
CR80WH	White	50W Max	40	

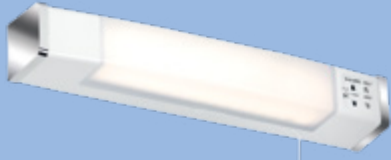
Free Lighting Design Service Available

www.eterna-lighting.co.uk/lighting-design-schemes/



RELUX
light simulation tools

Bathroom Lighting



LED Dual Voltage Shaverlight

IP44 (Fitting) IP21 (Socket) | 5 year warranty
Pull cord switch for isolated illumination

Code	Version	Wattage	Lumens	CCT	Box Qty	Notes
LEDSH44	390x60x65mm	5.5W	410 lm	3000K	10	



Dual Voltage Shaverlight with LED Lamp

IP20 | S15 284mm double ended tubular lamp included | 5 year warranty
Pull cord switch to turn on shaver and light

Code	Version	Wattage	Lumens	CCT	Box Qty	Notes
LEDSHDVO	435x57x65mm	6W	400 lm	3000K	10	



LED Over Mirror Light

IP44 | Pull cord | 5 year warranty

Code	Version	Wattage	Lumens	CCT	Box Qty	Notes
OMLED10	435x36x55mm	10W	1010 lm	3000K	20	



LED Mirror Light with Shaver Socket

IP44 | 5 year warranty
Permanent power to integrated dual voltage shaver socket | Pull cord

Code	Version	Wattage	Lumens	CCT	Box Qty	Notes
LEDMIRROR	390x500x60mm	10.3W	130 lm	3000K	1	



LED Bathroom Ceiling/Wall Fitting

IP44 | 5 year warranty
Polished chrome | Corrosion resistant stainless steel fixing screws

Code	Version	Wattage	Lumens	CCT	Box Qty	Notes
PACIFIC12	ø305x80mm	12W	800 lm	3100K	5	

Bathroom Zones

Zone 3

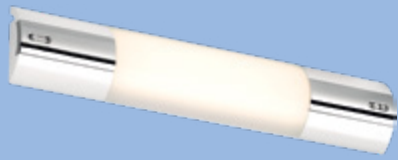
Any area outside Zones 0, 1, and 2. While there are no specific IP requirements, it's still recommended to use equipment that can withstand moisture.

Zone 2

Outside the bath or shower, extending 0.6 metres beyond zone 1 and including the area around wash basins.

Zone 1

Above the bath or shower tray to a height of 2.25 metres, from the floor.



“Designer Style” LED Shaverlights & Over Mirror Lights

480x90x50mm | IP21 | 5 year warranty
 Shaverlights: Permanent power to shaver socket allowing use when not illuminated
 Dual voltage 110V and 240V shaver socket

Code	Version	Wattage	Lumens	CCT	Box Qty	Notes
LEDOM5CR	Chrome Over Mirror	5W	520 lm	3000K	10	
LEDOM5WH	White Over Mirror	5W	520 lm	3000K	10	
LED6SH6CR	Chrome Shaverlight	6W	520 lm	3000K	10	
LED6SH6WH	White Shaverlight	6W	520 lm	3000K	10	

Cabinet Lighting



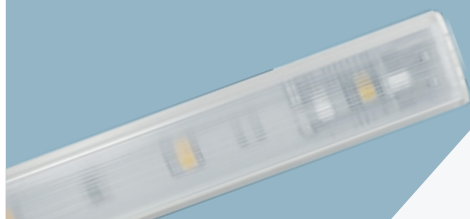
CCT LED Linkable Linear Under-Cabinet Strip Lights

100 lm/W | 5 year warranty
 Link a maximum of 12 fittings end-to-end for a continuous line, or space apart with the 30cm link lead (included). Fitting comes with a 1.8m mains lead, 30cm link lead, and integral plug & sockets for simple and easy connection (no driver required)

Code	Version	Wattage	Lumens	CCT	Box Qty	Notes
LINKCS4	288mm	4W	380 lm-390 lm	3000K/4200K/6500K	10	
LINKCS9	549mm	9W	896 lm-905 lm	3000K/4200K/6500K	10	
LINKCS13	849mm	13W	1264 lm-1295 lm	3000K/4200K/6500K	10	

Accessories

LINKL05	Optional 50cm link lead				5	
---------	-------------------------	--	--	--	---	--



LED Linkable Super Flat Strip Lights

5 year warranty
 Fixing clips, 300mm link lead and butt connector included
 Any combination of SFLWW9 & SFLWW15 up to a maximum power load of 36W

Code	Version	Wattage	Lumens	CCT	Box Qty	Notes
SFLWW9	9 LED (350mm)	2.2W	230 lm	3000K	10	
SFLWW15	15 LED (550mm)	3.6W	360 lm	3000K	20	

Accessories

SFLDR36	36W constant voltage driver				20	
---------	-----------------------------	--	--	--	----	--



LED Surface / Recessed Cabinet Downlights

5 year warranty
 Pre-wired with 2m mains cable and no separate driver required
 Mains voltage: integral driver | 61mm hole cut out size

Code	Version	Wattage	Lumens	CCT	Box Qty	Notes
CLEDCIR	Nickel Circle	1.7W	160 lm	3000K	40	
CLEDCIRWH	White Circle	1.7W	160 lm	3000K	40	
CLEDTRI	Steel Triangle	1.7W	160 lm	3000K	40	

Garden & Spotighting



Heki

IP65 GU10 Wall Lights

IP65 | 1 Year Warranty
Contemporary design with halo design diffuser

Code	Version	Wattage	Box Qty	Notes
E11HK1B	Heki Up or Down	7W Max LED	20	
E11HK2B	Heki Up & Down	7W Max LED	20	



LED GU10 External Aluminium Wall Spot Lights

IP44 | 1 Year Warranty
Fully adjustable head (SSWLDIR only)

Code	Version	Wattage	Box Qty	Notes
SSWLSING	Single Up or Down	35W Max / (7W Max LED)	12	
SSWLTWIN	Twin Up & Down	35W Max / (7W Max LED)	12	
SSWLDIR	Single Directional	35W Max / (7W Max LED)	12	



GU10 Spotlights

IP20 | 1 Year Warranty
Fully adjustable head(s)

Code	Version	Wattage	Box Qty	Notes
SPOT1CR	Chrome Single	1 x 50W Max	36	
SPOT1SN	Brushed Nickel Single	1 x 50W Max	36	
SPOT1WH	White Single	1 x 50W Max	36	
SPOT2CR	Chrome Twin Bar	2 x 50W Max	12	
SPOT2SN	Brushed Nickel Twin Bar	2 x 50W Max	12	
SPOT2WH	White Twin Bar	2 x 50W Max	12	
SPOT3CRBAR	Chrome Triple Bar	3 x 50W Max	6	
SPOT3SNBAR	Brushed Nickel Triple Bar	3 x 50W Max	6	
SPOT3WHBAR	White Triple Bar	3 x 50W Max	6	
SPOT3CRPL	Chrome Triple Plate	3 x 50W Max	12	
SPOT3SNPL	Brushed Nickel Triple Plate	3 x 50W Max	12	
SPOT3WHPL	White Triple Plate	3 x 50W Max	12	
SPOT4CR	Chrome Quad Split Bar	4 x 50W Max	12	
SPOT4SN	Brushed Nickel Quad Split Bar	4 x 50W Max	12	
SPOT4WH	White Quad Split Bar	4 x 50W Max	12	





LED Aluminium Wall Spot Light

IP44 | 5 Year Warranty
Integrated driver | Fully adjustable head

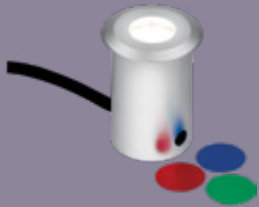
Code	Version	Wattage	Lumens	CCT	Box Qty	Notes
SPOTLEDWAL	Wall Light	4.3W	240 lm	4000K	12	



1100mm Louvred Bollard

IP44 | 1 Year Warranty
ES (E27) lamp required | Root or flange fixing

Code	Version	Wattage	Box Qty	Notes
B1100BKNL	Aluminium Black	100W Max	1	



LED RGB Deck / Plinth Light

IP65 | 5 Year Warranty
Hole cut out 40mm (if fitted without sleeve) | Pre-wired with 1m rubber cable
Complete with mounting sleeve for use in solid surfaces

Code	Version	Wattage	Lumens	CCT	Box Qty	Notes
DECKLED	Anodised Aluminium	2W	205 lm	4000K	50	



GU10 Deck Light

IP68 | 1 Year Warranty
Hole cut out 92mm | Not suitable for immersion in water
Pre-wired with 1m of rubber cable to terminal box

Code	Version	Wattage	Box Qty	Notes
GDL50SS	Stainless Steel Bezel	50W Max	24	



LED Bricklight with Stainless Steel Frame

IP65 | 5 Year Warranty
Hole cut out 228x98x75mm | Integral driver | Cable gland included

Code	Version	Wattage	Lumens	CCT	Box Qty	Notes
BRICKLED	233x105x75mm	4.5W	285 lm	6000K	6	



LED Slim Surface Fitting

IP65 | 5 Year Warranty | ABS housing | Surface mounted

Code	Version	Wattage	Lumens	CCT	Box Qty	Notes
SLICELONG	230x80x25mm	3W	188 lm	4000K	24	

Lanterns



LED Aluminium Lanterns

IP44 | 5 year warranty

Code	Version	Wattage	Lumens	CCT	Box Qty	Notes
ALULANT	Standard	8W	570 lm	4000K	6	
ALULANTPIR	110° PIR	8W	570 lm	4000K	6	



LED Lanterns

IP44 | 5 year warranty

Code	Version	Wattage	Lumens	CCT	Box Qty	Notes
VECOFBK	Standard Full	7W	420 lm	3100K	4	
VECOPIRBK	120° PIR Full	7W	420 lm	3100K	4	
VECOHBK	Standard Half	7W	510 lm	3100K	10	
VECOPIRBK	120° PIR Half	7W	510 lm	3100K	10	



E27 Lanterns

IP44 | 1 year warranty | E27 lamp not included

Code	Version	Wattage	Box Qty	Notes
L60B	Black Standard Full	60W Max	12	
PIRL60BK	Black 110° PIR Full	60W Max	6	
HL60B	Black Standard Half	60W Max	12	
HL60WH	White Standard Half	60W Max	12	
PIRHL60BK	Black 120° PIR Half	60W Max	12	
PIRHL60WH	White 120° PIR Half	60W Max	12	

Hand Dryers & Heating



High Performance Hand Dryers

1 year warranty | Pre-wired with 1 metre of mains lead

Code	Version	Wattage	Air Speed / Airflow	Box Qty	Notes
HDA-1800	White	1.8kW	Air speed: 17.8m/sec Airflow: 2.6m ³ /min	4	
SSHDA-2500	Aluminium	2.5kW	Air speed: 30m/sec Airflow: 4.5m ³ /min	4	



Convector Heaters

1 Year Warranty | Fully adjustable thermostat | Over heat protection

Code	Version	Wattage	Heat Setting Options	Box Qty	Notes
CONVHTSTD	Standard	2kW	750W, 1.25kW, 2kW	1	
CONVHTTIM	24 Hour Timer	2kW	750W, 1.25kW, 2kW	1	



Oil Filled Heaters

1 Year Warranty | Fully adjustable thermostat | Over heat protection

Code	Version	Wattage	Heat Setting Options	Box Qty	Notes
OILHT157	Standard	1.5kW	600W, 900W, 1.5kW	1	
OILHT211	Standard	2kW	800W, 1200W, 2kW	1	
OILHT211T	24 Hour Timer	2kW	800W, 1200W, 2kW	1	

100% useful energy efficiency (at nominal heat output) | 40% useful energy efficiency (at minimum load)



Plinth Fan Heaters with 3 Colour Fascias

1 Year Warranty
Pre-wired with 1.5m of mains lead | Brown, white and stainless steel fascias included

Code	Version	Wattage	Heat Setting Options	Box Qty	Notes
PFH2400	480x125x220mm	2.4kW	0.8kW fan only operation 1.6kW half heat and fan 2.4kW full heat and fan	4	



Downflow Heaters

1 Year Warranty | Thermal cut out

Code	Version	Wattage	Heat Setting Options	Box Qty	Notes
DFH2KW	Standard	2kW	1kW fixed heat / 2kW variable thermostat	6	
DFHT2KW	>35min Runback Timer	2kW	1kW fixed heat / 2kW variable thermostat	6	



Screen Heater

1 Year Warranty | Pre-wired with 1.25m mains lead

Code	Version	Wattage	Air Speed / Airflow / Heat Settings	Box Qty	Notes
SH3WH	580x105x185mm	3kW	Air speed: 1.07m ³ /sec Airflow: 3m ³ /min 25W fan only operation 1.5kW half heat and fan 3kW full heat and fan	1	



Tubular Heaters & Guards

IP44 | 1 Year Warranty | Pre-wired with 1m mains lead
Mounting brackets and additional locking cable gland included

Code	Version	Wattage	Box Qty	Notes
TH1	1ft Heater	60W	20	
TH2	2ft Heater	120W	12	
TH3	3ft Heater	180W	9	
TH4	4ft Heater	240W	6	
TRG1FT	1ft Heater Guard		18	
TRG2FT	2ft Heater Guard		12	
TRG3FT	3ft Heater Guard		6	
TRG4FT	4ft Heater Guard		6	

Lighting Controls



Time Delay Push Switches

1 year warranty

Code	Version	Specification	Box Qty	Notes
TLS1440	Not Compatible with LED IP20	Max load rating: 6 Amp incandescent 1440W Time on adjustable between 12 seconds and 12 minutes	40	
PUSHLED	Compatible with LED IP20	Three load settings - 5-20W, 20-150W, 150-300W Time on adjustable between 12 seconds and 12 minutes	40	
TLS68EX	External IP66	Multi range delay function from 2 seconds to 2 hours Incandescent 16 Amp max, fluorescent 6 Amp max, compact fluorescent 3 Amp max (max six fluorescent lights), low voltage 3 Amp max & fans and ventilation equipment 3 Amp max	50	



Photocells

1 year warranty

Code	Version	Specification	Box Qty	Notes
EMPCR	Remote Fixing Miniature Photocell IP20	1500VA / 5 Amp inductive load, Max 500W LED Switch on/off at 30/80 lux 20mm hole cut out	5	
NPCHKIT	Nema Socket Electronic Photocell Kit IP44	1500VA or 5 Amp inductive load at 60MFD Max LED load: 1000W Switch on/off at 30/70 lux	5	
RDT10A	External Photoelectric Switch IP44	Switching level adjustable between approx. 5-300 lux 10 Amp resistive, 3 Amp inductive load Run back timer adjustable 1-8 hours after switch on Maximum 250W LED load capacity (no more than eight lights)	5	



Microwave Sensor

1 year warranty

Code	Specification	Box Qty	Notes
SENSORMW	Rated Load - 800W (resistive), 400W (inductive), 270W (LED) Detection angle: up to 150° Power consumption: <0.5W Adjustable detection range: Max. 6m Adjustable time setting: 5 seconds - 30 minutes Adjustable Lux control: 2-50 lux Push connect terminals: for ease of connection	150	
Accessories			
MWCASE	IP65 case for SENSORMW	100	



External PIR Detectors

IP44 | 1 year warranty

Code	Version	Specification	Box Qty	Notes
PIR110BK	Black 110° PIR	Time on adjustable: 5 sec - 5 min	30	
PIR180BK	Black 180° PIR	Vertically & horizontally adjustable detector 1000W incandescent / 300W fluorescent maximum load capacity	30	
PIR180WH	White 180° PIR	Maximum 200W LED load capacity (no more than eight lights) Adjustable lux level • 12 metre range	30	



External 360° PIR Detector

IP44 | Optional corner bracket | 1 year warranty

Code	Specification	Box Qty	Notes
EX360PIRWH	1000W incandescent lamp / 300W fluorescent / 150W LED (no more than eight lights) load capacity Time on adjustable: 5 sec - 5 min 12 metre detection area Adjustable lux level 360° detection zone	20	



Internal 360° PIR Detectors

1 year warranty

Code	Version	Specification	Box Qty	Notes
PIRFM360	Recessed	Time on adjustable: 10 sec - 15 min Adjustable lux level 4.5 metre detection zone Max 2000W incandescent / 500W fluorescent load capacity Max 250W LED load capacity (no more than eight lights)	4	
SA360PIR	Surface	1600W incandescent, 500W fluorescent load capacity Max 200W LED load capacity (no more than eight lights) Adjustable lux level Time on adjustable: 10 sec - 15 min 4.5 metre radius range	50	

Accessories



Bells & Chimes

1 year warranty

Code	Version	Specification	Box Qty	Notes
BPWB	Standard Bell Push	Interchangeable black and white covers included	400	
BPLWB	Illuminated Bell Push	Interchangeable black and white covers included	400	
BT4812	Multi Voltage Bell/Chime Transformer	1 Amp rated Thermal cut out Double insulated 4, 8 and 12V tapings	60	
DCIWH	Battery / Transformer Operated Chime	Battery operation for non illuminated bell pushes, must be transformer operated for illuminated bell pushes (see BT4812)	20	
TCWH	Door Chime with Built-in Transformer	Integral transformer	20	



Converter Sockets & RCD Products

1 year warranty

Code	Version	Specification	Box Qty	Notes
CONVERT2	Converter Socket	1 gang to 2 gang	100	
CONVERT4	Converter Socket	1 or 2 gang to 4 gang Surge protection	40	
SSARCDWH	Single Fused A Rated RCD Spur	13A fused spur with "passive" 30mA RCD protection at less than 40ms (typical) Mechanical latching	60	
TWSARCDMC	Metalclad Twin Socket Unswitched A Rated RCD	13A fused spur with "passive" 30mA RCD protection at less than 40ms (typical) Twin earth terminals Mechanical latching	30	
TWSARCDWH	White Twin Unswitched A Rated RCD Socket	13A fused spur with "passive" 30mA RCD protection at less than 40ms (typical) Twin earth terminals Mechanical latching	40	



20mm TRS Gland with Locking Nut

IP68 | 1 year warranty

Code	Version	Box Qty	Notes
20TRSBK	Black	1500	
20TRSG	Grey	1500	
20TRSWH	White	1500	



Waterproof Accessory Box

IP65 | 1 year warranty
Lockable facility (security tag not included)

Code	Version	Box Qty	Notes
SSBE	1 Gang - 100x80x140mm	45	
TWSBE	2 Gang - 160x80x140mm	20	



Adaptable Boxes / Enclosures

1 year warranty

Code	Version	Inside Measurements (Includes Space Inside The Lid)	Box Qty	Notes
220-L	IP54 - 90x90x50mm	80x80x43mm	100	
222-L	IP65 - 110x110x65mm	100x100x55mm	102	
223-L	IP65 - 120x185x80mm	175x110x66mm	45	
224-L	IP65 - 180x230x130mm	220x170x120mm	14	
225-L	IP65 - 160x200x80mm	190x150x70mm	29	
JSL242	IP65 - 350x305x190mm	322x275x170mm	1	
JSL244	IP55 - 440x410x190mm	422x380x170mm	1	
Accessories				
397/5	5 Pole Connector - compatible with 220-L & 222-L		200	
JSL242BP	JSL242 backplate		25	
JSL244BP	JSL244 backplate		25	



Electrical Connectors

1 year warranty

Code	Version	Specification	Box Qty	Notes
CB5A	IP20 - 5 Amp	5 Amp 3 way connector included	400	
CBI5A	IP20 - 15 Amp	15 Amp 3 way connector included	400	
IPCONNECT	IP68 - Waterproof	3 Pole Connector 450V 32A rated Cable size 0.5mm ² - 4mm ²	500	



Lampholders

1 year warranty

Code	Version	Specification	Box Qty	Notes
GU10LH	Black	GU10	200	
AWFO8	White	GU5.3 LV	250	



Plug In Ceiling Rose / Push To Break Autoswitch

1 year warranty

Code	Version	Specification	Box Qty	Notes
CR10	Un-wired Ceiling Rose	6 Amp rating 4 terminal BESA box mounting 4 terminals	180	
CR10PW	2m Pre-wired Ceiling Rose	6 Amp rating 4 terminal BESA box mounting 4 terminals	60	
XS63W	Push to Break Autoswitch	Switching 2A max AC 250V~ Max. 500W load capacity	600	

INDEX

#	COI2PC	17	EBLGDR	12	KCOMCS13	24	OPCIRMW	16	SPOT2WH	28	
20TRSBK	34	COI2SCPC	17	EBLGDU	12	KCOMCS18	24	OPCIRMW3	16	SPOT3CRBAR	28
20TRSG	34	COI8	17	EBLSLIMM	12	KCOMCS8	24	OPCIRSTD	16	SPOT3CRPL	28
20TRSWH	34	COI8EM3	17	EBPM3	13	KEM3BULKLI	10	OPSQEM3	16	SPOT3SNBAR	28
220-L	35	COI8MW	17	EBPM3LI	13	KEXIT3MLI	12	OPSQMW	16	SPOT3SNPL	28
222-L	35	COI8MW3	17	ELEGAN5EM3	21	KFIRE4CR	25	OPSQMW3	16	SPOT3WHBAR	28
223-L	35	COI8PC	17	ELEGANCE5	21	KFIRE4SN	25	OPSQSTD	16	SPOT3WHPL	28
224-L	35	CONVERT2	34	ELESUSPACK	21	KFIRE4WH	25			SPOT4CR	28
225-L	35	CONVERT4	34	EML3NMISO	10	KFLATDL12	24	P		SPOT4SN	28
397/5	35	CONVHTSTD	31	EMLED3M	10	KFLATDL18	24	PACIFIC12	26	SPOT4WH	28
		CONVHTTIM	31	EMLED3NM	10	KFLATDL24	24	PANSUSKIT	20	SPOTLEDWAL	29
A		CPRIS	17	EMMOD	13	KFLD10	23	PFH2400	31	SSARCDWH	34
ALULANT	30	CR10	35	EMMOLR	13	KFLD20	23	PIR110BK	33	SSBE	34
ALULANTPIR	30	CR10PW	35	EMMOUP	13	KFLD30	23	PIR180BK	33	SSHDA-2500	30
ATOM5	19	CR80CR	25	EMPCCR	32	KFLD50	23	PIR180WH	33	SSWLDIR	28
AWFO8	35	CR80SN	25	EX360PIRWH	33	KFLDPIR	23	PIR80BK	19	SSWLISING	28
		CR80WH	25	EXIT3MLED	12	KNANOIP2FT	22	PIRFM360	33	SSWLTWIN	28
B		CSLEDCR	15	EXITMMO	13	KNANOIP4FT	22	PIRHL60BK	30	SURFACEMK	20
B1100BKNL	29	CSLEDCREM3	15	EXITREC	13	KNANOIP5FT	22	PIRHL60WH	30	SURFMK12	20
BATL4FTEM3	21	CSLEDWH	15	EYEBK	17	KRECBOP	19	PIRL60BK	30		
BATL5FTEM3	21	CSLEDWHEM3	15	EYEW	17	KRECBOP LPC	19	PRCIREM3	16	T	
BATL5HOEM3	21	CW3021	17			KTWINSPLI	10	PRCIRMW	16	TCWH	34
BATL6FTEM3	21			F				PRCIRMW3	16	TH1	32
BATL6HOEM3	21	D		FIRELEDPCS	24			PRCIRSTD	16	TH2	32
BATLED4FT	21	DC1WH	34	FIRETRBK	24	L		PRSQEM3	16	TH3	32
BATLED5FT	21	DECKLED	29	FIRETRCR	24	L60B	30	PRSQMW	16	TH4	32
BATLED5HO	21	DFH2KW	31	FIRETRSN	24	LBB120	23	PRSQMW3	16	TLS1440	32
BATLED6FT	21	DFHT2KW	31	FLOOD120W	22	LBB3050	23	PRSQSTD	16	TLS68EX	32
BATLED6HO	21			FLOOD200W	22	LBB80	23	PUSHLED	32	TRG1FT	32
BATLEDPIR	21	E		FLOOD50W	22	LDLEM3	11			TRG2FT	32
BH100E27	19	E03CP12AC	20	FLOOD80W	22	LDLEM3LI	11	R		TRG3FT	32
BHPIRCS	18	E03CP60AC	20			LEDL BAY120	23	RDT10A	32	TRG4FT	32
BLEDBK	19	E04AP4AC	20	G		LEDL BAY30	23			TSPOTLIP20	10
BLEDPIR BK	19	E04AP5AC	20	GDL50SS	29	LEDL BAY50	23	S		TWSARCDMC	34
BPLWB	34	E04AP6AC	20	GRILLBK	17	LEDL BAY80	23	SA360PIR	33	TWSARCDWH	34
BPWB	34	E04APFSEM	20	GRILLWH	17	LEDMIRROR	26	SDCSLCREM3	15	TWSBE	34
BRICKLED	29	E04APFSMS	20	GUI01LH	35	LEDOM5CR	27	SDCSLEDCR	15		
BT4812	34	E04VS4AC	20			LEDOM5WH	27	SDCSLWHEM3	15	V	
BULKFRAME	10	E04VS5AC	20	H		LED SH44	26	SEEBPM3	13	VECOBAT4FT	21
BULKLED	18	E04VS6AC	20	H BAYLIN	24	LED SH6CR	27	SEEBPM3	13	VECOBAT5FT	21
BULKLEDPC	18	E04VSEM	20	HDA-1800	30	LED SH6WH	27	SELDLEM3	11	VECOBAT5HO	21
		E04VSMS	20	HL60B	30	LED SHDVO	26	SEMEM3	10	VECOBAT6FT	21
		E05FS4AC	22	HL60WH	30	LED TWNSPOT	10	SENSORMW	33	VECOBAT6HO	21
		E05FS5AC	22			LGDSET	10	SESIGNLEM3	13	VECOFBK	30
		E05FS6AC	22	I		LINKCS13	27	SESMDC	11	VECOFFIRBK	30
C		E06RB2040	22	IPCONNECT	35	LINKCS4	27	SETSPOT	10	VECOHBK	30
CB15A	35	E07ARA40	23	ISOEBLGDD	12	LINKCS9	27	SFLDR36	27	VECOHPIRBK	30
CB5A	35	E07ARES	23	ISOEBLGDL	12	LINKL05	27	SFLWW15	27	VECOISOD	12
CFLEDMINSC	15	E07ARL90	23	ISOEBLGDR	12	M		SFLWW9	27	VECOISOL	12
CFLEDWHSC	15	E07ARMW	23	ISOEBLGDU	12	MINIEYEBK	14	SH3WH	31	VECOISOR	12
CFLWHEM3SC	15	E07ARRC	23	ISOLGDSET	10	MINIFULLWH	14	SHEYEBK	14	VECOTWINSP	10
CHA18EM3	14	E07ARSM	23	ISOMMOD	13	MSCSLCREM3	15	SHEYEMWBK	14		
CHA18MW	14	E11HK1B	28	ISOMMOLR	13	MSCSLEDCR	15	SHEYEW	14	W	
CHA18MW3	14	E11HK2B	28	ISOMMOLRD	13	MSCSLEDWH	15	SHFULLBK	14	WELLBKPIR	17
CHA18SD	14	EB11	14	ISOSIGND	13	MSCSLWHEM3	15	SHFULLMWBK	14	WELLBKSTD	17
CHA18SDEM3	14	EB13	10	ISOSIGNLR	13	MSLEDMINSC	15	SHFULLMWWH	14	WELLDIFF	18
CHA18STD	14	EB15	11	ISOSIGNUP	13	MSLEDWHSC	15	SHFULLWH	14	WELLWHPIR	17
CHAEYEBK	14	EB16	10	J		MSLWHEM3SC	15	SIGNLEDEM3	13	WELLWHSTD	17
CHAEYEGY	14	EB17	10	JSL242	35	MWCASE	33	SIGNLGD	13	WGLEDBK	18
CHAEYEW	14	EB18	10	JSL242BP	35			SIGNLGDUP	13	WGLEDWH	18
CHAFULLBK	14	EB19	10	JSL244	35	N		SLGUCR	25	WPACKLED	18
CHAFULLCR	14	EB2	11	JSL244BP	35	NPCHKIT	32	SLGUSN	25	WPACKLEDPC	18
CIRCBK	17	EB20	13			O		SLGUWH	25	WPCSBK	18
CIRCCR	17	EB3	10	K		OILHT157	31	SLICELONG	29	WPCSBKPC	18
CIRCWH	17	EB4	10	KCASI4BKFL	16	OILHT211	31	SPOT1CR	28	WPCSWH	18
CLED CIR	27	EB5	13	KCASI4WHFL	16	OILHT21IT	31	SPOT1SN	28	WPCSWHPC	18
CLED CIRWH	27	EB7	12	KCAS8BKFL	16	OMLED10	26	SPOT1WH	28		
CLEDTRI	27	EB8	13	KCAS8WHFL	16	OPCIREM3	16	SPOT2CR	28	X	
COI2	17	EBLGDL	12					SPOT2SN	28	XS63W	35
COI2EM3	17										
COI2MW	17										
COI2MW3	17										