

2026



# eterna.

---

Lighting | Heating | Electrical

**We Are eterna.**

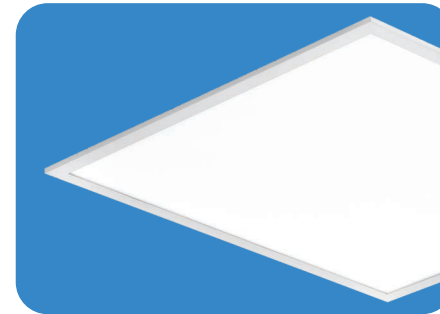
Eterna has been a specialist supplier of lighting, heating, and electrical products to the UK and Irish trade markets since 1946. We provide wholesale-friendly, energy-efficient, and cost-effective solutions that meet the diverse needs of stock and project requirements across the residential, commercial, amenity, and industrial sectors.

We are a dedicated team offering our advice and expertise through your entire buying journey, from stocking solutions, lighting design and technical support. It's our mission to provide invaluable service to everyone.

As part of a client relationship, you will be supported by our external sales force, who will provide regular face-to-face contact, showcasing new products, upgrades and marketing support. They will be backed by our dedicated internal teams, all working together to consistently exceed market expectations with our exceptional service levels.

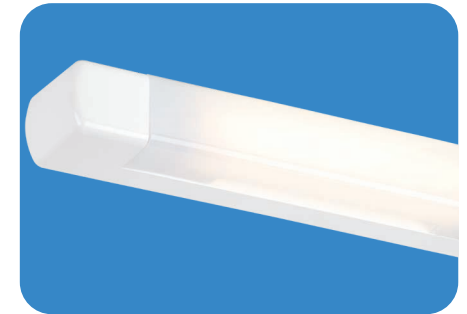


## Contents.



### Commercial, Utility & Industrial.

Emergency Lighting	06
Bulkheads	18
Interior Battens	32
Exterior Battens	38
Panels	42
Commercial Downlights	44
Wall Packs	48
High Bay & Low Bay	52
Site Lights	56



### Residential.

Bathroom Lighting	68
Cabinet Lighting	72
Spotlights	74
Residential Downlights	78
Garden Lighting	82
Lanterns	88



### Heating.

Heating	92
Hand Dryers	100



### Electrical.

Accessories	102
Lighting Controls	110

# PlugPack Compatible

## Simplifying stock management and flexibility onsite.

PlugPack is a game-changer for wholesalers and installers. Reduce the range of variations needed in stock and easily upgrade Eterna lights yourself with emergency, step dim and microwave functionality - simply by clicking into the base unit or LED tray.

Wherever the PlugPack logo is located, this indicates the compatibility with the same three accessories: promising lower demands for stock variability and easier installation for installers on the move.

### Simple. Smart. PlugPack.



3W Standard and Self-Test Switchable Emergency Module with both functions selectable via a switch.



On/Off microwave sensor, featuring dip-switch adjustment for detection area, hold time and daylight threshold.



Step dim microwave sensor, combining two functions in a single module.



**Orba.**

A versatile IP65 bulkhead designed to meet your lighting needs with 3 adjustable outputs and 5 colour temperature options. Multiple conduit entries and a BESA fixing point; a flexible fitting for a number of applications.

Page 19



**Lina.**

An IP66 amenity bulkhead that offers flexibility with adjustable wattages and colour temperatures. The Lina suits both residential or commercial settings including perimeter lighting, paths, gardens, and staircases.

Page 20



**Kora.**

A perfect balance of visual comfort and light efficiency. This range is fully adjustable with power outputs and colour temperature options, and available with a Photocell option for convenience in outdoor applications.

Page 21



**Reba.**

An IP65/IK10 power and CCT switchable utility bulkhead comes in circular, square, white and black to suit the varying project requirements, with either prismatic or opal diffusers.

Page 22



Commercial, Utility & Industrial

# Emergency Lighting.

## Emergency Bulkhead.

High power maintained emergency bulkhead incorporating 3 rows of LEDs for higher output and a more even distribution across the fixture.

- Hinged gear tray & push fit terminal block
- 20mm gland entries as standard
- Viewing distance 20m
- High output LEDs 350 lumens in mains mode and 200 lumens in emergency mode
- LiFePO4 5 year warranty
- EMLED3M ICEL Certified 001-066



Code	Version	Wattage	Lumens	Size (mm)
EMLED3M	Maintained Emergency, Signs Directive Set, 6000K	4	350	355 x 110 x 70
EMLED3NM	Non-Maintained Emergency, Signs Directive Set, 6000K	2	150	355 x 110 x 70
Accessories				
LGDSET	Signs Directive Legend Sticker Set			
ISOLGDSET	ISO 7010 Adhesive Sticker Legend Set			
BULKFRAME	Recessed Bulkframe for the EMLED3 Range			



## Maintained Emergency Bulkhead.

IP65 | 6000K | 5 Year Warranty | 120° | LiFePO4  
5 Year Warranty



Code	Version	Wattage	Lumens	Size (mm)
KEM3BULKLI	Maintained Emergency, ISO Legend Set, 6000K	3	240	355 x 110 x 70
Accessories				
BFRAME	Semi-Recessed Bulkframe			
LGDSET	Signs Directive Legend Sticker Set			
KEM3DS	Drop Down Accessory with Legend			

## Self-Test Maintained Emergency Bulkhead.

IP65 | 6400K | 5 Year Warranty | 120° | LiFePO4  
5 Year Warranty



Code	Version	Wattage	Lumens	Size (mm)
SEM3	Maintained Self-Test Emergency, ISO Legend set, 6400K	4	270	355 x 110 x 70
Accessories				
BFRAME	Semi-Recessed Bulkframe			
LGDSET	Signs Directive Legend Sticker Set			
KEM3DS	Drop Down Accessory with Legend			



## Vorto.

The Vorto IP65 emergency twin spot with 2 adjustable heads giving a combined 500 lumen output for emergency situations. The Vorto is designed for simple and quick installation with a clip on front cover and the use of push fit terminals perfect for commercial, industrial and warehouse applications.

- Polycarbonate IP65 IK08 construction
- Twin 2.5W LED adjustable and tiltable heads
- Quick fit cover and push fit terminals
- 20mm side entry points
- 3 hour non-maintained manual test function
- LiFePO4 5 year warranty
- ICEL Certified (001-069)



Code	Version	Wattage	Lumens	Size (mm)
E01VT65EM	Non-maintained Emergency, 6000K	5	500	297 x 282 x 70

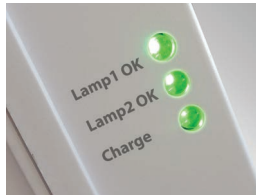


## Internal Emergency Twinspot.

IP20 | IK08 | 6400K | 5 Year Warranty | 120° | LiFePO4  
5 Year Warranty



Code	Version	Wattage	Lumens	Size (mm)
KTWINSPLI	Non-maintained Emergency, 6400K	4	450	285 x 250 x 50



## Internal Self-Test Emergency Twinspot.

IP20 | IK08 | 6000K | 5 Year Warranty | 120° | LiFePO4  
5 Year Warranty



Code	Version	Wattage	Lumens	Size (mm)
SETSPOT	Self-Test Emergency, 6000K	4.5	437	284 x 250 x 51



## LDLEM3 Emergency Downlight.

This LED compact recessed emergency light is ideal for use in corridors, stairwells and commercial spaces that require a discreet emergency solution.

- Aluminium construction
- Matt silver and white trims included
- 32mm diameter hole cut out size
- LiFePO4 5 Year Warranty
- ICEL Certified 001-068



IP20

5 Year

120°

Code	Version	Wattage	Lumens	Ø x H (mm)
LDLEM3	Emergency, 6000K	1.4	120	32 x 230
SELDLEM3	Emergency, Self-Test	1.4	118	45 x 230



## Emergency 2W Downlight.

IP20 | 5 Year Warranty | 120° | Black, Silver, White Bezels included | LiFePO4 5 Year Warranty



Code	Version	Cut Out (mm)	Wattage	Lumens	Ø x H (mm)
LDLEM3LI	Emergency	50	2	160	60 x 210



## Self-Test Surface Mount Emergency Downlight.

IP20 | 6000K | 5 Year Warranty | 120° | LiFePO4 5 Year Warranty



Code	Version	Wattage	Lumens	Ø x H (mm)
SESMDLEM3	Self-Test Emergency	3	175	150 x 45

### Accessories

SESMDCL	Corridor Lens For SESMDLEM3
---------	-----------------------------



## Slimline Emergency Exit Box.

A slim emergency exit box with a hinged front for simple installation with a viewing distance of 29m. Perfect for hospitality, retail and commercial applications.

- Wall mounted hinged polycarbonate design
- LED array on base for downward illumination
- ISO 7010 down, up, left and right legends
- LiFePO4 5 Year Warranty



Code	Version	Wattage	Lumens	Size (mm)
E0ISB1	Black, 6000K	2	27	325 x 187 x 30
E0ISW1	White, 6000K	2	27	325 x 187 x 30

### Accessories

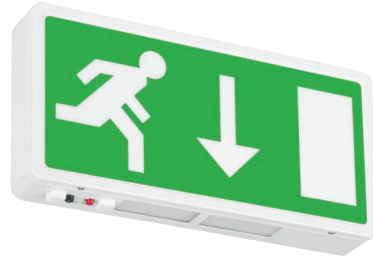
E0ISD	Signs Directive Down Arrow Legend
E0ISUP	Signs Directive Up Arrow Legend
E0ISR	Signs Directive Right Arrow Legend
E0ISL	Signs Directive Left Arrow Legend



## Emergency Exit Box.

- 3 hour maintained or non-maintained operation
- Viewing distance: 32m
- Interchangeable Signs Directive down arrow included
- LiFePO4 5 year warranty
- ICEL Certified 001-067

IP20 | 6500K | 5 Year Warranty | 30,000 Hours | 110°



Code	Version	Wattage	Lumens	Size (mm)
EXIT3MLED	Emergency	4	55	390 x 192 x 60
<b>Accessories</b>				
EBLGDL		Signs Directive Left Legend		
EBLGDR		Signs Directive Right Legend		
EBLGDU		Signs Directive Up Legend		
ISOEBLGDU		ISO 7010 Up Arrow Legend		
ISOEBLGDR		ISO 7010 Right Arrow Legend		
ISOEBLGDD		ISO 7010 Down Arrow Legend		
ISOEBLGDL		ISO 7010 Left Arrow Legend		

## Compact Emergency Exit Box.

IP20 | 6200K | 5 Year Warranty | 120° | LiFePO4  
5 Year Warranty



Code	Version	Wattage	Lumens	Size (mm)
VECOEXIT3M	Emergency	4	70	300 x 180 x 40
SEEXITLI	Emergency	4	80	300 x 180 x 40
<b>Accessories</b>				
VECOISOD		ISO 7010 Down Arrow Legend		
VECOISOL		ISO 7010 Left Arrow Legend		
VECOISOR		ISO 7010 Right Arrow Legend		

## Recessed Maintained Exit Sign.

The 2.5W LED recessed maintained emergency exit sign is designed with a slim low profile construction and provides visibility during both normal operation and emergency conditions. Perfect for commercial and retail applications.

- Polycarbonate body with edge lit acrylic
- ISO 7010 down arrow fitted as standard with additional up, left and right legends included
- Suitable for cut out 330-365mm x 45-75mm
- LiFePO4 5 Year Warranty



Code	Version	Wattage	Lumens	Size (mm)
E0IREI	Emergency, 6000K	2.5	50	380 x 224 x 90
<b>Accessories</b>				
E0IREC	Filler Frame for Replacing LEDMDEM3			400 x 135 x 2



## Hanging Emergency Exit Sign.

- Remote connection box complete with adjustable length suspension cable (max. 80cm)
- Supplied with a double-sided exit legend
- Viewing distance 29m



IP20 | 6500K | 5 Year Warranty | 25,000 Hours | 110° | LiFePO4 5 Year Warranty

Code	Version	Wattage	Lumens	Size (mm)
SIGNLEDEM3	Emergency	3	50	340 x 227 x 45
Accessories				
SIGNLGD	Signs Directive Left/Right Arrow Legend			
SIGNLGDUP	Signs Directive Up Arrow Legend			
ISOSIGNLR	ISO 7010 Left/Right Arrow Legend			
ISOSIGND	ISO 7010 Down Arrow Legend			
ISOSIGNUP	ISO 7010 Up Arrow Legend			

## Multi-Fixing Exit Sign.

- Ceiling, side, wall mounted and suspended
- 1m suspension cable included
- Recessed option available with EXITREC
- Supplied with ISO 7010 up arrow
- 3 hour maintained mode or non-maintained
- Viewing distance 30m



IP20 | 6000K | 5 Year Warranty | 120° | LiFePO4 5 Year Warranty

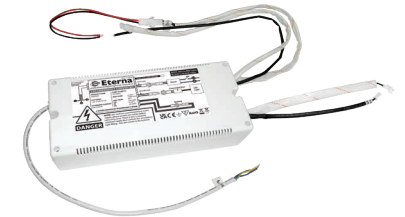
Code	Version	Wattage	Lumens	Size (mm)
EXITMMO	Emergency	2.8	38	350 x 235 x 42
Accessories				
EXITREC	White Recessed Mounting Kit for EXITMMO			
EMMOUP	Signs Directive Up Arrow Legend			
EMMOD	Signs Directive Down Arrow Legend			
EMMOLR	Signs Directive Left/Right Arrow Legend			
ISOMMOLR	ISO 7010 Left/Right Arrow Legend			
ISOMMOLRD	ISO 7010 Left/Right Down Arrow Legend			
ISOMMOLD	ISO 7010 Down Arrow Legend			

## 3W Remote LiFePO4 Emergency Battery Pack.



Code	Version	Wattage	Size (mm)
EBPM3LI	Standard	3	338 x 80 x 45

## 10-60V 100W Self-Test Emergency Battery Pack.



Code	Version	Wattage	Size (mm)
SEEBPM3	Self-Test	100	250 x 110 x 55

## Battery Replacement Service.

Extend the life of your emergency products with a replacement of your Eterna batteries.

[eterna-lighting.co.uk/battery-replacement-service](http://eterna-lighting.co.uk/battery-replacement-service)



Commercial, Utility & Industrial

# Bulkheads.

## Orba.

Multiple 20mm conduit entries and a rear BESA fixing point enables the fitting to suit a number of applications, while the plug and play emergency and microwave sensor accessories offer quick and convenient flexibility.

- Power selectable: 8W, 14W, 16W
- CCT selectable: 2700K, 3000K, 4000K, 5000K, 6000K
- Multiple 20mm conduit entry points and rear BESA mounting
- Twist on opal diffuser, clip on white trim and hinged LED tray
- Plug and play accessories
- Loop in, loop out push fit terminals



**PlugPack**  
Compatible

Code	Version	Wattage	Lumens	lm/W	Ø x H (mm)
E02B2W	Mini, White	9/12	1040-1400	115-116	260 x 75 <span style="float: right;">Aug 2026</span>
E02BAACW	Standard, White	8/14/16	1000-1900	119-125	316 x 74
E02B4W	Large, White	16/20/24	1870-2650	111-119	400 x 78 <span style="float: right;">Aug 2026</span>

PlugPack Accessories	
E02U0IES	2-in-1 Emergency Pack
E02U01MW	On/Off Microwave Sensor
E02U0ISD	Step Dim MW Sensor

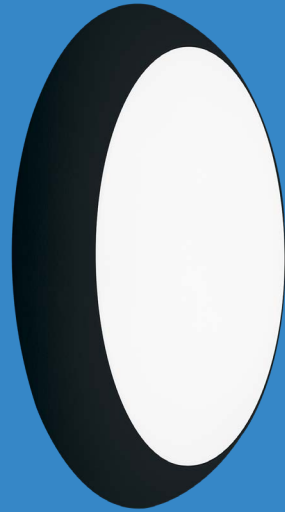
Trim Accessories	
E02B2TB	Mini Full Trim Black
E02B2TC	Mini Full Trim Chrome
E02BATB	Standard Full Trim Black
E02BATC	Standard Full Trim Chrome
E02BATIB	Standard Eyelid Trim Black
E02BATIW	Standard Eyelid Trim White
E02B4TB	Large Full Trim Black
E02B4TC	Large Full Trim Chrome



# Lina.

The Lina is an IP66 amenity bulkhead that offers flexibility with 3 adjustable wattages and 5 colour temperatures. The Lina can suit both residential or commercial settings including perimeter lighting, paths, gardens, and staircases.

- Power selectable 8W, 14W, 16W
- CCT selectable 2700K, 3000K, 4000K, 5000K, 6000K
- Central integrated emergency LED array
- Fastened opal polycarbonate diffuser with a twist on trim
- Hinged LED tray
- Two 20mm rear cable entries and central mounted BESA point
- Loop in, loop out push fit terminals



**PlugPack**  
Compatible

IP66

IK08

5 Year

50k  
Hours

CCT

120°

# Kora.

Multiple conduit entries and a BESA fixing point enables the fitting to suit a number of applications, while the plug and play emergency and microwave sensor accessories offer quick and convenient flexibility.

- Power selectable 8W, 14W, 16W
- CCT selectable 2700K, 3000K, 4000K, 5000K, 6000K
- Multiple 20mm conduit entry points and rear BESA mounting
- Opal screw on diffusers
- Loop in, loop out push fit terminals
- Clip-on decorative trims available
- Photocell version preset dusk till dawn operation



**PlugPack**  
Compatible

IP65

IK10

5 Year

50k  
Hours

CCT

120°

Code	Version	Wattage	Lumens	lm/W	Ø x H (mm)
E02LNACB	Black Full Trim	8/14/16	1000-1900	119-125	305 x 70
E02LNACIB	Black Eyelid Trim	8/14/16	500-1000	63	305 x 70
E02LNACW	White Full Trim	8/14/16	1000-1900	119-125	305 x 70
E02LNACIW	White Eyelid Trim	8/14/16	500-1000	63	305 x 70

### PlugPack Accessories

E02U01ES	2-in-1 Emergency Pack
E02U01MW	On/Off Microwave Sensor
E02U01SD	Step Dim MW Sensor



Code	Version	Wattage	Lumens	lm/W	Ø x H (mm)
E02KRAC	Standard	8/14/16	1000-1900	119-125	300 x 95
E02KRAC6	Photocell	8/14/16	1000-1900	119-125	300 x 95

### PlugPack Accessories

E02U01ES	2-in-1 Emergency Pack
E02U01MW	On/Off Microwave Sensor
E02U01SD	Step Dim MW Sensor

### Trim Accessories

CIRCBK	Black Full Trim
CIRCWH	White Full Trim
CIRCCR	Chrome Full Trim
EYEBK	Black Eyelid Trim
EYEWLH	White Eyelid Trim

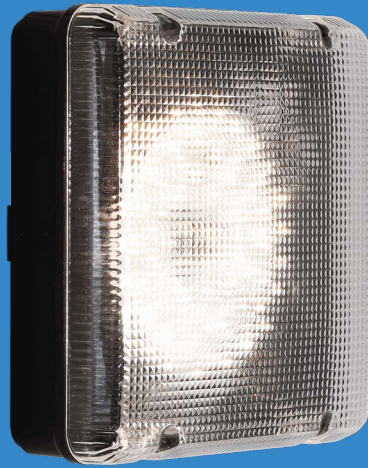


# Reba Square.

The Reba square utility bulkhead comes with opal and prismatic diffusers, in white or black to suit varying project requirements.

Multiple conduit entries and a BESA fixing point ensures multiple install methods are met, while the plug and play emergency and microwave sensor accessories offer quick and convenient flexibility.

- Power selectable: 8W, 14W, 16W
- CCT selectable: 2700K, 3000K, 4000K, 5000K, 6000K
- Multiple 20mm conduit entry points and rear BESA mounting
- Prismatic and opal screw on diffusers
- Plug and play emergency pack and on/off or step dim sensors available
- Loop in, loop out push fit terminals



**PlugPack**  
Compatible

# Reba Circular.

The Reba circular utility bulkhead comes with opal and prismatic diffusers, in white or black to suit varying project requirements.

Multiple conduit entries and a BESA fixing point ensures multiple install methods are met, while the plug and play emergency and microwave sensor accessories offer quick and convenient flexibility.

- Power selectable: 8W, 14W, 16W
- CCT selectable: 2700K, 3000K, 4000K, 5000K, 6000K
- Multiple 20mm conduit entry points and rear BESA mounting
- Prismatic and opal screw on diffusers
- Plug and play emergency pack and on/off or step dim sensors available
- Loop in, loop out push fit terminals



**PlugPack**  
Compatible

Code	Version	Wattage	Lumens	lm/W	Size (mm)
E02RAS2B	Black, Square, Opal	8/14/16	1000-1950	122-125	255 x 255 x 85
E02RAS2W	White, Square, Opal	8/14/16	1000-1950	122-125	255 x 255 x 85
E02RAS1B	Black, Square, Prismatic	8/14/16	1200-2145	134-150	255 x 255 x 85
E02RAS1W	White, Square, Prismatic	8/14/16	1200-2145	134-150	255 x 255 x 85

### PlugPack Accessories

E02U01ES	2-in-1 Emergency Pack
E02U01MW	On/Off Microwave Sensor
E02U01SD	Step Dim MW Sensor

Code	Version	Wattage	Lumens	lm/W	Ø x H (mm)
E02RAC2B	Black, Circular, Opal	8/14/16	1000-1950	122-125	Ø 288 x 85
E02RAC2W	White, Circular, Opal	8/14/16	1000-1950	122-125	Ø 288 x 85
E02RAC1B	Black, Circular, Prismatic	8/14/16	1200-2145	134-150	Ø 288 x 85
E02RAC1W	White, Circular, Prismatic	8/14/16	1200-2145	134-150	Ø 288 x 85

### PlugPack Accessories

E02U01ES	2-in-1 Emergency Pack
E02U01MW	On/Off Microwave Sensor
E02U01SD	Step Dim MW Sensor



# Saya.

The Saya bulkhead features a sleek dome diffuser with power and colour switchable option, allowing seamless adaptation to any environment.

Crafted from robust polycarbonate, it delivers long-lasting performance in both indoor and outdoor settings.

- Power selectable 8W, 14W, 16W
- CCT selectable, 2700K, 3000K, 4000K, 5000K, 6000K
- Up to 116lm/W
- BESA mounting option
- Twist on diffuser trim and a hinged LED tray
- Available accessories in black trim or chrome trim
- Plug and play emergency pack, microwave sensor, plus a microwave sensor with step dim function
- Loop in, loop out push fit terminals

Coming  
August  
2026



**PlugPack**  
Compatible

IP65

IK10

5 Year

50k  
Hours

CCT

120°

Code	Version	Wattage	Lumens	lm/W	Ø x H (mm)
E02SYAC	Standard, White	8/14/16	935-1760	110-116	325 x 110

PlugPack Accessories		Trim Accessories	
E02U01ES	2-in-1 Emergency Pack	E02SYTB	Full Black Trim
E02U01MW	On/Off Microwave Sensor	E02SYTC	Chrome Full Trim
E02U01SD	Step Dim MW Sensor		



# Skye.

The Skye is a durable IP65 aluminium bulkhead. Designed with a polycarbonate diffuser and multiple conduit entries.

Available with full and eyelid trims and in a range of variants including emergency, step dim and on/off microwave, to suit a number of applications.

- Power selectable 8W, 14W, 16W
- CCT selectable 2700K, 3000K, 4000K, 5000K, 6000K
- IP65 and IK10 rating
- Robust aluminium construction with captive stainless steel screws
- Multiple 20mm conduit entry points with loop in, loop out push fit terminals
- Available in Emergency, On/Off Microwave and Step Dim versions



IP65

IK10

5 Year

50k  
Hours

CCT

120°

Code	Version	Wattage	Lumens	lm/W	Ø x H (mm)
E02SKACB*	Black Full Trim	8/14/16	900-1700	106-113	360 x 70
E02SKACIB*	Black Eyelid Trim	8/14/16	610-1200	75-76	360 x 70
E02SKACW*	White Full Trim	8/14/16	900-1700	106-113	360 x 70
E02SKACIW*	White Eyelid Trim	8/14/16	610-1200	75-76	360 x 70

Code Suffix*	Version
1	2-in-1 Emergency
2	On/Off Microwave
3	2-in-1 Emergency, On/Off Microwave
4	Step-Dim Microwave
5	2-in-1 Emergency, Step-Dim Microwave



# Moon.

The Moon bulkhead is a decorative IP54 trimless luminaire with 3 adjustable colour temperatures with an output of over 1900 lumens to suit a range of commercial and domestic applications.

The slim line design and wide light distribution creates a contemporary feel and comes complete with a concealed push release mounting bracket for ceiling and wall installations. A range of full and eyelid clip on trim accessories are available in black and white to suit different design requirements.

- High lumen efficiency 110lm/w
- CCT Switchable 3000K, 4000K, 6000K
- Concealed white base with push release rear mounting bracket
- Trimless design, full and eyelid trims available
- Rear connection with push fit terminals



Code	Version	Wattage	Lumens	lm/W	Ø x H (mm)
E02MN28C	Circular, Opal, Trimless	18	1980-1985	110	280 x 50
Accessories					
E02MN28TB			Full Trim Black		
E02MN28TW			Full Trim White		
E02MN28TIB			Eyelid Trim Black		
E02MN28TIW			Eyelid Trim White		
E02MN28TI2B			Keyhole Trim Black		
E02MN28TI2W			Keyhole Trim White		



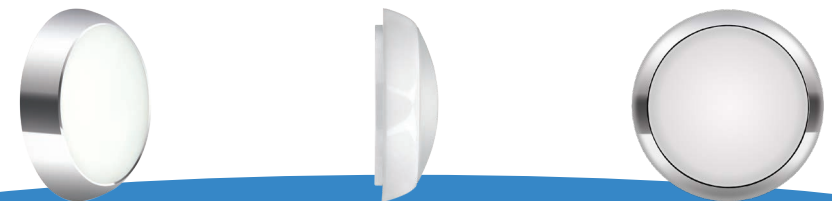
# Carina.

A versatile range of decorative bulkheads, offering practicality and style with multiple functional options - perfect for superior leisure, hotels & outdoor applications.

- Polycarbonate construction
- Full circular LED array
- IP65, ceiling or wall mounted
- Central BESA box mounting option on the base
- Colour temperature selectable - options of 3100K, 4200K & 6400K easily set by a dip switch on the gear tray
- Plug in connector between the terminal block and the gear tray. Terminal block is located on the base, allowing for easy wiring and the gear tray to be removed during installation



Code	Version	Wattage	Lumens	lm/W	Ø x H (mm)
CSLEDWH	Standard, White	17	1480-1580	87-93	325 x 110
CSLEDWHEM3	Emergency, White	17	1480-1580	87-93	325 x 110
MSCSLEDWH	Microwave, White	17	1480-1580	87-93	325 x 110
MSCSLWHEM3	Emergency, MW, White	17	1480-1580	87-93	325 x 110
SDCSLWHEM3	Emergency, SD, White	17	1480-1580	87-93	325 x 110
CSLEDCR	Standard, Chrome	17	1480-1580	87-93	325 x 110
CSLEDCREM3	Emergency, Chrome	17	1480-1580	87-93	325 x 110
MSCSLEDCR	Microwave, Chrome	17	1480-1580	87-93	325 x 110
MSCSLCREM3	Emergency, MW, Chrome	17	1480-1580	87-93	325 x 110
SDCSLEDCR	Step Dim MW, Chrome	17	1480-1580	87-93	325 x 110
SDCSLCREM3	Emergency, SD, Chrome	17	1480-1580	87-93	325 x 110

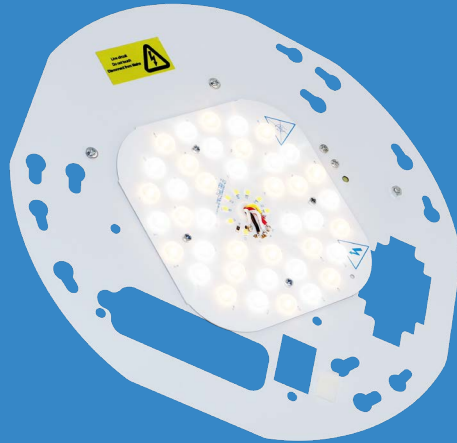


# Universal Retrofit Gear Tray.

The universal retrofit LED gear tray is ideal for the replacement or upgrade of existing bulkheads, with 3 adjustable outputs and 5 colour temperature options built-in.

Suitable for a number of applications and available in a range of variants including, emergency or microwave.

- Power selectable 8W, 14W, 16W
- CCT selectable, 2700K, 3000K, 4000K, 5000K, 6000K
- Wide optics engineered for an even distribution
- Multiple keyhole slots, will fit many existing 2D fittings
- Sensor version; on/off microwave, with adjustable time, lux and detection area
- Emergency version; standard or self-test built in



Code	Version	Wattage	Lumens	lm/W	Ø x H (mm)
E02G01AC	Standard	8/14/16	1300-2400	150-163	250 x 40
E02G01AC1	2-in-1 Switchable Emergency/Self-Test	8/14/16	1300-2400	150-163	250 x 40
E02G01AC2	On/Off Microwave	8/14/16	1300-2400	150-163	250 x 40
E02G01AC3	2-in-1 Switchable Emergency/Self-Test, On/Off Microwave	8/14/16	1300-2400	150-163	250 x 40
E02G01AC4	Step Dim Microwave	8/14/16	1300-2400	150-163	250 x 40
E02G01AC5	2-in-1 Switchable Emergency/Self-Test, Step Dim Microwave	8/14/16	1300-2400	150-163	250 x 40



## Cassi.

Cassi circular compact bulkhead range offers a practical solution for areas requiring a small bulkhead. A design ideal for utility areas: wall or ceiling mounted. Available in two sizes to suit different output requirements.



IP54 | IK08 | 4000K | 5 Year Warranty | 120°

Code	Version	Wattage	Lumens	lm/W	Ø x H (mm)
KCAS8BKFL	Black, full trim	8	900	113	173 x 51
KCAS8WHFL	White, full trim	8	900	113	173 x 51
KCAS14BKFL	Black, full trim	14	1570	112	228 x 51
KCAS14WHFL	White, full trim	14	1570	112	228 x 51

## External Polycarbonate Bulkhead.

General purpose IP65 mini LED bulkhead available with or without an integral photocell. Front opal diffuser creates an effective and efficient light output for functional applications such as, porch lighting, side access and security lighting.



IP65 | IK08 | 4000K | 5 Year Warranty | 120°

Code	Version	Wattage	Lumens	lm/W	Size (mm)
KRECB0PL	Standard	10	1045	105	230 x 110 x 105
KRECB0PLPC	Photocell	10	1045	105	230 x 110 x 105

## Bulkhead with E27 Lampholder.

IP65 Bulkhead with E27 Lamp Holder. Requires 1x suitable E27 lamp (not included). Easy connection directly into the lampholder. Pre-formed 20mm cable entry knockouts on each end and one on rear



IP65 | IK08 | 1 Year Warranty

Code	Version	Size (mm)
BH100E27	E27	238 x 110 x 110

## White Utility Bulkhead.

A simple compact bulkhead with multiple 20mm cable entries for quick and easy installation.

IP65 | 4000K | 5 Year Warranty | 120°



Code	Version	Wattage	Lumens	lm/W	Size (mm)
ATOM5	Non-Dimmable	6	710	118	165 x 115 x 75

## CCT PIR Bulkhead.

Durable and attractive oval waterproof bulkhead with selectable CCT and PIR, perfect for exteriors and high-traffic circulation areas.

IP65 | IK05 | 3000K/4000K/6000K | 5 Year Warranty | 120°



Code	Version	Wattage	Lumens	lm/W	Size (mm)
BHPIRCS	PIR	10	1166-1252	117-125	210 x 120 x 65

## Prismatic Bulkhead.

Energy efficient LED alternative to traditional bulkheads. Small robust bulkhead that offers durability for domestic and light commercial applications.

IP44 | IK08 | 3100K | 5 Year Warranty | 120°



Code	Version	Wattage	Lumens	lm/W	Size (mm)
BLEDBK	Standard	7	500	71	265 x 115 x 110
BLEDPIRBK	PIR	7	520	74	265 x 115 x 110





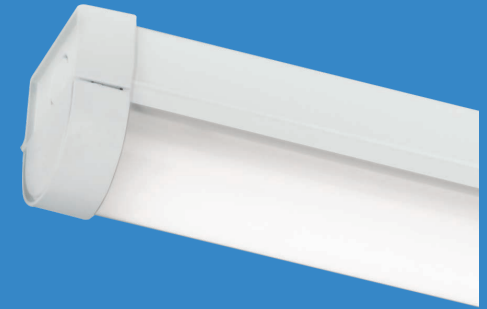
Commercial, Utility & Industrial

# Interior Battens.

## Amplus.

The Amplus indoor batten range offers both wattage and colour temperature selection enabling 12 combinations into a single fitting.

The Amplus is designed for simple and quick installation with a hinged front diffuser for easy access to the gear tray, with plug and play emergency and microwave sensor accessories to suit multiple applications.



- High lumen efficiency 150lm/W
- Power selectable
- CCT switchable 3000K, 4000K, 6000K
- 20mm conduit entry and BESA fixing points
- Hinged front diffuser for easy access to gear tray
- Opal polycarbonate diffuser
- Plug and play microwave sensor and standard emergency pack available
- Compatible with ELESUSPACK



Code	Version	Wattage	Lumens	lm/W	Size (mm)
E04AP4AC	4ft	21/27/32/38	3150-5700	150	1172 x 62 x 74
E04AP5AC	5ft	29/36/44/52	4350-7800	150	1462 x 62 x 74
E04AP6AC	6ft	33/42/51/60	4960-9000	150	1732 x 62 x 74
Accessories					
E04APFSEM	Amplus Foris Plug Play 3W Standard Emergency Pack				
E04APFSMS	Amplus Foris Plug Play On/Off Microwave Sensor				
ELESUSPACK	ELEGANCE5 Suspension Kit				



# Verus.

The Verus linear batten offers both wattage and colour temperature selection. The Verus comes complete with 20mm conduit entry points at both ends and BESA fixing points to the rear.

The plug and play emergency and microwave sensor enable further flexibility to suit varying requirements on site.

- High lumen efficiency up to 125lm/W
- Power selectable
- CCT switchable 3000K, 4000K, 6000K
- 20mm conduit entry and BESA fixing points
- Steel housing and opal polycarbonate diffuser
- Plug and play microwave sensor and standard emergency pack available



Code	Version	Wattage	Lumens	lm/W	Size (mm)
E04VS4AC	4ft	21/27/32/38	2625-4750	125	1222 x 199 x 82
E04VS5AC	5ft	32/41/50/58	4000-7250	125	1522 x 199 x 82
E04VS6AC	6ft	36/46/55/65	4500-8125	125	1822 x 199 x 82
Accessories					
E04VSEM	Verus Plug Play 3W Standard Emergency Pack				
E04VSMS	Verus Plug Play On/Off Microwave Sensor				



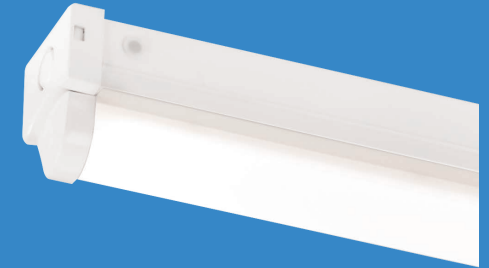
# BATLED.

Coming  
July  
2026

The BATLED indoor batten range available in 4ft, 5ft, 6ft offers both wattage and colour temperature selection enabling 12 combinations into 1 fitting.

The BATLED is designed for simple and quick installation with a hinged front diffuser for easy access to the gear tray, with plug and play emergency and PIR sensor accessories to suit multiple applications.

- High lumen efficiency 140lm/W
- Power selectable
- CCT seelctable 3000K, 4000K, 6000K
- 20mm conduit entry and BESA fixing points
- Hinged front diffuser for easy access to gear tray
- Opal polycarbonate diffuser
- Plug and play PIR sensor and standard emergency pack available



Code	Version	Wattage	Lumens	lm/W	Size (mm)
E04BL4AC	4ft	21/27/32/38	2940-5040	136-140	1168 x 62 x 74
E04BL5AC	5ft	28/35/43/51	3860-6760	132-137	1458 x 62 x 74
E04BL6AC	6ft	32/41/50/59	4585-7800	132-143	1728 x 62 x 74
Accessories					
E04UPIR	PIR Sensor Add-On for BATLED Batten				
E04APFSEM	Plug Play 3W Standard Emergency Pack				





## Elegance Twin Slimline.

A slim, modern design LED ceiling fitting which offers a more stylish alternative to traditional battens. Where a more aesthetically pleasing fixture is desirable, this versatile and elegant light source is suitable for commercial, retail and domestic applications.



IP20 | 4000K | 5 Year Warranty | 120°

Code	Version	Wattage	Lumens	lm/W	Size (mm)
ELEGANCE5	Standard	50	5000	100	1503 x 127 x 43
ELEGANCE5EM3	Emergency	50	5000	100	1503 x 127 x 43
Accessories					
ELESUSPACK	1m suspension pack for Elegance Range				





Commercial, Utility & Industrial

# Exterior Battens.

## Foris.

The Foris anti-corrosive linear batten offers both wattage and colour temperature selection enabling 12 combinations into 1 fitting.

The Foris comes complete with pre-drilled 20mm conduit entry points (capped), stainless steel retaining clips that require a flat head screwdriver to gain access and flexible bracket sliders to suit retrofit positioning. The plug and play emergency and microwave sensor enables further flexibility to suit varying requirements on site.



- High lumen efficiency 150lm/w
- Power selectable
- CCT switchable 3000K, 4000K, 6000K
- 20mm conduit entry at both ends and rear (ends pre-drilled and capped)
- Stainless steel clips
- Supplied with IP cable grommet, 2x ceiling brackets



Code	Version	Wattage	Lumens	lm/W	Size (mm)
E05FS4AC	4ft	17/21/26/30	2550-4500	150	1200 x 105 x 79
E05FS5AC	5ft	28/35/43/50	4200-7500	150	1500 x 105 x 79
E05FS6AC	6ft	31/40/48/57	4650-8550	150	1800 x 105 x 79
Accessories					
E04APFSEM	Amplus Foris Plug Play 3W Standard Emergency Pack				
E04APFSMS	Amplus Foris Plug Play On/Off Microwave Sensor				



## Nano Utility Weatherproof Batten.

Slim profile batten available in 600mm, 1200mm and 1500mm, offering even light distribution, single end cable entry through an IP gland with push fit terminals for easy installation. Supplied with ceiling wall clips.



IP65 | 4000K | 5 Year Warranty | 120°

Code	Version	Wattage	Lumens	lm/W	Size (mm)
KNANOIP2FT	2ft	15	1835	122	600 x 48 x 38
KNANOIP4FT	4ft	22	2550	116	1200 x 48 x 38
KNANOIP5FT	5ft	25	3070	123	1500 x 48 x 38



## Pre-Wired Weatherproof Batten.

Low profile IP65 batten which is half the height of a typical weatherproof. The batten offers a slim design to suit certain applications. Pre-wired with a 1.5m flex makes installation quick and simple.



IP65 | 4000K | 5 Year Warranty | 120°

Code	Version	Wattage	Lumens	lm/W	Size (mm)
VECOWP5FT	5ft	45	4400	98	1500 x 52 x 35





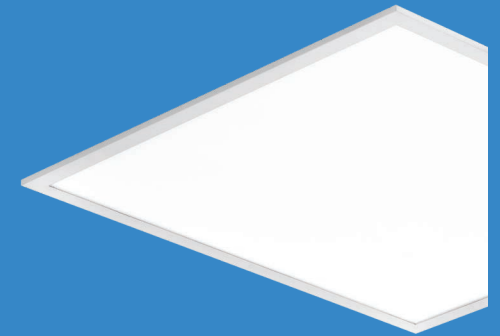
Commercial, Utility & Industrial

# Panels.

## Capax.

The Capax TP(b) UGR19 rated backlit panel delivers high levels of efficiency, achieving low glare and effective light distribution. The dual power and three colour temperature options within the panel offers significant versatility for a wide range of applications including commercial and educational environments.

- High efficiency 130 lm/w
- 35mm deep design
- Dual power, dip switch adjustable on the driver
- CCT selectable 3000K/4000K /6000K, CCT switch on panel cable - set to 4000K as standard
- TP(b) rated UGR19 diffuser
- L80B50 50,000hrs
- Non-dimmable driver included. Dali and 0-10V driver options available



Code	Version	Wattage	Lumens	lm/W	Size (mm)
E03CP60AC	Non-Dimmable	25/36	3250-4770	130-133	595 x 595 x 28
E03CP636CD	DALI-2	36	4670-4770	130-133	595 x 595 x 28
E03CP12AC	Non-Dimmable	40/58	5250-7630	130-133	1195 x 595 x 33
E03CP1258CD	DALI-2	58	7540-7630	130-133	1195 x 595 x 33
Accessories					
EBPM3LI	3W Remote LiFePO4 Emergency Battery Pack				
SURFACEMK	Surface Mounting Box for 600x600 LED Panels				
SURFMK12	Surface Mounting Box for 1200x600 LED Panels				
PANSUSKIT	Suspension Pack for LED Panels				





Commercial, Utility & Industrial

# Commercial Downlights.

## Vinko Commercial Downlight.

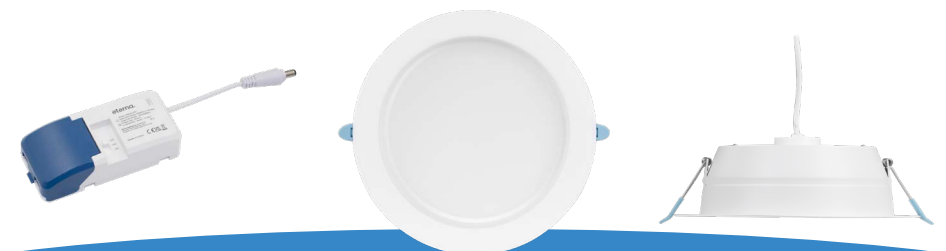
Vinko is a versatile recessed fitting designed for commercial spaces. With multiple sizes, selectable power outputs, and three colour temperatures, it adapts effortlessly to any environment.

An optional plug-and-play emergency pack ensures fast, hassle-free emergency lighting conversion.

- Power selectable
- CCT selectable, 3000K, 4000K, 6000K
- Up to 127lm/w
- IP44 from the front with TP(a) rated diffuser
- Non-dimmable driver included. Dali option available
- Plug and play emergency pack available
- Loop in, loop out push fit terminals
- 5 year warranty



Code	Version	Cut Out (mm)	Wattage	Lumens	lm/W	Ø x H (mm)
E08VR10AC	Non-Dimmable	100	5/7	590-795	114-118	120 x 55
E08VR10ACD	Dali-Dimmable	100	7	795	114	120 x 55
E08VR15AC	Non-Dimmable	150	8/11/13	1016-1535	118-127	170 x 69
E08VR15CD	Dali-Dimmable	150	13	1535	118	170 x 69
E08VR20AC	Non-Dimmable	200-240	12/15/18	1460-2200	122-123	250 x 80
E08VR20CD	Dali-Dimmable	200-240	18	2200	122	250 x 80



# Vinko Surface Mount Downlight.

The Vinko surface mount downlight has been designed with power and temperature selectable options. Its adjustable mounting bracket makes it perfect for both retrofit and new installations.

Suitable for domestic, residential or commercial locations. This fitting combines sleek design bringing effortless style and efficiency.

- Suitable for both surface and recessed applications
- Power selectable
- CCT selectable: 3000K/4000K/6000K
- Up to 122lm/W
- IP40 From the front
- Loop in, loop out push fit terminals
- 5 year warranty



Code	Version	Cut Out (mm)	Wattage	Lumens	lm/W	Ø x H (mm)
E08VN23AC	235mm	100-180	9/12/15	1100-1774	118-122	235 x 22
E08VN30AC	300mm	100-230	14/18/22	1774-2642	118-122	300 x 22



## Recessed Flat Downlight.

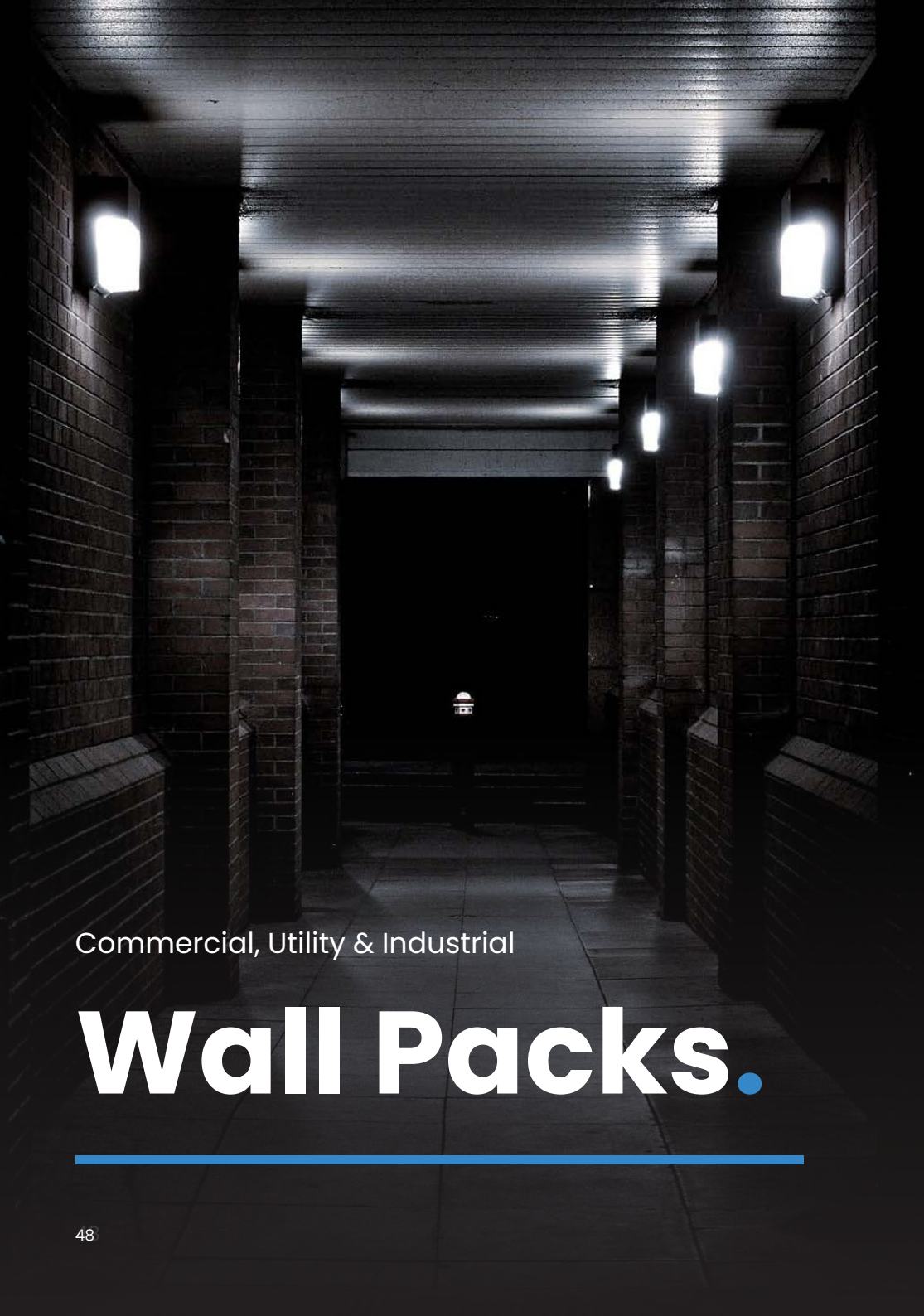
This range is ideal for many applications, with high lumen efficiency for enhanced energy saving and colour temperature selection allowing the desired lighting effect to be chosen on installation.

IP44 | 3000K/4000K/6000K | 5 Year Warranty | 120°



Code	Cut Out (mm)	Wattage	Lumens	lm/W	Ø x H (mm)
KFLATDL12	155	12	1250-1300	104-108	175 x 18
KFLATDL18	210	18	1900-1970	106-109	240 x 20
KFLATDL24	280	24	2500-2530	104-105	300 x 21





Commercial, Utility & Industrial

# Wall Packs.

## Hadi.

The Hadi is a robust IP65 wall pack, with 2 adjustable outputs delivering up to 2600 lumens and 3 colour temperature options built-in. Designed with a polycarbonate diffuser and multiple conduit entries and rear BESA mounting.

Available in a range of variants including photocell, emergency or microwave, to suit a number of applications.

- Power selectable 16W or 24W - Up to 112lm/W
- CCT selectable: 3000K, 4000K, 6000K
- Hinged front for easy access with captive stainless steel screws
- Multiple 20mm conduit entry points with loop in, loop out push fit terminals and rear BESA mounting



Code	Version	Wattage	Lumens	lm/W	Size (mm)
E02HDAC	Standard	16/24	1800-2600	108-113	310 x 265 x 122
E02HDAC1	2-in-1 Emergency	16/24	1800-2600	108-113	310 x 265 x 122
E02HDAC2	On/Off Microwave	16/24	1800-2600	108-113	310 x 265 x 122
E02HDAC3	2-in-1 Emergency, On/Off Microwave	16/24	1800-2600	108-113	310 x 265 x 122
E02HDAC6	Photocell	16/24	1800-2600	108-113	310 x 265 x 122
E02HDAC7	2-in-1 Emergency, Photocell	16/24	1800-2600	108-113	310 x 265 x 122

# Munio.

The Munio is a modern robust IP65 wall pack with three adjustable outputs and four colour temperature options built-in offering flexible lighting solutions for various applications.

The low glare ABS diffuser is designed to minimise upward light. Available in multiple pre-built variants including photocell and emergency to suit a number of applications.

- High lumen efficiency 133lm/W
- Power selectable 16W, 20W, 24W
- Colour temperature selectable 2700K, 3000K, 4000K, 6000K
- Hinged front for easy access
- 20mm BESA and conduit entry points with loop in, loop out push fit terminals
- Photocell version: preset integrated dusk till dawn operation
- Emergency version: emergency output 160lm



IP65 IK10 5 Year 50k Hours CCT 95°

Code	Version	Wattage	Lumens	lm/W	Size (mm)
E02MU3AC	Standard	16/20/24	2120-3195	133-134	300 x 250 x 165
E02MU3AC1	Emergency	16/20/24	2120-3195	133-134	300 x 250 x 165
E02MU3AC6	Photocell	16/20/24	2120-3195	133-134	300 x 250 x 165
E02MU3AC7	Emergency, Photocell	16/20/24	2120-3195	133-134	300 x 250 x 165



## LED Well Glass.

Flexible and decorative range of fittings ideally suited for outdoor applications requiring corner lights. Complete solution for flat wall or corner mounting. Bracket included for optional corner mounting. Polycarbonate construction in white or black finish with opal polycarbonate diffuser



IP65 | 4000K | 5 Year Warranty | 120°

Code	Version	Wattage	Lumens	lm/W	Size (mm)
WELLBKSTD	Standard, Black	10	818	82	214 x 122 x 197
WELLWHSTD	Standard, White	10	818	82	214 x 122 x 197
WELLBKPIR	PIR, Black	10	818	82	227 x 122 x 197
WELLWHPIR	PIR, White	10	818	82	227 x 122 x 197

## E27 Well Glass.

The well glass external wall fitting is available in a tough polycarbonate diffuser to give a similar style to a tradition glass lantern fixture. The fixture comes complete with an LED E27 lamp for ease of maintenance and an additional corner bracket accessory for corner wall positions to save on installing fixtures either side of the wall.



IP65 | 2700K | 5 Year Warranty | 220° Beam Angle

Code	Version	Wattage	Lumens	lm/W	Size (mm)
WGLEDBK	Standard, Black	9.5	810	85	240 x 220 x 130
WGLEDPWH	Standard, White	9.5	810	85	240 x 220 x 130

### Accessories

WELLDIFF	Replacement Polycarbonate Diffuser
----------	------------------------------------

## Slim Wall Pack.

Slim profile and durable wall pack, available with colour temperature selection to suit different applications. The design offers a contemporary slimmer update to the traditional wall pack available with further energy savings with an option of an integrated photocell.



IP65 | IK10 | 3000K/4000K/6000K | 5 Year Warranty | 120°

Code	Version	Wattage	Lumens	lm/W	Size (mm)
WPCSBK	Standard, Black	17	1580-1645	93-97	275 x 185 x 70
WPCSBKPC	Photocell, Black	17	1580-1645	93-97	275 x 185 x 70



Commercial, Utility & Industrial

# High Bay & Low Bay.

## Ara.

The Ara highbay offers a flexible solution delivering high levels of efficiency. As standard, the Ara comes complete with a front plug-in sensor port ready to use the plug in step dim Ara microwave sensor for additional energy savings or utilise the 0-10V connection for added control. The three power options built in offers flexibility to suit many retrofit and new warehouse applications.

- High efficiency 180lm/W
- Delivering up to 27,000lm
- Three power selections 90W, 120W, 150W – Set to 150W as standard
- Microwave sensor port for plug in Ara sensor (sensor available separately)
- Central integrated emergency LED array when in emergency mode
- Plug in 5W self-test emergency pack available
- 0-10V dimmable



IP65

IK10

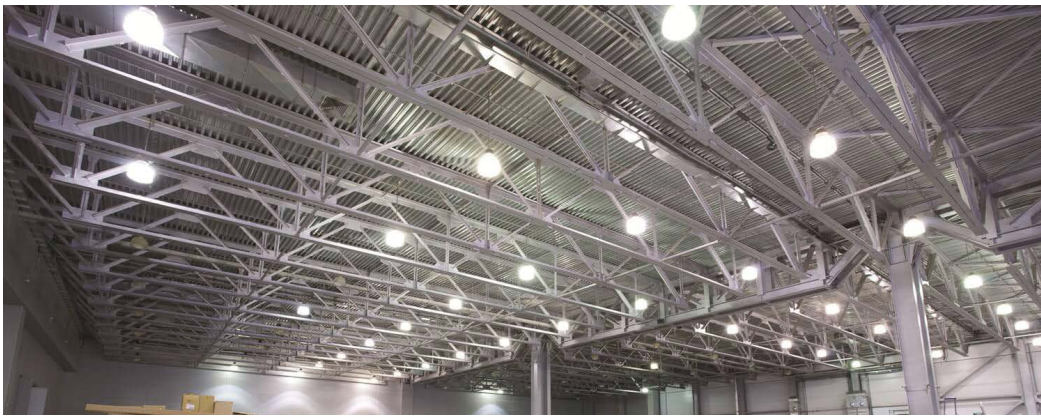
5 Year

50k Hours

120°

Code	Version	Wattage	Lumens	lm/W	Ø x H (mm)
E07ARA40	0-10V Dimmable	90/120/150	16200-27000	180	290 x 160
Accessories					
E07ARES	Ara Emergency 5W Self-Test Pack				
E07ARL90	Ara 90° Lens				
E07ARMW	Ara Microwave Sensor with Corridor Function				
E07ARRC	Ara Microwave Sensor Remote Control				
E07ARSM	Ara Surface Mount Bracket				





## Linear Low Bay Batten.

A simple and practical range of low bays for warehouse lighting, the frosted diffuser creates an even light distribution making it suitable for a range of applications including public spaces and utility areas. The low bay comes complete with a suspension pack or brackets are available separately.



IP40 | IK10 | 4000K | 5 Year Warranty | 120°

Code	Version	Wattage	Lumens	lm/W	Size (mm)
LEDLBAY30	Standard	30	3600	120	371 x 103 x 81
LEDLBAY50	Standard	50	6260	125	522 x 103 x 81
LEDLBAY80	Standard	80	9730	122	820 x 103 x 81
LEDLBAY120	Standard	120	14310	119	1220 x 103 x 81
Accessories					
LBB3050	Fixing Bracket for LEDLBAY30 / LEDLBAY50				
LBB80	Fixing Bracket for LEDLBAY80				
LBB120	Fixing Bracket for LEDLBAY120				





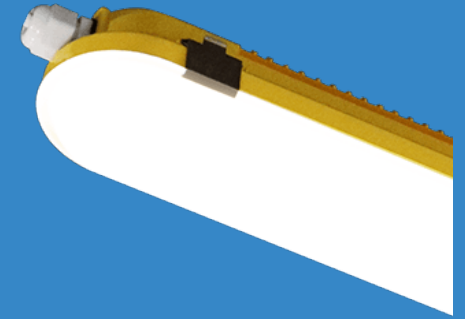
Commercial, Utility & Industrial

# Site Lights

## 110V Anti-Corrosive Batten.

The 110V anti-corrosive linear batten, available in 2ft, 4ft & 5ft comes complete with pre-drilled 20mm conduit entry points (capped), stainless steel retaining clips as standard and flexible bracket sliders to suit retrofit positioning.

- High lumen efficiency 120lm/W
- 20mm conduit entry at both ends and rear (ends predrilled and capped)
- Stainless steel clips - flat head screwdriver required to gain entry
- Supplied with IP cable grommet and 2x ceiling brackets
- Emergency version available
- 3 year warranty



IP65   IK08   3 Year   50k Hours   120°

Code	Version	Wattage	Lumens	lm/W	Size (mm)
E14WP2F*	2ft, 4000K	20	2400	120	650 x 85 x 79
E14WP4F*	4ft, 4000K	25	3105	124	1200 x 85 x 79
E14WP5F*	5ft, 4000K	35	4540	130	1500 x 85 x 79

Code Suffix*	Version
1	Emergency
CF	Cable Kit with Junction Box
MF	Cable Kit with Male/Female Connector

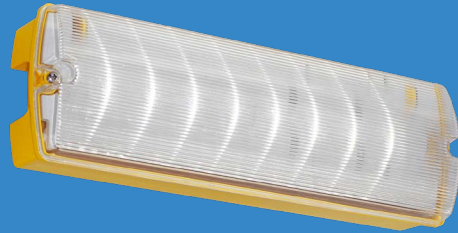


# 110V Bulkhead.

A robust rectangular emergency bulkhead designed for 110V applications, supplied in maintained mode with the option to convert to non-maintained operation as required. This energy-efficient 3W luminaire delivers 280 lumens in mains mode and 130 lumens in emergency mode, ensuring reliable illumination during power loss.

The unit is supplied with a full ISO 7010-compliant legend set, with additional directional sign options available.

- Polycarbonate construction
- Hinged gear tray
- Push terminals
- 20mm gland entries as standard
- 3 hour maintained mode configurable to non-maintained
- ISO 7010 legend set included
- 3 year product and battery warranty



IP65

IK08

3 Year

50k Hours

120°

Code	Version	Wattage	Lumens	lm/W	Size (mm)
E14BH1	Maintained Emergency, 6000K	3	280	93	355 x 110 x 70
Accessories					
LGDSET	Signs Directive Legend Sticker Set				



# 110V Twinspot.

The emergency 110V twinspot features two fully adjustable heads delivering a combined 400 lumen output for reliable emergency site lighting.

Designed for quick, hassle-free installation, this non-maintained unit is ideal for commercial and industrial applications.

- Polycarbonate construction
- Twin 2.5W LED adjustable and tiltable heads
- Push fit terminals
- 20mm side entry points
- 3 hour non-maintained manual test function



IP65

IK08

3 Year

50k Hours

120°

Code	Version	Wattage	Lumens	lm/W	Size (mm)
E14TW1	Non-maintained Emergency, 6000K	5	400	80	300 x 294 x 74



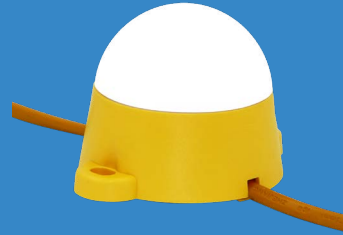
# 110V Festoon.

Coming  
August  
2026

Our connectable 110V festoon kit range includes 12m, 22m and 50m lengths. Each kit includes a male and female connector to daisy chain, and a 1m starter cable, allowing you to link them in any combination up to 200m.

This makes on-site extension quick and hassle-free.

- 12m, 22m and 50m lengths delivering up to 107lm/W
- Polycarbonate site light yellow housing
- 1m starter cable with industrial 3 pin plug
- L70 50,000 hours
- 3 year warranty



IP44

IK10

3 Year

50k  
Hours

120°

Code	Version	Wattage	Lumens	lm/W	Head Size (mm)
E14CF12	12m, 6000K	30	3140	105	75 x 75 x 63
E14CF22	22m, 6000K	50	5355	107	75 x 75 x 63
E14CF50	50m, 6000K	100	10710	107	75 x 75 x 63
Accessories					
E14F2WS	Two-Way Splitter for the Festoon Range				



# 110V Globe Light.

Coming  
August  
2026

The 110V Globe Light is perfect for construction sites, industrial areas, and outdoor workspaces. Delivering full 360° illumination, this versatile unit can stand freely, mount on a tripod, or hang securely using its integrated hook. An emergency version is also available.

- High lumen efficiency 100lm/W
- Pre-wired with 5m cable with plug
- 1x 110V power outlet for interlinking or power tools
- Built in suspension hook for mounting
- 3 year warranty



IP65

IK10

3 Year

50k  
Hours

120°

Code	Version	Wattage	Lumens	lm/W	Ø x H (mm)
E14GL	Standard, 6000K	30	3050	102	190 x 240
E14GL1	Battery Backup, 6000K	30	3050	102	190 x 240
Accessories					
E14TRI	Tripod Base for 110V Globe Light				



# 110V Uplight.

Ideal for construction sites, industrial areas, and outdoor workspaces, this upright delivers powerful 360° illumination. It comes pre-wired with a 5m cable with plug, and 110V power outlet for quick setup.

Designed with a convenient carry strap, it's the perfect lighting solution for plastering, construction, maintenance, and a wide range of general task applications.

- 360° light distribution
- High lumen efficiency 113lm/W
- Pre-wired with 5m cable with plug
- 1x 110V power outlet for interlinking or power tools
- Convenient carry straps

Coming  
August  
2026



IP54

IK10

3 Year

50k  
Hours

120°

Code	Version	Wattage	Lumens	lm/W	Size (mm)
E14UP	Standard, 6000K	72	8200	114	1495 x 280 x 220



# 110V Hoarding Light.

The hoarding light offers dual voltage capability operating on both 110V and 240V for maximum flexibility.

Choose from opal, prismatic, or red diffuser options. Supplied with a robust mounting bracket meaning the fitting can be installed vertically or horizontally

- Operates in both 110V and 240V
- CCT selectable 3000K, 4000K, 6000K
- Robust polycarbonate construction
- Diffuser options opal, prismatic, or red diffusers with a black base
- 7x 20mm cable entries
- Flexible mounting, supplied with a sturdy bracket for vertical or horizontal installation

Coming  
August  
2026



IP65

IK08

3 Year

50k  
Hours

CCT

120°

Code	Version	Wattage	Lumens	lm/W	Size (mm)
E14HLP	Prismatic Diffuser	110V-10W 240V-12W	1350-1500	125-135	240 x 110 x 59
E14HLO	Opal Diffuser	110V-10W 240V-12W	1250-1370	114-126	240 x 110 x 59
E14HLR	Red Diffuser	110V-10W 240V-12W	370-420	35-37	240 x 110 x 59



# 110V Floodlight.

Illuminate your work site with the 110V floodlight range. Ideal for construction sites, industrial zones and outdoor workspaces.

The floodlight is lightweight, easy to install, and built to withstand all weathers to ensure reliability.

- 20W, 45W and 90W versions delivering up to 115lm/W
- Die cast aluminium site light yellow housing
- Tempered glass diffuser
- Pre-wired with 1m H05RN-F cable
- Fully adjustable bracket
- L80 50,000 hours
- 3 year warranty



Coming  
August  
2026

IP65

IK07

3 Year

50k  
Hours

120°

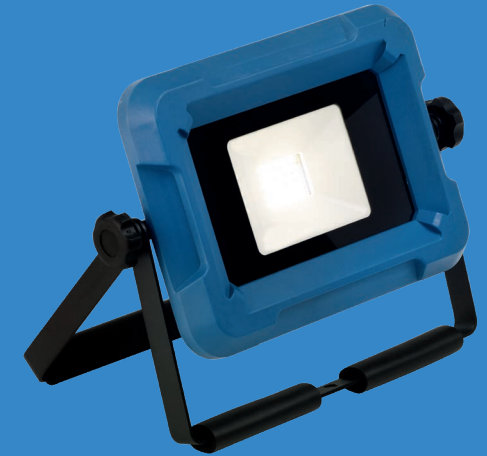
Code	Version	Wattage	Lumens	lm/W	Size (mm)
E14FL20	4000K	20	2250	113	160 x 108 x 25
E14FL45	4000K	45	5170	115	185 x 140 x 32
E14FL90	4000K	90	10400	116	240 x 180 x 33



# Robi.

The Robi is a compact and efficient portable rechargeable floodlight able to offer up to 2000 lumens with a fully adjustable bracket for flexibility in a number of internal and external applications. The Robi features a useful charge status indicator and the 50% power adjustment allows you to extend duration from 3 hours to over 5 hours.

- Switchable power output 100% 2000lm 50% 1000lm at 4000K
- 3 hour battery duration at 100% 5.5 hours at 50%
- Aluminium housing, ABS frame and tempered toughened glass
- 3 hour charge - 4 blue LEDs to indicate charge status
- USB-C to USB 1m cable included 5V 2A input
- Fully adjustable bracket
- Integral 3.7V 4400mAh Li-Ion battery



IP54

IK05

2 Year

20k  
Hours

110°

Code	Version	Wattage	Lumens	lm/W	Size (mm)
E06RB2040	4000K	10/20	1200-2200	110-120	245 x 215 x 45



# 110V A Frame.

The 110V anti-corrosive linear batten with A-Frame, comes complete with two integrated 110V sockets, and a 5m cable and plug in socket with cable storage facility.

- High lumen efficiency 120lm/W
- IP65 IK08 rated
- Supplied with 5m cable and pre-wired plug
- Includes 2x 110V power outlets for connecting more fittings or power tools
- 2x cable tidy hooks on the stand
- Stainless steel clips - flat head screwdriver required to gain entry
- Emergency version available
- 3 Year Warranty



IP65

IK08

3 Year

50k Hours

120°

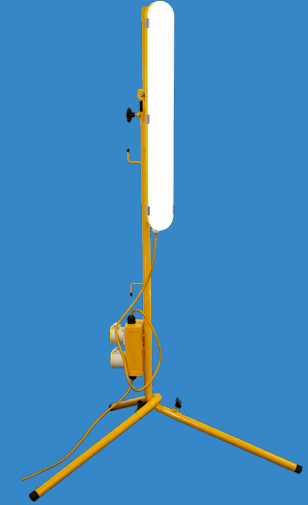
Code	Version	Wattage	Lumens	lm/W	Size (mm)
E14AF	Standard, 4000K	20	2400	120	965 x 650 x 306
E14AFI	2-in-1 Emergency, 4000K	20	2400	120	965 x 650 x 306



# 110V Tripod.

The 110V tripod and anti-corrosive linear batten, available in 2ft & 5ft comes complete with pre-wired 5m cable with plug, stainless steel retaining clips as standard. The tripod is equipped with 2x 110V power outlets.

- High lumen efficiency 120lm/W
- Pre-wired with 5m cable with plug
- Stainless steel clips - flat head screwdriver required to gain entry
- Tripod with 2x 110V power outlets
- Emergency version available
- 3 year warranty



IP44

IK08

3 Year

50k Hours

120°

Code	Version	Wattage	Lumens	lm/W	Batten (mm)	Tripod (mm)
E14WPT2F	2ft, 4000K	20	2400	120	650 x 85 x 79	1165 x 775 x 775
E14WPT2FI	2-in-1 Emergency, 2ft, 4000K	20	2400	120	650 x 85 x 79	1165 x 775 x 775
E14WPT5F	5ft, 4000K	35	4540	130	1750 x 250 x 82	1165 x 775 x 775
E14WPT5FI	2-in-1 Emergency, 5ft, 4000K	35	4540	130	1750 x 250 x 82	1165 x 775 x 775

AUG 2020





Residential

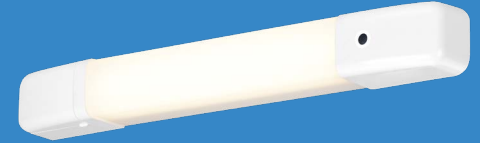
# Bathroom Lighting.

## Atlantic.

Coming  
August  
2026

The Atlantic dual voltage shaver light delivers up to 900 lumens and three colour temperature selections. Designed to suit damp locations it comes complete with a self-close cover to the shaver socket and a opal diffuser for even light distribution.

The capacitive touch switch removes the need for a pull cord and the 'press to dim' function enables the user to adjust the brightness, a versatile shaver socket to suit single light applications or to compliment existing lighting schemes.



- Dual voltage, switch between 115V - 230V
- Self-close socket cover and opal diffuser
- CCT selectable 3000K, 4000K, 6500K
- Long press to adjust brightness
- White halo illuminated capacitive switch, halo can be disabled

IP44

5 Year

25k  
Hours

CCT

120°

Code	Version	Wattage	Lumens	lm/W	Size (mm)
E09ATCC	Chrome	11	900-950	82-86	510 x 62 x 60
E09ATCW	White	11	900-950	82-86	510 x 62 x 60



## LED Dual Voltage Shaver Light.

Integrated LED shaver light with removable chrome caps to suit different styles.

IP44 | 3000K | 5 Year Warranty | 120°



Code	Version	Wattage	Lumens	lm/W	Size (mm)
LEDSH44	LED	5.5	410	75	390 x 60 x 65

## Dual Voltage Shaver Light with LED Lamp.

A versatile solution that offers efficient lighting as well as a convenient shaving accessory sockets. This clean and modern shaver light has a replaceable LED lamp for easy ongoing maintenance.

IP20 | 3000K | 5 Year Warranty | 120°



Code	Version	Wattage	Lumens	lm/W	Size (mm)
LEDSHDVO	S15 Lamp Included	6	400	67	435 x 57 x 65

## Designer Style Over Mirror Light.

Contemporary designed alternative to a standard over-mirror light. Available in chrome or white to suit different design styles, integrated push switch for a sleek finish. The front opal diffuser offers well distributed light output to suit commercial and residential solutions.

IP21 | 3000K | 5 Year Warranty | 120°



Code	Version	Wattage	Lumens	lm/W	Size (mm)
LEDOM5CR	Chrome Over Mirror	5	530	106	480 x 90 x 50
LEDOM5WH	White Over Mirror	5	530	106	480 x 90 x 50
LEDSH6CR	Chrome Shaver Light	6	530	88	480 x 90 x 50
LEDSH6WH	White Shaver Light	6	530	88	480 x 90 x 50

## 10W LED Over Mirror Light.

This stylish fitting is the perfect solution to provide additional task lighting in many applications. The fitting provides excellent light output and is a superb energy efficient and long-life alternative to fluorescent products.

IP44 | 3000K | 5 Year Warranty | 120°



Code	Version	Wattage	Lumens	lm/W	Size (mm)
OMLED10	Pull Cord	10	1010	101	435 x 36 x 55

## LED Mirror.

LED mirror light with dual voltage shaver socket with pull cord offering a simple upgrade to any bathroom environment. The two light apertures create a soft warm lighting effect.

IP44 | 3000K | 5 Year Warranty | 110°



Code	Version	Wattage	Lumens	lm/W	Size (mm)
LEDMIRROR	Pull Cord	10.3	715	69	500 x 400 x 60

## Pacific Ceiling Light.

IP44 | 3100K | 5 Year Warranty | 120°



Code	Version	Wattage	Lumens	lm/W	Ø x H (mm)
PACIFIC12	Standard	12	800	67	305 x 80



Residential

# Cabinet Lighting.

## Linear Under Cabinet LED Strip.

Linkable LED cabinet lights inclusive of accessories for easy installation. Use the sliding switch to choose between warm, cool or daylight white light to suit the requirement or preference.



IP20 | 3000K/4200K/6500K | 5 Year Warranty | 130°

Code	Version	Wattage	Lumens	lm/W	Size (mm)
LINKCS4	288mm	4	380-390	95-98	288 x 30 x 22
LINKCS9	549mm	9	896-905	100-101	549 x 30 x 22
LINKCS13	849mm	13	1264-1295	97-100	849 x 30 x 22
Accessories					
LINKL05	0.5m White Link Lead for Use with the LINKCS Range				

## Cabinet Downlight.

Alternative energy efficient option to a traditional halogen lamp ideal for cabinet or kitchen under-cabinet lighting, giving a warm white ambient light for functional and subtle lit appearance.



IP20 | 3000K | 5 Year Warranty

Code	Version	Wattage	Lumens	lm/W	Beam (°)	Size (mm)
CLEDCIR	Nickel, Circular	1.7	160	94	100	∅ 70 x 33
CLEDCIRWH	White, Circular	1.7	160	94	100	∅ 70 x 33
CLEDTRI	Nickel, Triangle	1.7	160	94	90	120 x 120 x 41

## LED Super Flat Strip Light.

Ultra low power consumption with excellent light output. The inclusion of a link lead and butt connector allows continuous linear, spaced linear or radial installations.



IP20 | 3000K | 5 Year Warranty | 120°

Code	Version	Wattage	Lumens	lm/W	Size (mm)
SFLWW9	Standard	1.8	230	128	350 x 18 x 9
SFLWW15	Standard	3	360	120	550 x 18 x 9
SFLDR36	Driver	36	-	-	140 x 30 x 45



Residential

# Spotlights.

## GU10 Single Spotlight.

Single spotlight is fitted on a central base with fully adjustable head an ideal solution for replacing pendant lighting or creating more focused lighting where required.

1 Year Warranty



Code	Version	Ø x H (mm)
SPOT1CR	Standard, Chrome	85 x 110
SPOT1SN	Standard, Nickel	85 x 110
SPOT1WH	Standard, White	85 x 110

## GU10 Twin Bar Spotlight.

Contemporary design for a stylish interior spotlight solution with 2 adjustable heads to for directional light to suit a number of applications.

1 Year Warranty



Code	Version	Size (mm)
SPOT2CR	Standard, Chrome	140 x 355 x 50
SPOT2SN	Standard, Nickel	140 x 355 x 50
SPOT2WH	Standard, White	140 x 355 x 50

## GU10 Triple Bar Spotlight.

Contemporary design for a stylish interior spotlight solution with 3 adjustable heads to for directional light to suit a number of applications.

1 Year Warranty



Code	Version	Size (mm)
SPOT3CRBAR	Standard, Chrome	140 x 565 x 50
SPOT3SNBAR	Standard, Nickel	140 x 565 x 50
SPOT3WHBAR	Standard, White	140 x 565 x 50



### GU10 Quad Split Bar Spotlight.

Contemporary design for a stylish interior spotlight solution with 4 adjustable heads to for directional light to suit a number of applications.

1 Year Warranty



Code	Version	Size (mm)
SPOT4CR	Standard, Chrome	160 x 815 x 50
SPOT4SN	Standard, Nickel	160 x 815 x 50
SPOT4WH	Standard, White	160 x 815 x 50

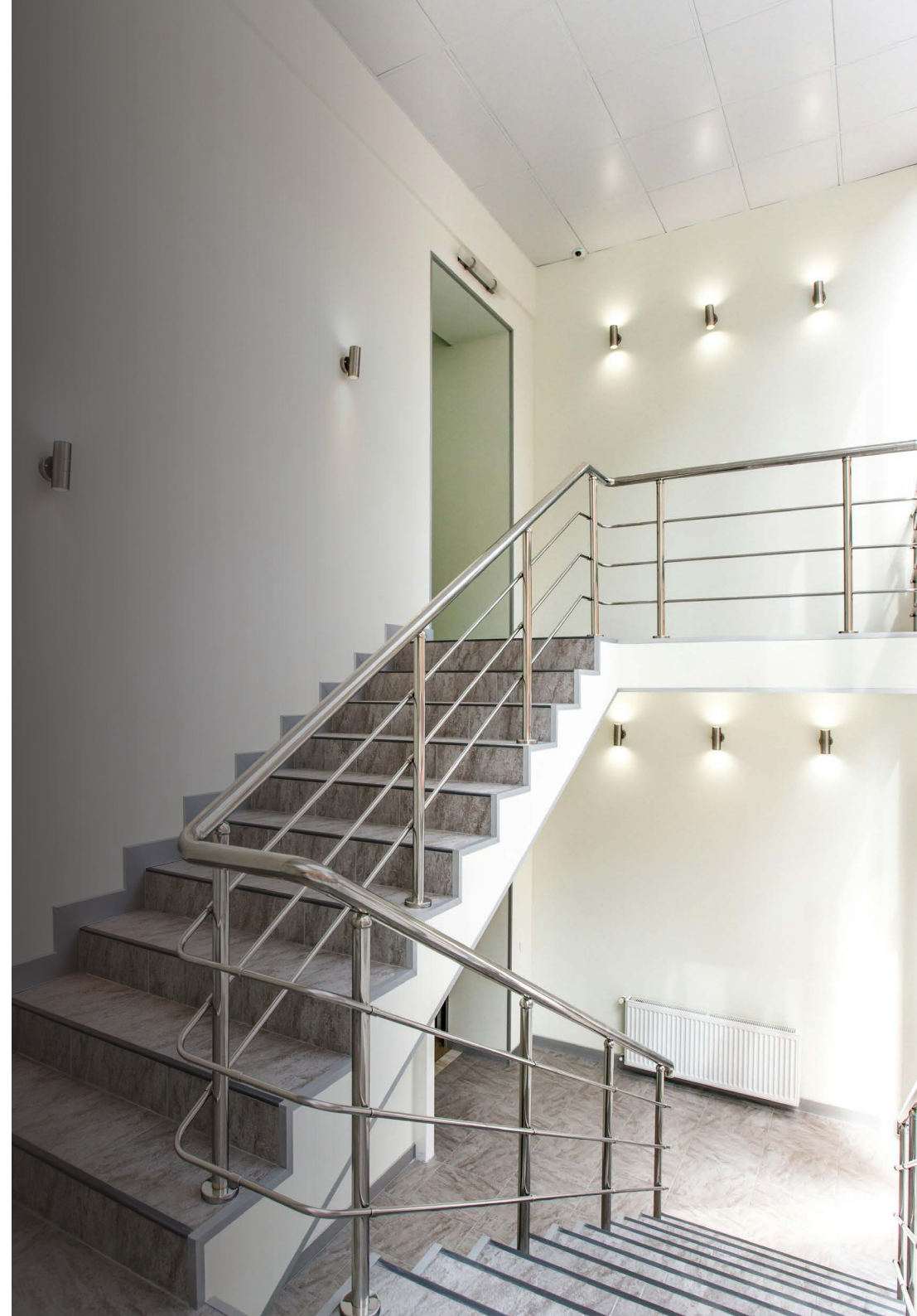
### GU10 Triple Plate Spotlight.

Triple spotlight is fitted on a central base with fully adjustable heads an ideal solution for replacing pendant lighting or creating more focussed lighting where required.

1 Year Warranty



Code	Version	Ø x H (mm)
SPOT3CRPL	Standard, Chrome	150 x 110
SPOT3SNPL	Standard, Nickel	150 x 110
SPOT3WHPL	Standard, White	150 x 110





Residential

# Residential Downlights.

## Fire Rated Downlight.

The FIRELEDPCS is a stylish, versatile and durable fitting with dimmable LED, selectable power and selectable CCT, plus fire rating for standard and I-Joist ceilings.

The FIRELEPCPS has a range of bezel finishes to suit the installation design and user preference. An ideal luminaire for residential properties.

- 60mm cut out diameter
- Fire-rated for individual 30, 60 and 90 minute ceiling types. Fire-rated for I-Joist ceiling types; separate 30 and 60 minute testing
- Power selectable rear-mounted dip switch
- CCT selectable; 3000K, 4200K or 6500K
- Suitable for loop-in loop-out connection



Code	Version	Cut Out (mm)	Wattage	Lumens	lm/W	Ø x H (mm)
FIRELEDPCS	Mains-Dimmable	60	5/8	475-849	93-106	86 x 48
Accessories						
FIRETRBK	Black Trim					
FIRETRCR	Polished Chrome Trim					
FIRETRSN	Brushed Nickel Trim					



## Mains Low Voltage Ceiling Downlight Converter.

Converts traditional mains R50, R64 and R80 downlight and eyeball dimensions to modern GU10 or low voltage lighting: allows use of modern light source without expensive repairs & decoration.



IP20 | 1 Year Warranty

Code	Version	Ø x H (mm)
CR80CR	Standard, Chrome	150 x 125
CR80SN	Standard, Nickel	150 x 125
CR80WH	Standard, White	150 x 125



## GU10 Mains Shower Light Converter.

Mains rated GU10 Shower light available in chrome, nickel and white suitable for installations within zones 1 and 2. The traditional downlight offers simple maintenance compared to integrated LED offering easy lamp change suitable for hole cut outs of 70mm.



IP65 | 1 Year Warranty

Code	Version	Wattage	Ø x H (mm)
SLGUCR	Standard, Chrome	50	83 x 40
SLGUSN	Standard, Nickel	50	83 x 40
SLGUWH	Standard, White	50	83 x 40





Residential

# Garden Lighting.

## Heki.

The Heki GU10 wall light is a simple and contemporary design to update garden or wall lighting. This stylish light is available in single or twin variations, and comes with GU10 lamp holders for the end user to decide on lit effect and brightness required shining light up and down a façade.

- Requires 1x 7W max. GU10 LED lamp per lampholder
- Contemporary design with halo design diffuser
- Polypropylene construction
- Easy lamp change



Code	Version	Size (mm)
E11HK1B	Single	107 x 86 x 86
E11HK2B	Twin	172 x 86 x 86



# Heki Steel.

The Heki GU10 IP44 wall light is a simple and contemporary solution for enhancing exterior walls and garden spaces. Available in black and stainless steel the range includes single, twin and PIR versions.

Installed with GU10 lampholders enables the end user to choose the desired lamp and easy ongoing maintenance

- GU10 lampholder (GU10 not included)
- Black or stainless steel 304 construction
- 100° PIR version available with adjustable lux level and time adjustment from 10 seconds to 5 minutes

Coming  
Sept  
2026



5 Year

50k  
Hours

Code	Version	Finish	Size (mm)
E11H1B	Single	Black	120 x 100 x 85
E11H1BPIR	PIR, Single	Black	155 x 105 x 70
E11H2B	Twin	Black	160 x 100 x 85
E11H2BPIR	PIR, Twin	Black	215 x 105 x 70
E11H1S	Single	Stainless Steel	120 x 100 x 85
E11H1SPIR	PIR, Single	Stainless Steel	155 x 105 x 70
E11H2S	Twin	Stainless Steel	160 x 100 x 85
E11H2SPIR	PIR, Twin	Stainless Steel	215 x 105 x 70



# Suta.

Suta is a sleek LED surface mount brick light designed to deliver subtle, reliable illumination for outdoor spaces.

Combining modern styling with durable construction, Suta enhances pathways, walls, and façades with efficient, long-lasting light.

- Direct and Low glare options available
- CCT selectable 3000K, 4000K, 6000K
- Grey or white trim option available

Coming  
Sept  
2026



IP65

5 Year

CCT

Code	Version	Wattage	Lumens	lm/W	Beam (°)	Size (mm)
E11SULGB	Direct Surface Guide Light, Black	4	400	100	140	230 x 80 x 25
E11SULGW	Direct Surface Guide Light, White	4	400	100	140	230 x 80 x 25
E11SULGG	Direct Surface Guide Light, Grey	4	400	100	140	230 x 80 x 25
E11SUDGB	Low Glare Surface Guide Light, Black	2	100	50	60	230 x 80 x 25
E11SUDGW	Low Glare Surface Guide Light, White	2	100	50	60	230 x 80 x 25
E11SUDGG	Low Glare Surface Guide Light, Grey	2	100	50	60	230 x 80 x 25



## LED Deck/Plinth Light.

Mains voltage LED compact recessed fixture equally useful for exterior use such as deck lighting, or for interior use recessed into plinths. Complete with colour filters to suit different applications and pre-wired with 1 metre rubber cable.



IP65 | 4000K | 1 Year Warranty | 120°

Code	Version	Wattage	Lumens	lm/W	Ø x H (mm)
DECKLED	LED	2	205	103	55 x 110



## GU10 Deck Light With Stainless Steel Bezel.

GU10 deck light with stainless steel bezel with pre-wired 1m rubber cable for easy loop out facility from the 3 way terminal box. An ideal solution for uplighting within decking to highlight border areas, GU10 lamp holder allows easy maintenance for lamp replacement.



IP68 | 1 Year Warranty

Code	Version	Wattage	Ø x H (mm)
GDL50SS	GU10	50	110 x 110



## Louvred Bollard.

1100mm black louvred bollard, constructed out of aluminium. The louvres create a discrete lighting effect. Suitable for surface or root mounting. The unit is complete with a E27 lamp holder to allow the end user to decide on lamp type and output up to a maximum of 100W.



IP44 | 1 Year Warranty

Code	Version	Wattage	Ø x H (mm)
B1100BKNL	E27	100	170 x 1100

## Bricklight with Stainless Steel Frame.

A modern design that gives an instant cool white light. Ultra low energy consumption and prolonged lamp life. An opal diffuser with optional stainless steel frame, offering a soft, stylish lighting effect.



IP65 | 6000K | 5 Year Warranty | 120°

Code	Version	Wattage	Lumens	lm/W	Size (mm)
BRICKLED	LED	4.5	285	63	105 x 233 x 75

## Stainless Steel Wall Light.

Stainless Steel wall light is available in single, twin or single adjustable versions for uplighting and downlighting wall mounting applications, suitable for GU10 lamp heads for easy installation and replacement.



IP44 | 1 Year Warranty

Code	Version	Size (mm)
SSWLDIR	Single Adjustable	155 x 95 x 95
SSWLSING	Single Up or Down	120 x 95 x 60
SSWLTWIN	Twin Up and Down	156 x 95 x 60



Residential

# Lanterns.



## Full Lantern.

The full lantern is designed in tough polycarbonate to replace a traditional lantern or to update an outside space with a timeless style. The lantern comes with an E27 base for ease of maintenance. Requires 1x suitable ES lamp (not included).

IP44 | 1 Year Warranty



Code	Version	Wattage	Size (mm)
L60B	Standard, Black	60	374 x 177 x 228
PIRL60BK	PIR, Black	60	374 x 177 x 228

## Half Lantern.

The half lantern is designed in tough polycarbonate to replace a traditional lantern or to update an outside space with a timeless style. The lantern comes with an E27 base for ease of maintenance. Requires 1x suitable ES lamp (not included).

IP44 | 1 Year Warranty



Code	Version	Wattage	Size (mm)
HL60B	Standard, Black	60	360 x 163 x 100
HL60WH	Standard, White	60	360 x 163 x 100
PIRHL60B	PIR, Black	60	360 x 163 x 100
PIRHL60WH	PIR, White	60	360 x 163 x 100

## LED Full Lantern.

Energy efficient black LED lantern alternative to a traditional lantern with a tough polycarbonate construction.

IP44 | 3000K | 5 Year Warranty | 120°



Code	Version	Wattage	Lumens	lm/W	Size (mm)
VECOFBK	Standard, Black	7	420	60	400 x 175 x 220
VECOFPIRBK	PIR, Black	7	420	60	400 x 175 x 220



## LED Half Lantern.

Energy efficient black LED lantern alternative to a traditional lantern with a tough polycarbonate construction.

IP44 | 3000K | 5 Year Warranty | 120°



Code	Version	Wattage	Lumens	lm/W	Size (mm)
VECOHKBK	Standard, Black	7	510	73	360 x 175 x 105
VECOHPIRBK	PIR, Black	7	420	60	360 x 175 x 105





# Heating.

## 2kW Plinth Heater.

The electric plinth heater is an ideal solution for compact areas. It features 2 heat settings and adjustable wall mounted thermostat that can wirelessly control the heater. A handy remote control and manual switch on the front of the heater allows for manual control.

- 2 heat settings 2kW and 1kW, and fan only
- Programmable mains powered RF thermostat included
- Thermostat operation includes automatic, manual and two weekly period settings with 3 on/off periods per day
- Wireless pairing between wall thermostat and control module
- Hand-held remote control for quick and easy control
- Open window and frost protection
- Fitted with 1.5m cable to RF receiver
- Optional brown and white fascias included



1 Year

Code	Version	Wattage	Size (mm)
E12PH2	Wired Thermostat	1000/2000	500 x 225 x 100
E12PH2R	Remote Control Thermostat	1000/2000	500 x 225 x 100
Accessories			
E12PHBF	Black Fascia for E12PH2/E12PH2R		

Sept 2026



# Panel Convactor Heater.

The digital panel convactor heater offers a slimline profile and a large digital LED display.

Free standing or wall mountable, it features an adjustable thermostat, programmable timer and open window detection. Available in three sizes, 1kW, 1.5kW, and 2kW to suit rooms of all sizes.

- 1kW, 1.5kW and 2kW variations
- White body with wall brackets or feet with optional wheels
- Programmable 24/7 timer
- Open window detection
- LED display for easy operation
- IP24
- Fitted with 1.5m flex and 10A BS 1363 plug
- Meets Lot20 requirements



IP24

1 Year

Code	Version	Wattage	Size (mm)
E12WP1	Digital	1000	475 x 420 x 80
E12WPI5	Digital	1500	615 x 420 x 80
E12WP2	Digital	2000	755 x 420 x 80



# 2kW Portable Convactor Heater.

The standard convactor heater has 3 settings built in with an adjustable thermostat and overheat protection. A traditional range offering simple heating options for portable applications.

- White body with black plastic for carry handles and feet
- Illuminated control switches
- Fitted with 1.5m flex and 10A BS 1363 plug
- Option to have a 24-hour timer



1 Year

Code	Version	Wattage	Size (mm)
E12PCN2	Standard	750/1250/2000	565 x 380 x 170
E12PCNT2	24hr Timer	750/1250/2000	565 x 380 x 170



# Digital Downflow Heater.

The electric digital downflow heater is an ideal solution for bathroom heating.

Compact in size and wall mountable it features 2 heat settings, an adjustable thermostat, programmable timer and open window detection, along with remote control to enable flexible height positioning.

- 2 heat settings 2kW and 1kW, and fan only
- Programmable 24/7 timer
- Open window detection
- LED display and remote control for easy operation
- IP22 for use within bathrooms
- Fitted with 1.5m flex
- Meets Lot20 requirements



IP22

1 Year

Code	Version	Wattage	Size (mm)
E12DF2	Digital	1000/2000	285 x 260 x 164



# 2kW Adjustable Downflow Heater.

2kW adjustable downflow heater with run back timer utilising fire retardant polycarbonate and ABS construction.

Pull cord provided for simple control and dip switch controls to adjust power output between 1kW and 2kW to suit a range of room size and to adjust the run back timer

- Up to 2kw heat output for fast heating
- Mains indicator light & pull cord on/off switch
- Thermal cut out
- Internal load switch 1kW / 2kW: allows output adjustment to suit room size
- Up to 35 minute runback timer - adjustable upon installation
- Select desired mode of operation using the dip switches



IP21

1 Year

Code	Version	Wattage	Size (mm)
DFHT2KW	Pull Cord	1000/2000	239 x 245 x 140



### 3kW Screen Heater.

3kW screen heater (air curtain) pre-wired with a 1.25m mains lead for easy installation. Three settings are available: Switch 1: on/off fan only (40W), Switch 2: on 1500W, Switch 3: on 3000W. Adjustable bracket enables installation vertically, horizontally or angled to suit a range of applications.



IP20 | 1 Year Warranty

Code	Version	Wattage	Size (mm)
SH3WH	3kW	40/1500/3000	105 x 580 x 185

### Tubular Heater.

IP44 tubular heater pre-wired with a 1m mains lead for easy installation. An efficient solution for background heating and frost protection.



IP44 | 1 Year Warranty

Code	Version	Wattage	Size (mm)
TH1	1ft	60	305 x 105 x 74
TH2	2ft	120	600 x 105 x 74
TH3	3ft	180	915 x 105 x 74
TH4	4ft	240	1220 x 105 x 74
Accessories			
TRG1FT		1ft Mesh Guard	
TRG2FT		2ft Mesh Guard	
TRG3FT		3ft Mesh Guard	
TRG4FT		4ft Mesh Guard	



# Hand Dryers.

## 1.8kW Automatic Hand Dryer.

1.8kW high performance automatic hand dryer with an airflow of 2.6m<sup>3</sup>/min and an air speed 17.8m/s, provided with a 1 metre mains lead for easy installation. Cast aluminium tough vandal resistant design with a simple white finish is an ideal solution for a range of environments and applications.

IPX1 | 1 Year Warranty



Code	Version	Wattage	Airflow (m <sup>3</sup> /min)	Air Speed (m/s)	Size (mm)
HDA-1800	White	1800	2.6	17.8	240 x 265 x 195

## 2.5kW Automatic Hand Dryer.

2.5kW high performance automatic hand dryer with an airflow of 4.5m<sup>3</sup>/min and an air speed 30m/s. Cast aluminium tough vandal resistant design with a stainless steel effect is an ideal solution for a range of environments and applications.

IPX1 | 1 Year Warranty



Code	Version	Wattage	Airflow (m <sup>3</sup> /min)	Air Speed (m/s)	Size (mm)
SSHDA-2500	Aluminium	2500	4.5	30	260 x 240 x 140

# Accessories.



## Waterproof Accessory Box.

Waterproof grey gang accessory box made of polycarbonate for tough impact and corrosion resistance, with locking facility designed for 1 or 2 gang sockets with cable entry from base of lid.



IP65 | 1 Year Warranty

Code	Version	Construction Materials	Size (mm)
SSBE	Single	Polycarbonate	100 x 140 x 80
TWSBE	Twin	Polycarbonate	160 x 140 x 80

## Adaptable Boxes/Enclosures.

Grey waterproof enclosure. ¼ turn twist screw down cover, location holes provided for use with 5 pole connector 397/5.



Code	Construction Materials	Size (mm)
222-L	ABS	110 x 110 x 65
223-L	ABS	185 x 120 x 80
224-L	ABS	230 x 180 x 130
225-L	ABS	200 x 160 x 80
JSL242	ABS	305 x 350 x 190
JSL244	ABS	410 x 440 x 190

Accessories			
397/5	5 Pole Connector for 222-L	ABS	29 x 44 x 44
JSL242BP	Mounting Backplate	ABS	280 x 330 x 5
JSL244BP	Mounting Backplate	ABS	390 x 430 x 5

## Surface Mounted Bell Push.

Interchangeable black or white wired surface mounted bell push to reduce stock requirements, fixing connections concealed at rear of fitting.

IP20 | 1 Year Warranty



Code	Version	Construction Materials	Size (mm)
BPWB	Standard	Polycarbonate	55 x 28 x 18
BPLWB	Illuminated Button	Polycarbonate	55 x 28 x 18

## Door Chime with Built-in Transformer.

The standalone door chime is for domestic installation up to 15m range, with a modern neutral design, the transformer is integrated for a neater and faster installation.

IP20 | 1 Year Warranty



Code	Version	Construction Materials	Size (mm)
TCWH	White	ABS	170 x 105 x 45

## Battery/Transformer Operated Chime.

Simple modern designed battery operated door chime with an option to work with transformer BT4812 when using with the illuminated bell push BPLWB.

IP20 | 1 Year Warranty



Code	Version	Construction Materials	Size (mm)
DCIWH	White	ABS	170 x 105 x 45

## Multi-Voltage Bell/Chime Transformer.

Multi Voltage Bell / Chime with 4, 8 and 12V tapings to suit most bells and chimes with a installation distance of 15m, 1A rated in a nylon construction with thermal cut out.

IP20 | 1 Year Warranty



Code	Version	Construction Materials	Size (mm)
BT4812	White	Nylon	90 x 54 x 43

## TRS Gland.

20mm TRS Cable Gland with Locking Nut, accommodates cables from 8-13mm and fire retardant to 850°C, suitable for maintaining IP rating sealing around cable entries on a range of applications such as electrical boxes, lighting controls and light fixtures.

IP68 | 1 Year Warranty



Code	Version	Construction Materials	Size (mm)
20TRSBK	Black	Glass Filled Nylon	30 x 30 x 35
20TRSG	Grey	Glass Filled Nylon	30 x 30 x 35
20TRSWH	White	Glass Filled Nylon	30 x 30 x 35



## Converter Socket.

Convert 1 or 2 gang applications to more gang sockets, offering further flexibility to the end user, with a tough polycarbonate construction and surge protection built in.

1 Year Warranty



Code	Version	Construction Materials	Size (mm)
CONVERT2	1 gang to 2 gang	Polycarbonate	88 x 147 x 26
CONVERT4	1 or 2 gang to 4 gang	Polycarbonate	88 x 258 x 25

## Single Fused A Rated RCD Spur.

Single unswitched white type A rated RCD socket to ensure tripping for residual AC and pulsating DC currents. Simple to install, fused RCD spur, perfect for electrical protection of permanently installed products such as refrigeration units and hand dryers.

1 Year Warranty



Code	Version	Construction Materials	Size (mm)
SSARCDWH	Single Gang	Polycarbonate	86 x 86 x 35

## Twin Unswitched A Rated RCD Socket.

Simple to install 2-gang unswitched passive RCD socket with durable exterior, perfect for providing local electrical protection in garages, workshops or warehouses.

1 Year Warranty



Code	Version	Construction Materials	Size (mm)
TWSARCDWH	Two Gang White	Polycarbonate	86 x 146 x 38
TWSARCDMC	Two Gang Metal Clad	Steel	86 x 146 x 45

## GU5.3 LV Spare Lampholder.

GU5.3 Low Voltage Lampholder with silicon braided heat resistant 150mm cable.



Code	Version	Construction Materials	Ø x H (mm)
AWFO8	GU5.3	Ceramic	17 x 160

## GU10 Spare Lampholder.

GU10 Lampholder with silicon braided heat resistant 190mm cable.



Code	Version	Construction Materials	Ø x H (mm)
GU10LH	GU10	Ceramic	32 x 213

## Plug in Ceiling Rose.

Plug in white ceiling rose rated to 6 amps with 4 terminals built in enabling an extra live connection, designed for BESA box mounting.

Pre-wired version comes with a 2m, heat resistant 4 core flex.

IP20 | 1 Year Warranty



Code	Version	Construction Materials	Ø x H (mm)
CR10	Unwired	Polycarbonate	83 x 36
CR10PW	Pre-Wired	Polycarbonate	83 x 36

## Waterproof Electrical Connector.

3 pole black waterproof electrical connector, creating a way to continue external connections, rated to 450V 32A and compatible with 0.5mm<sup>2</sup> - 4mm<sup>2</sup> cable sizes.



IP68

Code	Version	Construction Materials	Size (mm)
IPCONNECT	3 Pole	Nylon	Ø 22 x 100

## Lighting Connector Box.

3 way white lighting connector box, cord restraint at both entries.



IP20 | White

Code	Version	Construction Materials	Size (mm)
CB5A	5 Amp	Nylon	65 x 40 x 22
CB15A	15 Amp	Nylon	72 x 48 x 27

## Push to Break Autoswitch.

Push To Break 1 Amp momentary push switch, able to control upto 25W of LED load, applications include areas such as cupboard lighting, when the door opens the light switches on.



IP20 | 1 Year Warranty

Code	Version	Construction Materials	Size (mm)
XS63W	1 Amp	Thermoplastic	55 x 34 x 20



# Lighting Controls.

## Time Delay Push Switch.

Electronic time delay push switch compatible with LED, fluorescent and incandescent loads, with a red halo indication light around the switch for easy location, time adjustment from 12 seconds to 12 minutes with no neutral required to replace an existing switch.



IP20 | White | 1 Year Warranty

Code	Version	Wattage	Construction Materials	Size (mm)
PUSHLED	LED Compatible	300	ABS	85 x 85 x 22

## Electronic Outdoor Time Delay Switch.

The outdoor time delay switch is an ideal solution for a number of applications including lighting and heating. Different delay functions from 2 seconds to 2 hours firstly allows for energy saving and also flexibility to suit hospitality and utility applications.



IP66 | 1 Year Warranty

Code	Version	Construction Materials	Size (mm)
TLS68EX	External	ABS	80 x 110 x 70

## External PIR Sensor.

External adjustable PIR detector able to control upto 1000W of incandescent loads and 200W LED loads, with up to 12 metre detection range and time adjustment from 5 seconds upto 5 minutes.



IP44 | 1 Year Warranty

Code	Version	Wattage	Angle (°)	Construction Materials	Size (mm)
PIR110BK	Black	200	110	ABS	150 x 130 x 95
PIR180BK	Black	200	180	ABS	150 x 130 x 95
PIR180WH	White	200	180	ABS	150 x 130 x 95

## External 360° PIR Sensor.

Standalone external white PIR 360° sensor, vertical and horizontal adjustable PIR head with an optional corner bracket for detection areas around the corner of buildings. The sensor has a load capacity of 1000W of incandescent lamps and 150W of LED loads, time and lux level adjustable.



IP44 | 1 Year Warranty

Code	Version	Wattage	Angle (°)	Construction Materials	Size (mm)
EX360PIRWH	White	150	360	ABS	150 x 80 x 75

## NEMA Socket Electronic Photocell Kit.

NEMA socket electronic photocell kit, supplied with mounting bracket and gasket, switch on/off at 30/70 lux, with maximum LED load up to 1000W.



IP44 | 1 Year Warranty

Code	Construction Materials	Size (mm)
NPCHKIT	Thermoplastic	125 x 85 x 85

## Recessed PIR Sensor.

Recessed flush mounted white stand alone PIR sensor, 360 degree detection zone with 4 metre detection radius, adjustable lux level and time setting built in. Able to control incandescent loads up to 2000W and LED loads up to 250W.



IPX4 | 1 Year Warranty

Code	Cut Out (mm)	Wattage	Angle (°)	Construction Materials	Size (mm)
PIRFM360	63	250	360	Ploycarbonate	Ø 76 x 73

## Surface Mount PIR Sensor.

Surface mounted white stand alone PIR sensor, 360 degree detection zone with 4 metre detection radius, adjustable lux level and time setting built in. Able to control incandescent loads up to 1600W and LED loads up to 200W.



IP20 | 1 Year Warranty

Code	Version	Wattage	Angle (°)	Construction Materials	Ø x H (mm)
SA360PIR	White	200	360	Polycarbonate	110 x 35

## External Photoelectric Switch.

External Photoelectric Switch with Run Back Timer from 1-8 hours, able to control up to 250W of LED load. Switching level adjustable between approx. 5-300 lux. 10 Amp resistive, 3 Amp inductive load. Run back timer adjustable to stay on between 1-8 hours after switch on. Flexibility in operation for economic running costs.

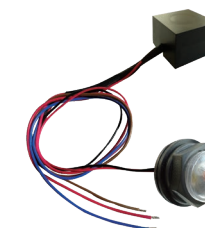


IP44 | 1 Year Warranty

Code	Wattage	Construction Materials	Size (mm)
RDT10A	250	ABS	110 x 70 x 38

## Remote Fixing Miniature Photocell.

Remote fixing miniature photocell can be used where space is extremely limited, controlling upto 500W of LED loads, switching on/off at 30/80 lux. The cable gland fixing around the photocell can maintain up to IP65 dependent on the enclosure.



IP20 | 1 Year Warranty

Code	Construction Materials	Size (mm)
EMPCR	Thermoplastic	Ø 30 x 24 (Photocell) 55 x 44 x 30 (Black Box)

## Microwave Sensor.

This sensor can either be wired directly into an existing fitting providing there is sufficient space to do so or alternatively it can be installed inside a separate unobtrusive enclosure, see Eterna part code MWCASE.



IP20 | 1 Year Warranty

Code	Version	Wattage	Construction Materials	Size (mm)
SENSORMW	On/Off Microwave	5	Polycarbonate	76 x 36 x 25

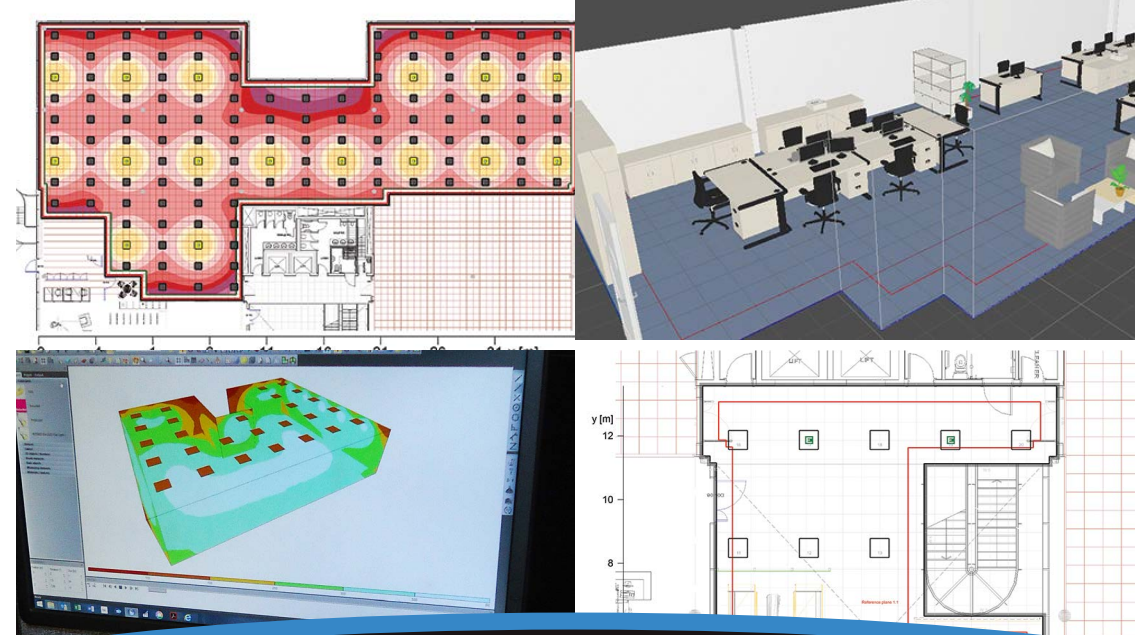
## Microwave Sensor Enclosure.

White polycarbonate IP65 enclosure for the SENSORMW, supplied with two mounting screws to install the sensor and have two 20mm gland entry holes for simple installation.



IP65 | 1 Year Warranty

Code	Version	Construction Materials	Ø x H (mm)
MWCASE	White	Polycarbonate	120 x 50



# Eterna's Free Lighting Design Service.

## From concept through to product specification

Our free lighting design service offers detailed insight and solutions for commercial, residential, industrial and emergency lighting projects.

Our team of dedicated lighting designers have years of industry experience and are up to date with any changes to the lighting standards, including BS EN 60598-1 and BS EN 60598-2-22.

Whether commercial, industrial or residential, we approach each and every project in the same way. It involves building a close relationship with the specifier to understand the rooms, their function and creating a plan that offers a plan of lighting solutions that meets compliance but helps to create spaces that create well-lit and comfortable spaces for everyone.

We also ensure that all spaces are safe and compliant with all emergency lighting level standards.

# Battery Replacement Service.

Code	Version	Compatible Models
EB1	Ni-Cd 3.6V 1500mAh Stick Battery	EMLED3M*, EMLED3NM*, EML3MISO, EML3NMISO
EB2	Ni-Cd 3.6V 2000mAh Stick Battery	BATL4FTEM3, BATL5FTEM3, BATL5HOEM3, BATL6FTEM3, BATL6HOEM3, ELEGAN5EM3, LDLEM3
EB3	Ni-Cd 3.6V 6Ah Side-by-side Battery	LEDTWNSPOT
EB4	Ni-Cd 3.6V 1500mAh Side-by-side Battery	EXIT3MLED
EB5	Ni-Cd 3.6V 4.5Ah Stick Battery	EBPM3, SEEBPM3
EB8	Ni-Cd 3.6V 800mAh Side-by-side Battery	EXITMMO, SESIGNLEM3, SIGNLEDEM3
EB11	Li-ion 3.2V 1500mAh Stick Battery	Carina, Chameleon, Chara and Fresh Prince ranges
EB13	Ni-Cd 3.6V 4000mAh Side-by-side Battery	VECOTWINSP
EB15	Ni-Cd 3.6V 2Ah 3-Linked Battery	SESMDLEM3
EB16	Ni-CAD 3.6V 4.5Ah Side by Side Battery	TSPOTLIP20
EB17	Li-Ion 3.2V 1500mAh Stick Battery	KEM3BULKLI, KEXIT3MLI, VECOEXIT3M, SEEXITLI
EB18	Li-Ion 3.2V 4500mAh Side-by-Side Battery	KTWINSPLI, SETSPOT
EB19	Li-Ion 3.2V 1500mAh Stick Battery	LDLEM3LI, SEMEM3, KEM3LIDL
EB20	Li-Ion 6.4V 1500mA Stick Battery	EBPM3LI, KWPEM3SIN5, KWPEM3SIN6, KWPEM3TWI5, KWPEM3TWI6
EB21	Ni-Cd 3.6V 800mAh Stick Battery	KEM3ML, VECOMEM3L
EB23	Li-Ion 3.2V 1000mAh Stick Battery	KEM3BULKLI, 110V Bulkhead (E14BH1)
EB24	Li-Ion 3.2V 1000mAh Stick Battery	SEMEM3
EB25	LiFePO4 3.2V 1000mAh Stick Battery	KEXIT3MLI, SEEXITLI, VECOEXIT3M
EB26	LiFePO4 6.4V 3300mAh Stick Battery	Ara (E07ARES)
EB27	LiFePO4 3.2V 1500mAh Stick Battery	EXITMMO*, SIGNLEDEM3*, SESIGNLEM3*
EB28	LiFePO4 3.2V 1500mAh Stick Battery	EMLED3M*, EMLED3NM*
EB29	LiFePO4 3.2V 1500mAh Stick Battery	EXIT3MLED*
EB30	LiFePO4 3.2V 2000mAh Stick Battery	LDLEM3*
EB31	LiFePO4 3.2V 3000mAh Stick Battery	SESMDLEM3*
EB32	LiFePO4 3.2V 5500mAh Stick Battery	Vorto (E01VT65EM)*
EB33	LiFePO4 6.4V 1500mAh side-by-side Battery	Amplus, Foris, Verus ranges
EB34	LiFePO4 3.2V 1500mAh side-by-side Battery	PlugPack Emergency Pack (E02U01ES)
EB35	LiFePO4 3.2V 1500mAh Stick Battery (3 wires)	EXITMMO*, SIGNLEDEM3*, SESIGNLEM3*
EB36	LiFePO4 3.2V 1500mAh Stick Battery (3 wires)	EMLED3M*, EMLED3NM*
EB37	LiFePO4 3.2V 1500mAh Stick Battery (3 wires)	EXIT3MLED*
EB38	LiFePO4 3.2V 3000mAh Stick Battery (3 wires)	SESMDLEM3*
EB39	LiFePO4 3.2V 5500mAh Stick Battery (3 wires)	Vorto (E01VT65EM)*
EB40	LiFePO4 3.2V 2000mAh side-by-side Battery	E02U02ES
EB41	LiFePO4 3.2V 1000mAh stick battery	E01SWI, E01SBI, E01REI
EB42	LiFePO4 3.2V 3200mAh battery	110V Twinspot (E14TW1)

\*Depending on your batch version, your product may be compatible with a different battery. Please contact our team for guidance.



## IMPORTANT OPERATIONAL CHECKS TO KEEP YOUR FITTING WORKING.

Periodic testing should be carried out to ensure emergency lighting is operating correctly. For the period of the test, isolate the power supply by operation of a key switch, or other isolation device. At the end of the test, power should be restored and all indicator lamps checked.

**DAILY:** Visual inspection of the battery charge LED.

**EACH MONTH:** Isolate the power supply for a period sufficient to ensure that each lamp is illuminated. Endorse the test record form supplied.

**ONCE EACH YEAR:** Isolate the power supply and check that the light is still illuminated after 3 hours. Endorse the test record form.

### Battery Replacement.

If after routine operation check, the lamp does not remain lit for the three hour period, a new battery pack may be required.

**Switch off the electricity at the mains, both switched and permanent supply.**

**Allow batteries to fully discharge then reconnect to supply and allow to charge for 24 hours.**

**Test again for 3 hours, if light does not remain lit change the battery pack.**

**Check install guides for procedure on changing the battery.**

# Terms & Conditions.

Eterna Lighting Limited Standard Terms & Conditions of Sale

## GENERAL

In these conditions references to "the Company" are to Eterna Lighting Limited and references to the "Purchaser" are to any person or corporation with whom the Company enters into any contract whether directly or indirectly. All quotations or tenders given and all orders received and accepted are executed on the basis that the Purchaser is bound by these conditions of sale. Where there is any inconsistency between these conditions of sale and any conditions or other terms which the Purchaser seeks to impose, these conditions of sale shall prevail. These conditions supersede any other terms appearing elsewhere and exclude and override any other terms or representations stipulated or incorporated or referred to by the Company whether in the order or in any negotiations or course of dealings established between the Company and the Purchaser. No amendment or variation of these conditions will apply unless confirmed in writing by a director of the Company.

## VALIDITY OF QUOTATION

The Company may on the Purchaser's request provide a written quotation. Unless otherwise agreed in writing, any quotation given is not for a fixed period and the Company reserves the right to adjust any prices quoted to reflect subsequent variations in cost.

## DESCRIPTIVE MATTER AND ILLUSTRATIONS

All descriptive and forwarding specifications, drawing and particulars of weight and dimensions issued by the Company are approximate only, and are intended only to present a general idea of the goods to which they refer and shall not form part of the contract.

## SAMPLE

Any sample submitted with the Company's quotation or at the Purchaser's request must be returned within 30 days of receipt and the Purchaser may be charged if not so returned. Notwithstanding that a sample of the goods may have been exhibited to and inspected by the Purchaser, it is hereby agreed that such sample was so exhibited and inspected solely to enable the Purchaser to judge for himself the quality of the bulk and not so as to constitute a sale by sample. The Purchaser shall take the goods at his own risk as to corresponding with the said sample or as to their quality, condition or sufficiency for any purpose.

## PRICES

Unless otherwise agreed in writing, all orders are accepted subject to prices and any relevant discounts applying at the date of delivery and any price list of the Company whether published or not shall not affect the right of the Company to charge for goods in accordance with this clause. All prices are exclusive of Value Added Tax duties and levies which shall be payable by the Purchaser at the applicable rate.

## MINIMUM ORDER VALUE AND CARRIAGE CHARGES

The Company reserves the right to levy a handling charge on any orders the total invoice price of which (excluding VAT) is less than the current minimum order value of £150.00 or any such value as may be notified to the Purchaser from time to time.

Unless otherwise specified, the prices quoted for all orders exceeding the minimum order value (excluding VAT) are inclusive of the costs of carriage provided delivery is to be effected within mainland United Kingdom. The Company reserves the right to choose the mode of transport and to charge for deliveries outside mainland United Kingdom, such charges to be for the account of the Purchaser.

## PAYMENTS

Until such time as the company has confirmed credit account facilities in writing, payment is due in full on or before delivery. The Company may at its discretion establish a credit account for the Purchaser. If such an account is established, unless agreed otherwise in writing, payment is due in full within 30 days from the end of the month in which the invoice is dated. The Company may, without prejudice to its other rights, charge interest on overdue accounts at the rate of 4% over the base rate of The Bank of England from time to time to be compounded monthly from due date until payment in full is made both before and after judgement. The Company may also suspend deliveries without notice, of any or all of the Purchaser's orders or cancel any outstanding orders if any payment from the Purchaser becomes overdue (or upon insolvency or bankruptcy of the Purchaser, and further where (i) a petition is presented for the winding up of either party to the contract, (ii) it has an administrator or liquidator appointed, or (iii) either party makes an arrangement with its creditors) without incurring any costs or other liability as a result of such cancellation. Any portion of an account that becomes overdue will render the whole account overdue. Where the contract provides for separate instalments, deliveries or parts, payment for each instalment, delivery or part shall be made as if the same constituted a separate contract. The Company shall have the right to invoice the Purchaser for a partial delivery of the goods.

## NO CANCELLATION

For the avoidance of doubt:

There can be no cancellation or return of goods by the Purchaser without the Company's written consent. If the Purchaser cancels its order, the Company shall be entitled to recover any loss sustained thereby from it. The Purchaser will indemnify the Company in respect of any third party claims arising against the Company by virtue of any act or omission arising out of the Company's repudiation of the contract or suspension or cancellation of deliveries under this clause.

## PROPERTY

Title to the goods shall remain the property of the Company until the Company has received all payments which are owing to it by the Purchaser under any account whatsoever. While the goods are the property of the Company, the Purchaser shall hold them as bailee on behalf of the Company and shall keep the goods safe, insured, separate and identifiable from all other goods in its possession. If the Purchaser sells the goods before payment in full has been made and if the Company so requires, the Purchaser shall hand over to the Company all claims for payment against any sub-purchaser.

So long as the property in any goods remains in the Company, the Company shall have the right, without prejudice to the obligation of the Purchaser to make payment in full of any sums outstanding on any account, to take re-possession of the goods and for that purpose the Purchaser hereby irrevocably authorises the Company to recover the goods and to go upon any premises of the Purchaser for that purpose. The Company may maintain an action for the price of the goods notwithstanding that property in the goods may not have passed to the Purchaser.

## LOSS OR DAMAGE IN TRANSIT

The Company will not be liable for any loss or damage or shortage during delivery or non delivery unless the Purchaser shall notify the Company in writing within three working days in the event of loss, damage or shortage or within four days of the date of invoice if the goods are not received.

## WEEE COMPLIANCE

The Company places various types of Electrical and Electronic Equipment (EEE) on the market in the UK. EEE is subject to waste regulation under the Waste Electrical and Electronic Equipment Regulations 2006 (as amended) and should be disposed of responsibly and prioritised for re-use and/or recycling when it becomes waste (WEEE). Purchasers may dispose of their WEEE free of charge locally at Designated Collection Facilities (DCFs). Details of your local DCF can be found at: [www.recyclenow.com](http://www.recyclenow.com). The Company is obliged to take back, free of charge and within a reasonable time, WEEE from a Purchaser on a like-for-like basis for treatment and recycling. The Company is required to do this in any calendar year in which new EEE has been purchased by the Purchaser. In certain circumstances, this may include WEEE not originally supplied by the Company. If any Purchaser requires the Company to take back any WEEE, they should write to the Operations Director, Eterna Lighting Ltd, Huxley Close, Park Farm, Wellingborough NN8 6AB, who will then advise on the necessary arrangements for the receipt, proper treatment, and recycling of the WEEE.

## BATTERY COMPLIANCE

Within certain products the Company places lead acid, lithium ion, nickel cadmium & nickel metal hydride batteries on the market. Industrial batteries are subject to waste regulation under the Waste Batteries and Accumulators Regulations 2009 and should be disposed of responsibly. Purchasers may be able to dispose of their waste industrial batteries locally via legitimate licensed trade waste contractors. The Company is obliged to take back, free of charge and within a reasonable time, waste industrial batteries of the same chemistry supplied to a Purchaser, for treatment and recycling and is required to do this in any calendar year new industrial batteries are placed on the market. In certain circumstances, this may include batteries not originally supplied by the Company. If any Purchaser requires the Company to take back industrial batteries, they should write to the Operations Director, Eterna Lighting Ltd, Huxley Close, Park Farm, Wellingborough NN8 6AB, who will then advise on the necessary arrangements for the receipt, proper treatment and recycling of, the waste industrial batteries.

## DELIVERY

Any times quoted for despatch, repair or replacement are to be treated as estimates only and time shall not be deemed to be of the essence of any contract between the Purchaser and the Company. The Company shall not be liable for any loss whatsoever arising as a result of any delay. Delivery shall occur on despatch or collection of the goods from the Company's premises by carrier whether or not the carrier is the Company's agent or servant. Unless otherwise agreed in writing the Company shall deliver the goods to the address specified in the Purchaser's order. Risk in the goods shall pass to the Purchaser on delivery or collection.

Insofar as there is any delay in delivery which is attributable to the Purchaser, the Company may charge the Purchaser such additional transportation costs, storage charges and handling charges which may arise as a result of the Purchaser's failure to take delivery on the due date.

Save as expressly provided in these conditions, all terms, conditions, representations and warranties (whether express or implied) relating to the sale of goods are excluded and the goods are not sold by description or sample.

## WARRANTY AND EXCLUSION

The Company will use its reasonable endeavours to assign the benefit of any warranty it receives from its supplier to the Purchaser but shall not be liable for any claim or claims for any damages whether direct, indirect special or consequential or economic damage or loss (including loss of profit or goodwill) arising from any breach by its contract or any defect in the goods. In certain circumstances and for certain product ranges, the Company may offer a specific warranty against defects arising from faulty design or materials, for a defined period. Any warranty period offered will be deemed to have commenced on the date the goods have been delivered to the Purchaser. The Company will not be liable for any warranty or guarantee where the Purchaser has not paid for the goods in full by the due date.

Nothing in these conditions shall exclude liability of the Company for death or personal injury resulting from its negligence insofar as the same is prohibited by United Kingdom statute.

## FORCE MAJEURE

The Company shall not be liable for delay in performing or for failure to perform its obligation if the delay or failure results from any of the following, Act of God, outbreak of hostilities, war, riot, civil disturbance, acts of terrorism, government order, direction of legislation, fire, explosion, flood, bad weather, accident, strike or other industrial action, lock-out, failure of telecommunication lines, failure or breakdown of plant machinery or vehicles, transport delays, default of suppliers, or any other occurrence over which the Company has no control.

## LEGAL CONSTRUCTIONS

These conditions and any contract following thereon shall be governed by and construed in accordance with English Law and the Purchaser submits to the jurisdiction of the High Court of England but the Company may enforce the contract in any Court of competent jurisdiction

# Terms & Conditions.

Eterna Lighting Ireland Standard Terms & Conditions of Sale

## SCOPE

These terms and conditions apply to all offers made by O'Neills Electrical Ltd, trading as Eterna Lighting Ireland (hereinafter called the company) and to all contracts of sale made by the company for its products. These terms and conditions shall not be modified unless with the prior written approval of a director of the company. These terms and conditions shall prevail over any and all of the buyer's general and specific terms and conditions of purchase for the products and shall supersede all previous communications with the buyer either oral or written.

## COMING INTO EFFECT

The contract between the company and the buyer shall come into effect when the buyer's order is accepted by the company.

## STATUTORY RIGHTS

The provisions of these general conditions of sale shall not prejudice any rights which may, notwithstanding these conditions of sale, be guaranteed to the customer by virtue of sections 12, 13, 14 and 15 of the sale of goods act 1893, as amended by the sale of goods and supply of services act 1980, save to such extent as may be lawful from time to time in relation to any particular sale.

## ORDERS

Orders will be made up to the nearest full pack quantity. Written confirmation of telephoned orders should be clearly marked as such, otherwise we cannot be held responsible should the order be duplicated. The right is reserved to refuse cancellation of any order placed or to suspend delivery of any order from time to time if any account is in arrears.

## PRICES

Unless otherwise agreed in writing all orders are executed subject to prices and any relevant discounts ruling at the date of delivery and any other price list of the company whether published or not shall apply. All prices are subject to Value Added Tax or any similar tax on duty of goods. Attention is drawn to the fact that listed prices and conditions are subject to alteration without prior notice.

## QUOTATIONS

All quotations relating to price or discount and whether given verbally or in writing are valid for thirty days only. Quotations must in all cases, be authorised by a director of the company.

## MINIMUM ORDER VALUE

The company reserves the right to levy a small order surcharge on all orders below €150/£150 nett trade. This charge will be in addition to any carriage charges.

## DELIVERY

The company will endeavour to execute orders as soon as possible but delivery dates either quoted or agreed are not of the essence of the contract, nor can the company guarantee them. The company are not responsible for any loss expense or damage sustained by the buyer of any sort caused by any delay in delivery. The buyer must accept delivery of the goods when offered by the company at the site specified in the despatch invoice. Any additional costs or charges arising from delivery to any other site requested by the buyer shall be paid for by the buyer. Upon delivery of the goods to the site the buyer shall be deemed to be fully responsible for them and will immediately affect proper and adequate insurance. In the event of any loss or damage to the goods however arising before the buyer has paid the full price thereof the buyer shall compensate the company for such loss and/or damage.

## INSPECTION OF GOODS DELIVERED

The buyer is responsible for checking that goods of the correct specification and/or description are delivered and while the company will replace any incorrect goods delivered provided they are notified thereof within a reasonable period the company are not liable for loss or damage howsoever caused arising from the use of such goods even if their delivery arises from negligence of the company, their servants or agents.

## DAMAGE OR LOSS IN TRANSIT

In the event of damage or shortage, written or faxed notification must be sent to the company within two working days as well as making a notation to that effect on the signed delivery note. In the event of non-delivery the company must be notified in writing within seven days of the despatch date shown on the relevant invoice. In the event of failure to give notice within the aforementioned periods the goods will be deemed to be in all respects as invoiced.

## CARRIAGE

Unless otherwise specified the price excludes delivery charges from the company's warehouse to the buyers premises. The company reserves the right to choose the method of transport and may impose a carriage charge in exceptional circumstances. Requests for rail, courier or postal delivery will be at the buyers cost. When special items are ordered and the manufacturer charges carriage and/or packing, the company reserves the right to pass these charges on at cost.

## CREDITS – TIME LIMITATION

Under no circumstances will the company consider claims for credit – of whatever nature- after the expiry of six months from the date of sale with the exception of products where specific periods of guarantee apply.

## RETURNS

The company will not accept for credit goods correctly supplied in accordance with order, without written approval. If consent is given, this will be subject to (a) a handling charge being imposed (b) returned goods must be sent carriage free (c) reference made to the original invoice on which the goods were supplied (d) a clear signature must be obtained from the company confirming receipt of goods and (e) the company will not replace goods claimed to be defective until it is confirmed the fault is not the result of improper use or installation.

## SAMPLES

Any samples submitted with the company's quotation or at the buyer's request must be returned within thirty days of receipt and may be charged if not so returned.

## PAYMENTS

(a) Until such time as the company has confirmed credit account facilities in writing, payment shall be due in full on or before delivery, and the company may withhold delivery accordingly.

(b) A settlement discount of 2.5% is allowed for payment made by the last day of the month following delivery except on Value Added Tax or on such items marked on the company's quotation, acceptance of order, or invoice as being 'Strictly Nett'

(c) The company shall be entitled to charge interest on overdue accounts of 2.5% per month and to suspend deliveries without notice of any of the buyers orders or to cancel such orders if the buyer does on three or more occasions fail to pay due accounts without any reason of withholding payment or if the buyer being a company has a receiver appointed or goes into liquidation or being an individual commits to an act of bankruptcy or has a receiving order made against him.

- (d) Where the contract provides for separate instalments, deliveries or parts, payment for each instalment, delivery or part shall be made as if the same constituted a separate contract.
- (e) No account shall exceed sixty days credit.
- (f) Overdue accounts and those not qualifying for settlement discount are strictly nett.
- (g) Receipts are not issued against payments by cheque unless specifically requested.
- (h) The company reserves the right to suspend supplies on a temporary or permanent basis and the discretion to determine any contract if the buyer is found to be in breach of its payment terms.
- (i) The company reserves the right at any time in its absolute discretion to revoke or vary any credit extended to the customer including the credit period referred to above.

**TITLE**

- (a) The property in such goods supplied by the company subject to these terms and conditions shall remain in the company and shall not pass to the buyer until all monies inclusive of delivery and other charges due or owing to the company by the buyer in consideration of such goods, have been paid and all other obligations due by the buyer have been performed notwithstanding that the goods have been delivered to the buyer.
- (b) The buyer is entitled to sell the goods to third parties in the ordinary course of business on the condition that if the company so requires the buyer so long as he has not fully discharged his debt to the company shall deal separately as trustee for the company with the proceeds of such sale and shall account to the company for such monies as directed by it from time to time.
- (c) It is a condition that goods supplied by the company are sold to third parties on a first in first out basis and that stocks of the company's products held at any time by the buyer relate to the most recent invoices so that all stocks of the company's products held are identified and are related to specific invoices.
- (d) The buyer hereby empowers and authorises the company to demand and receive payment from third parties for any of the company's goods sold to such third parties whilst the buyer is in default of payment to the company, which power will not be exercised by the company without written notice to the buyer.
- (e) Should the goods (or any of them) be converted into a new product, whether or not such conversion involves the admixture of any other goods or thing whatsoever and in whatever proportions, the conversion shall be deemed to have been effected on the company's behalf and the company shall have full legal and beneficial ownership of the new product.
- (f) If any amount owing by the buyer to the company is overdue, the company may, without prejudice to any of its other rights or remedies, repossess and resell any or all such goods and may enter upon the buyer's premises for that purpose.
- (g) The buyer shall not be entitled to pledge or create any lien or charge over the goods but, subject as aforesaid, may deal with the goods in the ordinary course of trade.
- (h) The clauses herein relating to retention of title shall not be construed as to constitute an agency between the company and the buyer in any circumstances.
- (i) The clauses herein relating to retention of title do not entitle the buyer to return goods and refuse or delay payment on the grounds that the property in such goods has not passed to the buyer.
- (j) If the reservation of ownership in the foregoing clauses is not effective for any reason whatsoever, the purchaser hereby undertakes to co-operate with the company in establishing a similar security in favour of the company.

**WARRANTY AND EXCLUSION**

The Company will use all reasonable endeavour to assign the benefit of any warranty it receives from its supplier to the Purchaser but shall not be liable for any claim or claims for any damages whether direct, indirect special or consequential or economic damage or loss (including loss of profit or goodwill) arising from any breach by its contract or any defect in the goods. In certain circumstances and for certain product ranges, the Company may offer a specific warranty against defects arising from faulty design or materials, for a defined period. Any warranty period offered will be deemed to have commenced on the date the goods have been delivered to the Purchaser. The Company will not be liable for any warranty or guarantee where the Purchaser has not paid for the goods in full by the due date. Nothing in these conditions shall exclude liability of the Company for death or personal injury resulting from its negligence insofar as the same is prohibited by Irish statute.

**DESCRIPTIVE MATTER AND ILLUSTRATION**

All descriptive and forwarding specifications, drawings and particulars of weights and dimensions issued by the company are approximate only, and are intended only to present a general indication of appearance of the goods to which they refer and shall not form part of the contract. The company reserve the right to alter or vary with or without notice.

**COPYRIGHT**

All drawings, descriptions and other information submitted by the company shall remain the property of the company together, with the copyright therein.

**DESIGN IMPROVEMENT**

As the company constantly looks to improving and modernising products, the company reserves the right to supply goods incorporating modifications in the design, when these are deemed by the company to be an improvement.

**FORCE MAJEURE**

Every effort will be made to carry out the contract but its due performance is subject to cancellation by the company or to such variation as it may find necessary as a result of inability to secure labour materials or supplies as a result of any act of god, war, strike, lockout or other labour dispute, fire, flood, drought, legislation or other (whether of the foregoing class or not) beyond its control.

**LEGAL CONSTRUCTION**

The terms of any contract to which these conditions of sale relate shall, in all respects be constructed and operate in accordance with the laws of the Republic of Ireland and be within the exclusive jurisdiction of the Irish courts.



## Lighting Design.

[eterna-lighting.co.uk/lighting-design-schemes](http://eterna-lighting.co.uk/lighting-design-schemes)

## New Products.

[eterna-lighting.co.uk/new-products](http://eterna-lighting.co.uk/new-products)

## Marketing.

Point of sale, digital artwork and event support

## Battery Replacement Service.

[eterna-lighting.co.uk/battery-replacement-service](http://eterna-lighting.co.uk/battery-replacement-service)

# eterna.

[eterna-lighting.co.uk](http://eterna-lighting.co.uk)  
UK: [enquiries@eterna-lighting.co.uk](mailto:enquiries@eterna-lighting.co.uk) | 01933 673144  
IE: [sales@eterna-lighting.ie](mailto:sales@eterna-lighting.ie) | +353 1 844 6300

Eterna Lighting Ltd, Huxley Close, Wellingborough, Northants NN8 6AB  
Registered in England No. 410716 | VAT REG: No. GB 229 3783 37

O'Neills Electrical Ltd trading as Eterna Ireland, Unit B4D, Airport Business Park, Cloghran, Co. Dublin, K67 X7H  
Co. Reg. No. IE 018423 | WEEE Reg. No. 00093WB | VAT Reg. No. IE 8R73602D

